

# KITCHEN COMPACT

A STORIED HISTORY  
WITH AN EVEN BRIGHTER FUTURE

SINCE 1937

NATIONWIDE FAMILY-OWNED MANUFACTURER  
OF KITCHEN & BATH CABINETRY



Made in USA

# DWhite

BY KITCHEN KOMPACT



Our recessed panel, Shaker style cabinets are available in painted white. This painted wood door style enables a variety of design options with countertops, flooring and decorative backsplashes. Door pulls not included.

**Please refer to the List Price and Specification Booklet (page 11) for Wood Characteristics and Painted Finishes. For more information, see the warranty section at [kitchencompact.com/warranty](http://kitchencompact.com/warranty).**

Watch the DWhite touch-up kit video at [kitchencompact.com/dwkit](http://kitchencompact.com/dwkit).



**Loyalty** @kitchencompact

Our employees average 15 years of service!



[kitchencompact.com](http://kitchencompact.com)



# GLENWOOD



For those who want a darker, chocolate color and up-to-date Shaker style, choose our best selling line, **Glenwood**. The clean, well-defined edges and **recessed panel** doors bring a touch of elegance to your home. Door pulls not included.



**Location** @kitchencompact

We are located in Jeffersonville, Indiana, across the Ohio River from Louisville, Kentucky.



[kitchencompact.com](http://kitchencompact.com)



# WARMWOOD



Not as dark as Glenwood, **Warmwood's** chestnut brownish tone, clean lines, and **recessed panel** doors give you another choice in our most popular Shaker style. Door pulls not included.



**American-Made** @kitchencompact

Our cabinets are proudly made in the USA!



[kitchencompact.com](http://kitchencompact.com)



# CHADWOOD



A traditional classic with a golden oak finish, **Chadwood** is right at home in any kitchen. With its *oak recessed panel* doors, **Chadwood** can be designed and accessorized to fit any need, taste or budget. Door pulls not included.



**Family** @kitchencompact

Founded by Dwight Gahm, we are now joined by a third generation!



[kitchencompact.com](http://kitchencompact.com)

# The Enduring Beauty of Wood



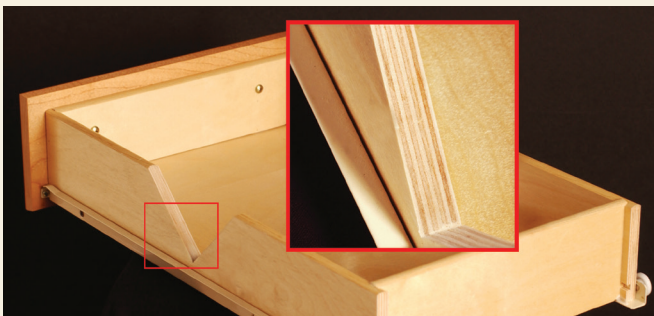
There's solid wood durability built into every KK cabinet. From the hardwood doors and stiles to the solid wood elements, each cabinet is built to last.

Note these quality features:

- All frames are built of solid 3/4" hardwoods. Each rail is kiln-dried, joined by mortise and tenon, and then glued for added strength.
- Solid wood toe kicks, 3/4" thick.
- Solid wood hanging strips on wall and base cabinets, located at the top and bottom.
- End panels consist of 3-ply construction, 1/2" thick engineered wood core with hardwood veneers.

All painted and stained cabinets are protected with a durable topcoat. The result is a surface that is virtually "family-proof," resisting many household chemicals, water, alcoholic beverages, mild acids, and even nail polish.

The result is more than just a kitchen you can cook in—it's a kitchen you can live in at a price you can live with.



And there's more. All Kitchen Kompact cabinets feature plywood drawers as a standard. A front-to-back epoxy-coated drawer system is securely attached to a solid wood strip in the back of the cabinet for stability, and years of smooth operation. We also offer universal design cabinets.

*Kitchen Kompact, Inc. reserves the right to change design, specifications or materials without being obliged to incorporate such changes in products of prior manufacture. The artwork and specifications contained herein are the property of Kitchen Kompact, Inc. and may not be copied or reproduced without the written consent of the company.*

*A physical sample must be viewed for actual color of cabinetry.*

## Custom Touches

These accessories, available for KK cabinets, give any kitchen a custom look. Ask your dealer for details.

**pantry roll-out trays**



**base roll-out trays**



**Accessory Match stem glass holder**



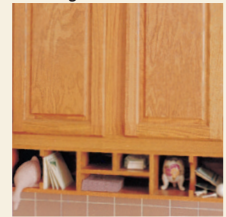
**crown moulding**



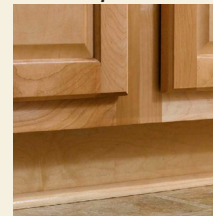
**Accessory Match lattice wine rack**



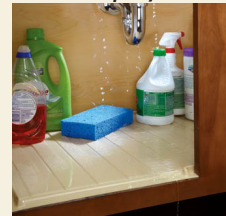
**Accessory Match desk organizer**



**toe kick & quarter round**



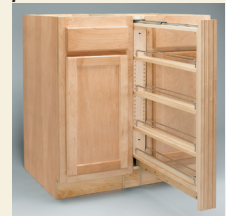
**Rev-A-Shelf undersink drip tray**



**Rev-A-Shelf half moon shelf**



**Rev-A-Shelf pull-out filler**

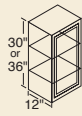


**For more photos and information, visit us online!**

**accessorymatch.com**  
(260) 495-2501

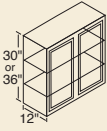
**rev-a-shelf.com**  
(800) 626-1126

**WALL Cabinets**



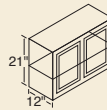
**36" High**

- 9WT 27WT
- 12WT\* 30WT
- 15WT\* 33WT
- 18WT\* 36WT
- 21WT\* 42W
- 24WT\*



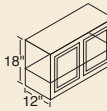
**30" High**

- 9W\* 27W
- 12W\* 30W
- 15W\* 33W
- 18W\* 36W
- 21W\* 42W
- 24W\* 48W



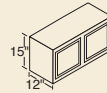
**21" High**

- 24R\* 36R
- 30R



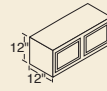
**18" High**

- 24Y\* 36Y
- 30Y



**15" High**

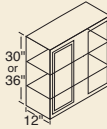
- 30X 36X
- 33X



**12" High**

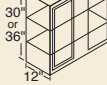
- 30X12
- 36X12

**WALL CORNER Cabinets**



**36" High**

- 24WCT\* 36WCT\*

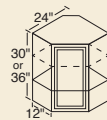


**30" High**

- 24WC\* 42WC
- 36WC\*

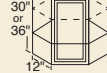
All can be pulled 4-1/2".

**ANGLE WALL Cabinets**



**36" High**

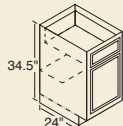
- 24AT



**30" High**

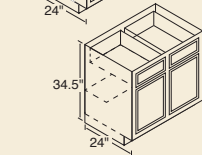
- 24A

**BASE Cabinets**

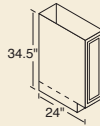


- 12B\* 30B
- 15B\* 33B<sup>†</sup>
- 18B\* 36B
- 21B\* 42B
- 24B\* 48B
- 27B\*<sup>†</sup>

<sup>†</sup> 3" side stiles.

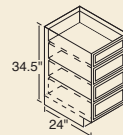


**TRAY Cabinet**



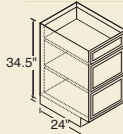
9T

**DRAWER Cabinets**



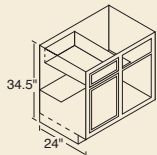
- 15D 24D
- 18D

4 Drawer Stack  
Glenwood,  
Warmwood,  
Chadwood

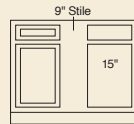


3 Drawer Stack  
DWhite ONLY

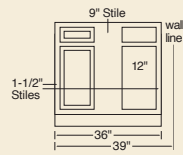
**BASE CORNER Cabinets**



- 39BC
- 42BC

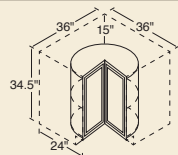


42BC  
Can be pulled to 49".



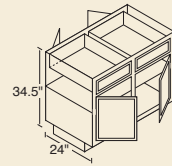
39BC  
Must be pulled 3".  
Can be pulled to 46".

**LAZY SUSAN CORNER Cabinet**



36LS  
Shipped without  
finished ends.

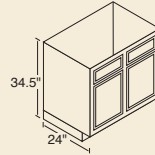
**PENINSULA BASE Cabinets**



- 36B-P
- 48B-P
- 48BC-P

**BC-P** indicates Blind  
Corner Peninsula.

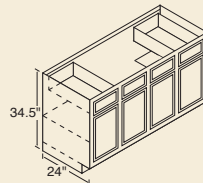
**RANGE & SINK BASE Cabinets**



- 30RBS 36RBS
- 33RBS<sup>†</sup> 42RBS

<sup>†</sup> 3" side stiles.

**SINK BASE Cabinets**



60SB

No shelf under sink –  
no back.

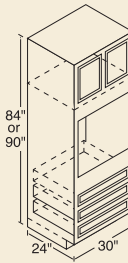
**SINK FRONTS**



18SF<sup>†</sup>

<sup>†</sup> Square edge.

**OVEN Cabinets**



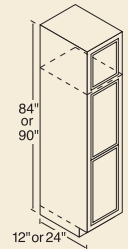
**90" High**

300T

**84" High**

300U

**BROOM Cabinets**



**90" High**

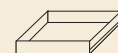
- 18BRWT (12" deep)
- 18BRBT (24" deep)
- 24BRBT (24" deep)

**84" High**

- 18BRW (12" deep)
- 18BRB (24" deep)
- 24BRB (24" deep)

No shelves included  
with broom cabinets.  
**Optional Shelf Kit**  
available.

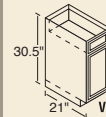
**ACCESSORIES**



Pantry/Base  
Roll-Out Tray  
15BT 18BT 24BT

**VANITY Cabinets**

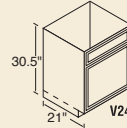
**30.5" Standard**



V12B

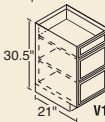
- V12B V36S
- V15D V36SD
- V24S V42S<sup>†</sup>
- V30S V48S<sup>†</sup>

<sup>†</sup>Two outside working  
drawers.

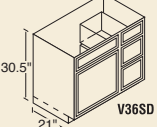


V24S

3 Drawer  
Stack  
DWhite  
ONLY

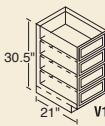


V15D

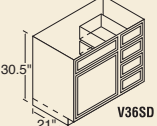


V36SD

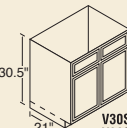
4 Drawer  
Stack  
Glenwood,  
Warmwood,  
Chadwood



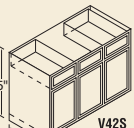
V15D



V36SD



V30S



V42S

**VANITY Cabinets**

**34.5" Tall**

Tall vanities are only  
available for Glenwood,  
Warmwood, and DWhite.

- V12BT V36SDT
- V15DT V42ST<sup>†</sup>
- V24ST V48ST<sup>†</sup>
- V30ST
- V36ST

All Standard  
and Tall Vanities  
21" Deep

<sup>†</sup>Two outside working  
drawers.

**ADA ACCESSIBLE Cabinets**

ADA accessible cabinets are available, on  
special order, in a limited number of sizes.

**Cabinet Code Descriptions**

For ease of ordering, the numerical designation  
indicates the cabinet width, the letter identifies  
the height.

<sup>†</sup>Single door.



Kitchen Kompact, Inc.  
911 East 11th St. (47130)  
P.O. Box 868  
Jeffersonville, IN 47131-0868  
(812) 282-6681 Phone  
(812) 282-7880 Fax

[kitchenkompact.com](http://kitchenkompact.com)



Kitchen Kompact is certified under  
the Kitchen Cabinet Manufacturers  
Association's Environmental  
Stewardship Program™.

<sup>™</sup> This certification has been recognized by the  
National Association of Home Builders (NAHB)  
with the Green Building Award for Advocate of the Year  
for its environmental and sustainability achievements.



Kitchen Kompact, Inc.  
911 East 11th St. (47130)  
P.O. Box 868  
Jeffersonville, IN 47131-0868  
(812) 282-6681 Phone  
(812) 282-7880 Fax

[kitchenkompact.com](http://kitchenkompact.com)



Kitchen Kompact is certified under the Kitchen Cabinet Manufacturers Association's Environmental Stewardship Program\*\*.

\*\* This certification has been recognized by the National Association of Home Builders' (NAHB) with the Green Building Award for Advocate of the Year for its environmental and sustainability achievements.