

Würth Baer Supply

SAFETY SIGNAGE SOLUTIONS

Directional Signage • PPE Dispensers • Work Kits

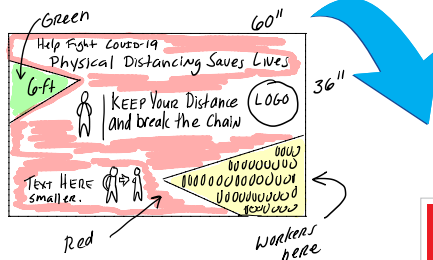


GO BEYOND STANDARD... CUSTOMIZE IT!

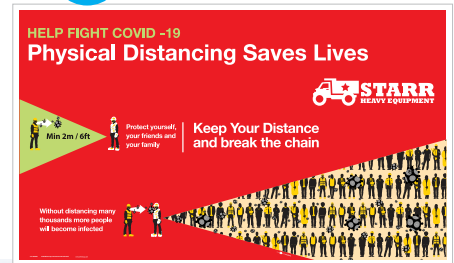
Whatever your regulations or standards, design products that meet **YOUR** needs, free of charge. Choose from a range of quality materials sourced in the U.S.A., protected with our one of a kind Sign Muscle® coating to make it last.

- **No charge for artwork**
- **2 Day turnaround time**
- **Made in the U.S.A.**
- **No minimums**
- **Free Sign Muscle® protective coating**

1 FROM IDEA



2 TO PROOF



3 TO REALITY



A-Frame Signs & Stands

Signage for Outdoor Use

NMC's Deluxe A-Frame Sidewalk & Parking lot signs are ideal for directing pedestrian and motorized traffic.

- Stand Measures 45" x 25"
- Sign Measures 36" x 24"
- Includes one sign
- Double-sided (stand can hold two signs, one on each side) –additional signs sold separately
- High-density impact plastic
- Sign made of corrugated plastic (sign is removable)
- No tools, tape or screws needed –simply fold-out and go
- Custom messages available



Sign & Stand: PESFS114C-KIT
Sign Only: PESFS114C



Sign & Stand: PESFS115C-KIT
Sign Only: PESFS115C



Sign & Stand: PESFS116C-KIT
Sign Only: PESFS116C



Sign & Stand: PESFS110C-KIT
Sign Only: PESFS110C



Sign & Stand: PESFS111C-KIT
Sign Only: PESFS111C



Sign & Stand: PESFS112C-KIT
Sign Only: PESFS112C



Sign & Stand: PESFS113C-KIT
Sign Only: PESFS113C

Double Sided, Reversible Floor Signs

Material

19 x 12 Corrugated Polyethylene



PEFS42



PEFS43



PEFS44



PEFS45



PEFS46



PEFS47



PEFS48



PEFS49

Cones & Cone Top Signs

10.375 x 12.625
Material
Rigid Plastic



PECS29



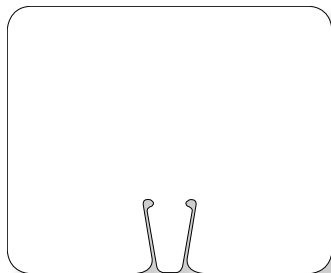
PECS30



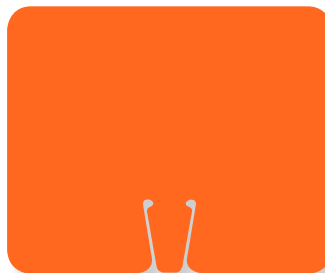
PECS31



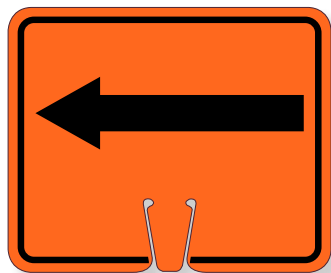
PECS15



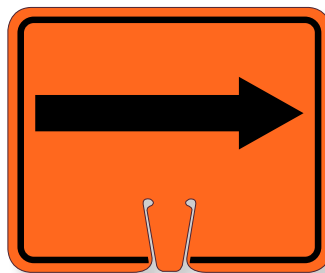
PECS2



PECS1



PECS4



PECS5



PECS8



PECS9



PETPC2

Description

Orange, 18 x 10.5. 1/case



PETFS304

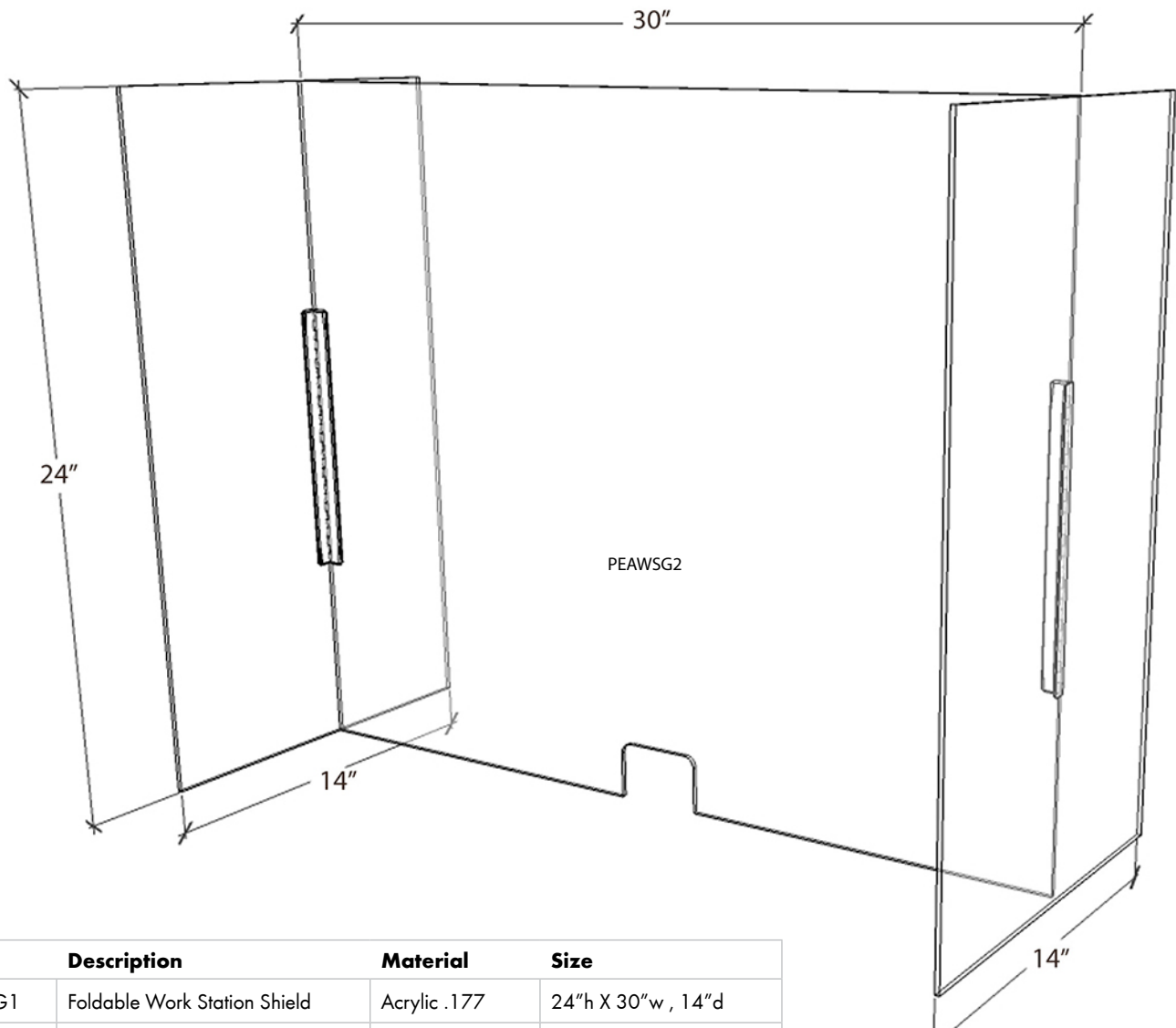
Description

Tri-View, 40 x 15, 3/case

Work Station Guards

Open office concepts present unique challenges as employers and employees are sensitive to controlling the spread of communicable diseases. Work Station Guards provide a stop-gap solution. Place guards to help keep workers healthy and prevent the spread of viruses.

- Made of acrylic
- Easy to clean
- Portable/storable
- Sturdy 3-sided hinge design
- Fully customizable



Item #	Description	Material	Size
PEAWSG1	Foldable Work Station Shield	Acrylic .177	24"h X 30"w , 14"d
PEAWSG2	Foldable Work Station Shield	Acrylic .177	24"h X 30"w , 22"d

Acrylic PPE Dispensers

Workers need to use personal safety protection everyday, and they need easy access to PPE on site with convenient dispensers.

- Widest selection of standard dispensers
- Superior acrylic quality
- Convenient and economical
- American made
- Hassle-free ordering with FAST shipping
- No Minimums



Glove Dispenser

Comes in 3 sizes to accommodate any range of needs.

- 15 x 10.75 holds 3 boxes of gloves
- 10 x 10.75 holds 2 boxes of gloves
- 5 x 10.75 holds 1 box of gloves
- Table or wall mount

Item #	Size
PEAGBT	15 x 10.75
PEAGBD	10 x 10.75
PEAGBS	5 x 10.75



PEAGBT

Visitor Spec Dispenser

- Features bottom door to keep glasses in place
 - Dimensions: 18 x 8 x 4
 - Holds up to approx. 20 pair
 - Table or wall mount
- Item #: PEASG-D



Miscellaneous PPE Dispenser

Store a wide range of PPE supplies such as bouffants, booties, gloves, earplugs, etc.

- Size: 10 x 10 x 10
- 4" round opening in front for easy access
- Table or wall mount

Item #: PEADB



Mini Multi-Use Dispenser with Cover

Easy to store PPE dispenser protects contents with a full cover.

- Size: 12 x 6.5
- Lid protects PPE from airborne contaminants, dust & debris
- Table or wall mount

Item #: PEADM1



Customize your dispensers
Get your message noticed with custom designed acrylic and label options!

Biohazard

Biohazard areas can be dangerous due to many hazards not being visible to the human eye. Clearly mark biohazard areas with proper identification products including floor signs, labels, signs, and barricade tape.

Double-Sided Floor Signs

- Made of lightweight 4 mm corrugated polyethylene
- Printed on four sides, one message on the outside and another message on the inside
- Water-proof
- Folds easily for convenient storage
- 19" x 12"

Item #: PEFS37



Signs & Labels

Includes the universally recognized biohazard symbol and meet OSHA's marking requirement in standard 1910.1030 for bloodborne pathogens.

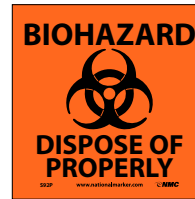
Materials
Pressure Sensitive Vinyl (PSV)
Pressure Sensitive Paper (PSP)
Rigid Plastic (RB)



PSP 1 x 3, 500/Roll PEWOL6



PSP 1 x 3, 500/Roll PEWOL7



PSV 7 x 7 PES92P
RB 7 x 7 PES92R



PSV 7 x 7 PES93P
RB 7 x 7 PES93R



PSV 4 x 4, 5/Pk PES52AP
PSV 7 x 7 PES52P
RB 7 x 7 PES52R
PSP 3 x 3, 500/Roll PES52RL



PSV 10 x 18 PESPSA52P
RB 10 x 18 PESPSA52R

Tags

The use of tags is permitted for compliance, as outlined in OSHA standard 1910.145. Biohazard tags measuring 6" x 3" are versatile when labels may not be the ideal solution.

- Pack of 25



PERPT54

Barricade Tape

Biohazard barricade tape measures 3" by 1000-ft long with a continuous repeat of the text shown below.



PEPT40

Back to Work Kits

Key products kitted to address your immediate back to work needs

Kits provide the essentials you need to begin properly identifying your facility as the doors open to workers, customers, contractors, vendors and others. Choose from three kits geared towards small, medium, or large facilities.

Each kit contains applicable products in a variety of quantities to communicate important health and safety measures from lobby to loading dock.

- Be ready to re-open your business
- Provide clear, professional messaging
- Product assortments based on best sellers
- Kits contain handwashing signs, posters, floor tapes and social distancing floor signs

Small Kit

Item #
PEBWK01



- (1) 5/Pack of 6" dia. clear PSV, NO HANDSHAKE labels
- (1) 10 x 14 Rigid Plastic, NOTICE PRACTICE SOCIAL DISTANCING sign
- (1) 14 x 10 PSV, NOTICE FACE MASK REQUIRED sign
- (2) 5/Packs of 3 x 5 PSV, NOTICE WASH YOUR HANDS BEFORE RETURNING TO WORK labels
- (4) 7 x 10 Rigid Plastic, WASH YOUR HANDS signs

- (2) 18 x 24 Heavy-Duty Poster Paper, WASH YOUR HANDS posters
- (1) 24 x 18 Heavy-Duty Poster Paper, STOP THE SPREAD OF GERMS poster
- (2) Rolls of 2 x 108' Yellow 6-mil Floor Tape
- (2) 12 x 12 SOCIAL DISTANCING floor signs in Walk-On™ material
- (2) 12 x 12 PLEASE KEEP A SAFE DISTANCE floor signs in Walk-On™ material

Medium Kit

Item No.

PEBWK02



- (2) 5/Packs of 6" dia. Clear PSV, NO HANDSHAKE labels
- (2) 10 x 14 Rigid Plastic, NOTICE PRACTICE SOCIAL DISTANCING signs
- (2) 5/Packs of 3 x 5 PSV, NOTICE WASH YOUR HANDS BEFORE RETURNING TO WORK labels
- (6) 7 x 10 Rigid Plastic, WASH YOUR HANDS signs
- (4) 14 x 10, PSV, NOTICE FACE MASK REQUIRED signs
- (1) 5/Pack of 18 x 12, Paper, USE OF CLOTH FACE COVERINGS posters
- (1) 5/Pack of 18 x 12, Paper, GUIDELINES FOR WEARING A MASK posters
- (4) 12 x 18 Unrippable Vinyl, WASH YOUR HANDS posters
- (2) 24 x 18 Heavy-Duty Poster Paper, STOP THE SPREAD OF GERMS poster
- (3) Rolls of 2 x 108' Yellow 6-mil Floor Tape
- (2) 12 x 12 SOCIAL DISTANCING floor signs in Walk-On™ material
- (2) 10/Packs of 2.25 x 20 THANK YOUR FOR PRACTICING SOCIAL DISTANCING floor strips in of Temp-Step™ material
- (2) 12 x 12 PLEASE KEEP A SAFE DISTANCE floor signs in Walk-On™ material
- (2) 6 x 9 Plastic HAND SANITIZING STATION 3D wall signs

Large Kit

Item #

PEBWK03



- (2) 5/Packs of 6" dia. clear PSV, NO HANDSHAKE labels
- (4) 10 x 14 Rigid Plastic, NOTICE PRACTICE SOCIAL DISTANCING signs
- (4) 5/Packs of 3 x 5 Removable PSV, NOTICE WASH YOUR HANDS BEFORE RETURNING TO WORK labels
- (6) 7 x 10 Rigid Plastic, WASH YOUR HANDS signs
- (2) 14 x 10 Rigid Plastic, TEMPERATURE CHECK STATION signs
- (6) 14 x 10, PSV, NOTICE FACE MASK REQUIRED signs
- (4) 5/Packs of 18 x 12 Paper, USE OF CLOTH FACE COVERINGS posters
- (2) 5/Packs of 8 x 12 Paper, GUIDELINES FOR WEARING A MASK posters
- (2) 18 x 12 Unrippable Vinyl, WELCOME NO HAND SHAKES posters
- (2) 18 x 24 Heavy Duty Poster Paper, WASH YOUR HANDS posters
- (4) 18 x 24 Heavy Duty Poster Paper, STOP THE SPREAD OF GERMS posters
- (4) Rolls of 2 x 108' Yellow 6-mil Floor Tape
- (4) 12 x 12 SOCIAL DISTANCING floor signs in Walk-On™ material
- (3) 10/Packs of 2.25 x 20 THANK YOUR FOR PRACTICING SOCIAL DISTANCING floor strips in Temp-Step™ material
- (4) 12 x 12 PLEASE KEEP A SAFE DISTANCE floor signs in Walk-On™ material
- (4) 6 x 9 Plastic HAND SANITIZING STATION 3D wall signs

COVID-19 Tyvek® Workplace & Jobsite Screening Wristbands

Make Safety Visible with Tyvek® Screening Wristbands



Qty: 500/Box

Description:

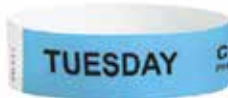
NMC's Tyvek® 3/4" x 10" COVID-19 Workplace & Jobsite Screening Wristbands were created with employee health and well-being in mind. Wristbands are pre-printed with messaging to showcase who should/should not be on a job-site or in the workplace. NMC offers a variety of colors and designs including prescreen, visitor, temperature, and days of the week. Custom messages are available.

Features:

- Made with durable, 100% DuPont™ Tyvek®
- Secure and tamper-evident closure
- Sequentially numbered for accountability
- Waterproof and tear-resistant
- Ideal for short-term use: 1-2 days
- Custom imprinting, barcoding and custom numbering available
- Made in the U.S.A



PEWB01BL



PEWB01SB



PEWB01YL



PEWB01AQ



PEWB01RD



PEWB01GR



PEWB01OR



PEWB02GR



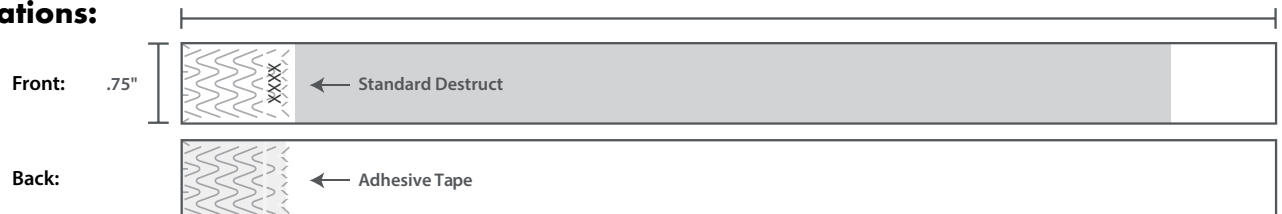
PEWB03RD



PEWB04PK

10"

3/4" Specifications:



Tyvek® is a registered trademark of DuPont®.

SAFETY SIGNAGE SOLUTIONS

Würth Baer Supply

909 Forest Edge Drive
Vernon Hills, IL 60061
T: 800-289-2237
F: 888-558-2237
www.wuerthbaersupply.com

Other locations:

Bethlehem, PA
Brooklyn Heights, OH
Columbus, OH
Eagan, MN
Edison, NJ

Elk Grove Village, IL
Guilderland Ctr, NY
Harrisburg, PA
Indianapolis, IN
Kansas City, MO
Leetsdale, PA

Londonderry, NH
Middletown, OH
Oak Park, MI
Pennsauken, NJ
Pewaukee, WI
Rumford, RI