

Würth Baer Supply

QUIET GLIDE ROLLING LIBRARY LADDER



**QUIET
GLIDE™**
MADE IN USA

A Closer Look:

- **5 Top Roller Options**
(Standard, Single Hook, Double Hook, Rolling Hook and Swivel)
- High-density nylon wheels for smooth gliding motion
- Solid aluminum rails with decorative ball end caps (optional)
- Sanded to 120-grit with pre-drilled assembly holes
- **3 Stocked Height Options**
(8', 9' and 10' custom heights available)
- **2 Width Options** (16" and 20")
- Dadoed sides and steel support rods for reinforced step strength
- **4 Stocked Wood Species** (Red Oak, Maple, Cherry and Walnut - custom species available)
- Non-skid rubber wheels. Glides effortlessly on any floor type.
- **New Non-Skid Foot Available**
- **3 Wheel Types** (Standard, Brake and Contemporary)



Rolling Ladder Hardware Kits

Each kit includes:

- 2 Top Rollers
- 2 Bottom Wheels
- 7 Rung Support Rods (enough for 8' ladder)
- All Necessary Fasteners

Top Roller Styles:



Standard Roller
Consists of a top and bottom wheel, keeping the ladder fixed onto the rail.



Rolling Hook
Has only one wheel on the top, so the ladder can be removed easily.

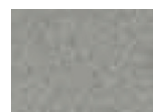


Swivel Roller
Features a built-in swivel, which allows the ladder to be used on curved rails.

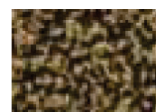
Finishes:



Black



Satin Nickel



Hammered Antique Brass*



Oil Rubbed Bronze



Chrome

*Patterns may vary

Top Hook Styles:



Single Adjustable Hook
Has one hook on the top. The base is adjustable for easy storage.



Double Hook - NEW!
Cost effective alternative. The top hook is for when the ladder is in use and bottom hook is for stow-away.

1A SELECT A TOP & BOTTOM LADDER END KIT



Standard Wheel with Standard Roller Kits

Item #	Ladder Width	Color
QG20002	16"	Satin Nickel
QG20003	16"	Hamm. Antique Brass
QG20007	16"	Oil Rubbed Bronze
QG20008	16"	Black
QG2002002	20"	Satin Nickel
QG2002003	20"	Hamm. Antique Brass
QG2002007	20"	Oil Rubbed Bronze
QG2002008	20"	Black



Contemporary Wheel with Standard Roller Kits

Item #	Ladder Width	Color
QG22002	16"	Satin Nickel
QG22003	16"	Hamm. Antique Brass
QG22007	16"	Oil Rubbed Bronze
QG22008	16"	Black
QG2202002	20"	Satin Nickel
QG2202003	20"	Hamm. Antique Brass
QG2202007	20"	Oil Rubbed Bronze
QG2202008	20"	Black



Brake Wheel with Standard Roller Kits

Item #	Ladder Width	Color
QG21002	16"	Satin Nickel
QG21003	16"	Hamm. Antique Brass
QG21004	16"	Chrome NEW!
QG21007	16"	Oil Rubbed Bronze
QG21008	16"	Black
QG2102002	20"	Satin Nickel
QG2102003	20"	Hamm. Antique Brass
QG2102004	20"	Chrome NEW!
QG2102007	20"	Oil Rubbed Bronze
QG2102008	20"	Black



Standard Wheel with Rolling Hook Kits

Item #	Ladder Width	Color
QG50002	16"	Satin Nickel
QG50003	16"	Hamm. Antique Brass
QG50007	16"	Oil Rubbed Bronze
QG50008	16"	Black
QG5002002	20"	Satin Nickel
QG5002003	20"	Hamm. Antique Brass
QG5002007	20"	Oil Rubbed Bronze
QG5002008	20"	Black



Contemporary Wheel with Rolling Hook Kits

Item #	Ladder Width	Color
QG52002	16"	Satin Nickel
QG52003	16"	Hamm. Antique Brass
QG52007	16"	Oil Rubbed Bronze
QG52008	16"	Black
QG5202002	20"	Satin Nickel
QG5202003	20"	Hamm. Antique Brass
QG5202007	20"	Oil Rubbed Bronze
QG5202008	20"	Black



Brake Wheel with Rolling Hook Kits

Item #	Ladder Width	Color
QG51002	16"	Satin Nickel
QG51003	16"	Hamm. Antique Brass
QG51004	16"	Chrome NEW!
QG51007	16"	Oil Rubbed Bronze
QG51008	16"	Black
QG5102002	20"	Satin Nickel
QG5102003	20"	Hamm. Antique Brass
QG5102004	20"	Chrome NEW!
QG5102007	20"	Oil Rubbed Bronze
QG5102008	20"	Black



Standard Wheel with Swivel Roller Kits

Item #	Ladder Width	Color
QG70002	16"	Satin Nickel
QG70003	16"	Hamm. Antique Brass
QG70007	16"	Oil Rubbed Bronze
QG70008	16"	Black
QG7002002	20"	Satin Nickel
QG7002003	20"	Hamm. Antique Brass
QG7002007	20"	Oil Rubbed Bronze
QG7002008	20"	Black



Contemporary Wheel with Swivel Roller Kits

Item #	Ladder Width	Color
QG72002	16"	Satin Nickel
QG72003	16"	Hamm. Antique Brass
QG72007	16"	Oil Rubbed Bronze
QG72008	16"	Black
QG7202002	20"	Satin Nickel
QG7202003	20"	Hamm. Antique Brass
QG7202007	20"	Oil Rubbed Bronze
QG7202008	20"	Black



Brake Wheel with Swivel Roller Kits

Item #	Ladder Width	Color
QG71002	16"	Satin Nickel
QG71003	16"	Hamm. Antique Brass
QG71007	16"	Oil Rubbed Bronze
QG71008	16"	Black
QG7102002	20"	Satin Nickel
QG7102003	20"	Hamm. Antique Brass
QG7102007	20"	Oil Rubbed Bronze
QG7102008	20"	Black

1B OR SELECT INDIVIDUAL TOP & BOTTOM COMPONENTS

If you would prefer to choose individual ladder components instead of an entire kit, go right ahead! Note: You will need to purchase individual support rods.



Standard Top Roller Guide
(Sold Individually)

The standard roller consists of top and bottom wheels, keeping your ladder fixed onto the rail. Includes all necessary hardware.

Item #	Color
QGLLTRGUIDE02	Satin Nickel
QGLLTRGUIDE03	Hamm. Antique Brass
QGLLTRGUIDE04	Chrome
QGLLTRGUIDE07	Oil Rubbed Bronze
QGLLTRGUIDE08	Black



Rolling Hook Top Guide
(Sold Individually)

The rolling hook guide has one top wheel that allows for easy rolling and easy removal. Includes installation hardware.

Item #	Color
QGLLRHGUIDE02	Satin Nickel
QGLLRHGUIDE03	Hamm. Antique Brass
QGLLRHGUIDE04	Chrome
QGLLRHGUIDE07	Oil Rubbed Bronze
QGLLRHGUIDE08	Black



Swivel Top Roller Guide
(Sold Individually)

This roller guide has a built-in swivel, allowing the ladder to glide along curved rails. Includes installation hardware.

Item #	Color
QGLLSWGUIDE02	Satin Nickel
QGLLSWGUIDE03	Hamm. Antique Brass
QGLLSWGUIDE07	Oil Rubbed Bronze
QGLLSWGUIDE08	Black



Single Adjustable Hook Top Guide
(Sold Individually)

Only compatible with the Non-Skid Foot assembly. Includes installation hardware.

Item #	Color
QGLLTHGUIDE02	Satin Nickel
QGLLTHGUIDE03	Hamm. Antique Brass
QGLLTHGUIDE07	Oil Rubbed Bronze
QGLLTHGUIDE08	Black



Double Hook Top Guide
(Sold Individually)

Only compatible with the Non-Skid Foot assembly. Includes hardware.

Item #	Color
QGLLDHGUIDE02	Satin Nickel
QGLLDHGUIDE07	Oil Rubbed Bronze
QGLLDHGUIDE08	Black



Standard Ladder Wheel Assembly
(Sold Individually)

Includes installation hardware.


Item #	Color
QGLLWHEELASSB02	Satin Nickel
QGLLWHEELASSB03	Hamm. Antique Brass
QGLLWHEELASSB07	Oil Rubbed Bronze
QGLLWHEELASSB08	Black



Contemporary Ladder Wheel Assembly
(Sold Individually)

Includes installation hardware.

Item #	Color
QGLLWHEELASSB0102	Satin Nickel
QGLLWHEELASSB0103	Hamm. Antique Brass
QGLLWHEELASSB0107	Oil Rubbed Bronze
QGLLWHEELASSB0108	Black



Brake Ladder Wheel Assembly
(Sold Individually)

Includes installation hardware.

Item #	Color
QGLLWHLASSBBK02	Satin Nickel
QGLLWHLASSBBK03	Hamm. Antique Brass
QGLLWHLASSBBK04	Chrome
QGLLWHLASSBBK07	Oil Rubbed Bronze
QGLLWHLASSBBK08	Black



Non-Skid Foot Assembly
(Sold Individually)

Compatible with any top guide. Includes installation hardware.

Item #	Color
QGLLSFOOT02	Satin Nickel
QGLLSFOOT07	Oil Rubbed Bronze
QGLLSFOOT08	Black

NEW Non-Rolling Kits!

Moveable ladder that does not roll. Comes with 7 step supports (enough for 8' ladder)



Non-Skid Foot with Single Adjustable Hook Kits

Item #	Ladder Width	Color
QG33002	16"	Satin Nickel
QG33007	16"	Oil Rubbed Bronze
QG33008	16"	Black
QG3302002	20"	Satin Nickel
QG3302007	20"	Oil Rubbed Bronze
QG3302008	20"	Black



Non-Skid Foot with Double Hook Kits

Item #	Ladder Width	Color
QG13002	16"	Satin Nickel
QG13007	16"	Oil Rubbed Bronze
QG13008	16"	Black
QG1302002	20"	Satin Nickel
QG1302007	20"	Oil Rubbed Bronze
QG1302008	20"	Black

2 SELECT A WOOD LADDER



Standard 16" Ladder

Original Rolling Library Ladder. Great for tight spaces.

Item #	Wood Species
8' Ladder	
QG6008CH	Cherry
QG6008MA	Maple
QG6008RO	Red Oak
QG6008WA	Walnut
9' Ladder	
QG6009CH	Cherry
QG6009MA	Maple
QG6009RO	Red Oak
QG6009WA	Walnut
10' Ladder	
QG6010CH	Cherry
QG6010MA	Maple
QG6010RO	Red Oak
QG6010WA	Walnut



Standard 20" Ladder

A wider ladder for added stability, space and comfort.

Item #	Wood Species
8' Ladder	
QG600820CH	Cherry
QG600820MA	Maple
QG600820RO	Red Oak
QG600820WA	Walnut
9' Ladder	
QG600920CH	Cherry
QG600920MA	Maple
QG600920RO	Red Oak
QG600920WA	Walnut
10' Ladder	
QG601020CH	Cherry
QG601020MA	Maple
QG601020RO	Red Oak
QG601020WA	Walnut



Steam-Bent Solid Wood Hand Rails

Unfinished, sanded to 120-grit and has pre-drilled assembly holes. Sold in pairs. Specify for Black or Satin Nickel fasteners (included).

Item #	Wood Species
QG6309CH	Cherry
QG6309HC	Hickory
QG6309MA	Maple
QG6309RO	Red Oak
QG6309WA	Walnut



Additional Step Supports - for Custom Ladders and Ladders over 8'

These additional step support rods are only needed when ordering Quiet Glide ladders over 8' tall. If you're building your own ladder, use one support rod per step. Fasteners are included.

Item #	Finish	Width
QG62002	Satin Nickel	16"
QG6202002	Satin Nickel	20"
QG62004	Chrome	16"
QG6202004	Chrome	20"
QG62008	Black	16"
QG6202008	Black	20"



Top-Turned Rungs

When building your own ladder, these top-turned rungs are a nice addition. Already included with "in-stock" ladders.

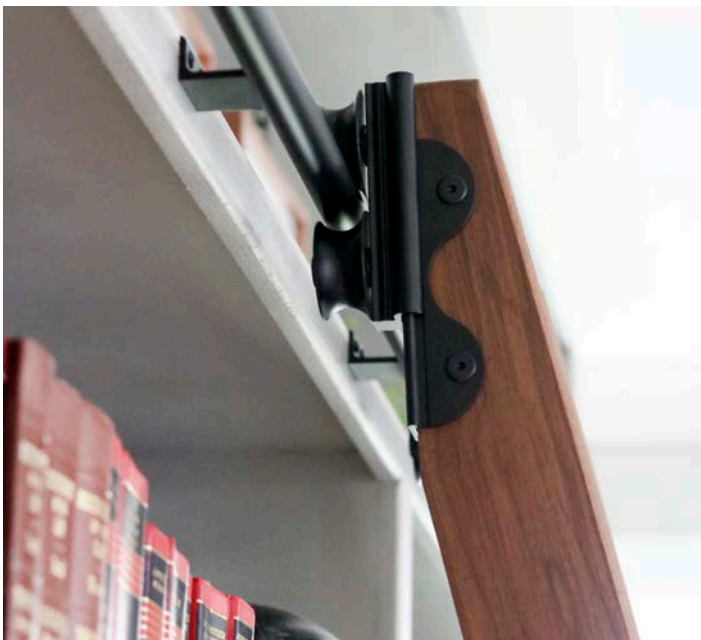
Item #	Finish	Width
QG610AD	Alder	16"
QG61020AD	Alder	20"
QG610AS	Ash	16"
QG61020AS	Ash	20"
QG610CH	Cherry	16"
QG61020CH	Cherry	20"
QG610HC	Hickory	16"
QG61020HC	Hickory	20"
QG610MG	Mahogany	16"
QG61020MG	Mahogany	20"
QG610MA	Maple	16"
QG61020MA	Maple	20"
QG610PN	Pine	16"
QG61020PN	Pine	20"
QG610RO	Red Oak	16"
QG61020RO	Red Oak	20"
QG610WA	Walnut	16"
QG61020WA	Walnut	20"



Non-Skid Tread For Ladder Steps

Measures 3" x 13" with 1/4" radius corners. Should be installed after the ladder is finished.

Item #	Color
QG61	Clear



3 SELECT RAIL COMPONENTS

Straight Rail - Three Different Lengths

Item #	Rail Length	Finish
QG400402	4'	Satin Nickel
QG400403	4'	Hamm. Ant. Brass
QG400404	4'	Chrome
QG400407	4'	Oil Rub Bronze
QG400408	4'	Black

Item #	Rail Length	Finish
QG400602	6'	Satin Nickel
QG400603	6'	Hamm. Ant. Brass
QG400604	6'	Chrome
QG400607	6'	Oil Rub Bronze
QG400608	6'	Black

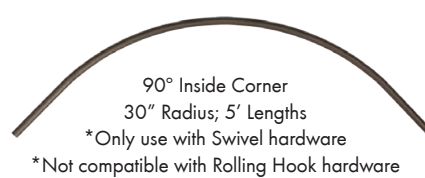
Item #	Rail Length	Finish
QG400802	8'	Satin Nickel
QG400803	8'	Hamm. Ant. Brass
QG400807	8'	Oil Rub Bronze
QG400808	8'	Black

135-Degree Curved Rail*



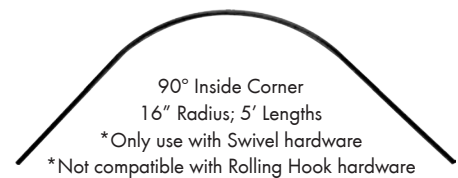
Item #	Finish
QG40CRV13502	Satin Nickel
QG40CRV13503	Hamm. Ant. Brass
QG40CRV13507	Oil Rubbed Bronze
QG40CRV13508	Black

90-Degree Curved Rail*



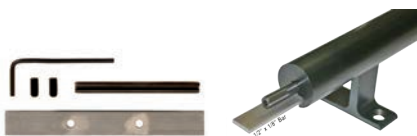
Item #	Finish
QG40CRV02	Satin Nickel
QG40CRV03	Hamm. Ant. Brass
QG40CRV07	Oil Rubbed Bronze
QG40CRV08	Black

90-Degree Curved Rail*



Item #	Finish
QG40CRV1602	Satin Nickel
QG40CRV1603	Hamm. Ant. Brass
QG40CRV1607	Oil Rubbed Bronze
QG40CRV1608	Black

Splice Kit for Joining Round Rails Together



Item #	Size
QG41	1/2" x 1/8" Bar

Standard End Cap Kit for Round Rails

Made out of solid steel. Each kit includes 2 caps (1-1/4" dia.) and 2 fastening bolts (1/4" #20 x 18mm)



Item #	Finish
QG4002	Satin Nickel
QG4003	Hammered Antique Brass
QG4004	Chrome
QG4007	Oil Rubbed Bronze
QG4008	Black

Ball End Cap Kit for Round Rails

Made out of solid steel. Each kit includes 2 caps (1-1/4" dia.) and 2 fastening bolts (1/4" #20 x 18mm)



Item #	Finish
QG40102	Satin Nickel
QG40103*	Hammered Antique Brass
QG40107	Oil Rubbed Bronze
QG40108	Black

Thread Tap Accessory

Accessory used to make threads at the end of rails for end caps.



Item #	Size
QGTAP1420	1/4" x 20 Tap

End Cover Kit for Chrome Rails

Made with solid steel and plated Chrome. For use when cutting chrome rails to conceal chipping. Each kit includes 2 caps and 2 fastening bolts (1/4" #20 x 18mm)



Item #	Finish
QG40304	Chrome

3 SELECT RAIL COMPONENTS

Wall-Mounting Bracket for Round Rails

Choose brackets, based on the top roller choice you made (in Step 1). Sold as each. Screws are included.

Vertical Rolling/Swivel Bracket

For use with Standard Top Rollers and Swivel Rollers.



Item #	Finish
QG20102	Satin Nickel
QG20103	Hammered Antique Brass
QG20104	Chrome
QG20107	Oil Rubbed Bronze
QG20108	Black

Vertical Rolling Hook Bracket

For use with Rolling Hook Top Rollers.



Item #	Finish
QG30102	Satin Nickel
QG30103	Hammered Antique Brass
QG30104	Chrome
QG30107	Oil Rubbed Bronze
QG30108	Black

Horizontal Rolling/Swivel Bracket

For use with Standard Top Rollers and Swivel Rollers.



Item #	Finish
QG20102	Satin Nickel
QG20103	Hammered Antique Brass
QG20104	Chrome
QG20107	Oil Rubbed Bronze
QG20108	Black

Horizontal Rolling/Swivel Bracket

For use with Rolling Hook Top Rollers.



Item #	Finish
QG20102	Satin Nickel
QG20103	Hammered Antique Brass
QG20104	Chrome
QG20107	Oil Rubbed Bronze
QG20108	Black

These brackets are used to mount the round rail to the wall. You will need 1 bracket for every 32" or 4 brackets for an 8' rail. Wall brackets must be mounted securely into studs.



QUIET GLIDE ROLLING LIBRARY LADDER

Würth Baer Supply
909 Forest Edge Drive
Vernon Hills, IL 60061
T: 800-289-2237
F: 888-558-2237
www.wurthbaersupply.com

Other locations:

West Haven, CT
Elk Grove Village, IL
Indianapolis, IN
Versailles, KY
Oak Park, MI
Eagan, MN

Fenton, MO
Kansas City, MO
Londonderry, NH
Edison, NJ
Pennsauken, NJ
Syracuse, NY
Guilderland Center, NY

Brooklyn Heights, OH
Columbus, OH
Middletown, OH
Bethlehem, PA
Harrisburg, PA
Rumford, RI
Pewaukee, WI