

 **Berenson**

DECORATIVE HARDWARE

Catalog 15





Berenson is committed to providing a hassle-free customer experience in selecting decorative hardware. That's why we have an industry-leading sample program, same-day shipping to get you your product when you need it and an excellent fulfillment rate.

We want Berenson to be your first choice for decorative hardware, so we offer unique solutions and a wide variety of quality hardware for every price point. From traditional to contemporary, in an expansive array of finishes and designs, there is something here for everyone.



Table of Contents

What's New

New Finishes 4-5

GENERAL INFORMATION

Finish Guide 6-7
 Key to Codes 8
 Free Sample Program 9
 Berenson Series Guide 12-13
Display Boards 126-132
Display Towers 133
 Installation Guide 134
 FAQ 135
 Part Number Index 136-146

CLASSIC Comfort

Aspire 16-17
 Connections 19
 Designers' Group Ten 22-23
 Dierdra 26-27
 Domestic Bliss 30-31
 Euro Moderno 33
 Forté 34-35
 Meadow 36-37
 Oasis 38
 Opus 39
 Subtle Surge 42-43
 Tempo 44-47
 ⚡ Valencia 48
 Virtuoso 49

UPTOWN Appeal

Bravo 52-53
 Elevate 56-57
 Epoch Edge 58-59
 Fluidic 60
 Laura 61
 Metro 64-65
 Skyline 68-69
 Stainless Steel 70-71
 Studio 73
 Swagger 74-75

TIMELESS CHARM

American Classics 78-79
 Andante 81
 Echo 82-83
 Euro Classica 84
 Euro Traditions 85
 Harmony 86-87
 Hearthstone 90-91
 Hillcrest 92
 Maestro 93
 Prelude 95
 Tailored Traditional 96-97
 Vested Interest 98-99
 Vibrato 100-101
 Village 103

Artisan Inspired

Art Nouveau 106
 Euro Rustica 107
 Oak Park 108
 Overture 109
 Puritan 110
 Rhapsody 111
 Sonata 112
 Toccata 113

⚡ MIX & match

Use the colored corner markings to find different sections.

Look for the lightning bolt to find Berenson Extreme Finish hardware that exceeds BHMA standards by up to 10x! ⚡

NEW Finishes & Sizes

As styles and trends change, we continue to update our offering to meet those needs. We have increased our options available in **Matte Black, Slate, Modern Brushed Gold, and Brushed Copper.**

These finishes can be found in our **Swagger, Domestic Bliss, and Bravo** collections, as well as cup pulls, and a mushroom knob. We've also added a smaller knob size to the **Elevate** collection.



Swagger Knobs & Pulls – Page 75

Matte Black and Slate:
96mm CC, 128mm CC, 160mm CC, 224mm CC, Knob
Coming Summer 2021 - 320mm CC



Domestic Bliss Knobs & Pulls – Page 31

Matte Black and Slate:
96mm CC, 128mm CC, 160mm CC, Knob
Coming Summer 2021 - 224mm CC & 320mm CC



Round Mushroom Knob – Page 122

Modern Brushed Gold



Cup Pulls – Pages 122 & 123

Matte Black and Modern Brushed Gold



Elevate Knobs – Page 57

Smaller Size in all Finishes:
Brushed Nickel, Graphite, Matte Black,
Polished Chrome, Satin Gold, Verona Bronze



Bravo Edge Pulls – Page 53

Brushed Copper in all lengths:
32mm CC, 56mm CC, 112mm CC, 169mm CC

Finish Guide

Our Most Popular Finishes:



55 Black/Matte Black/Satin Black



BPN Brushed Nickel



MDB Modern Brushed Gold



26 Polished Chrome



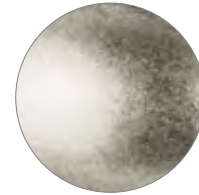
VB Verona Bronze



VTN Vintage Nickel



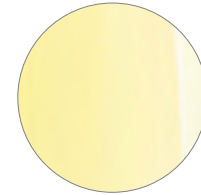
Aluminum
ALU



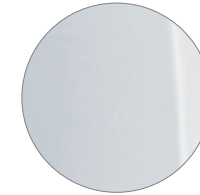
Antique Pewter
AP



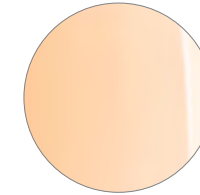
Black / Matte Black /
Satin Black
55



Polished Brass
03



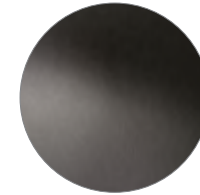
Polished Chrome
26



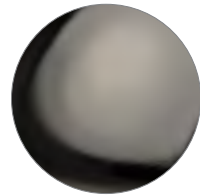
Polished Copper
PC



Polished Nickel
14



Rubbed Bronze
10



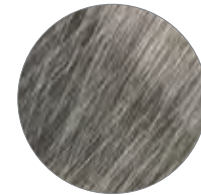
Black Nickel
98



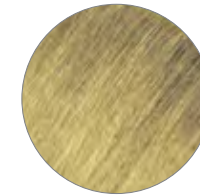
Brushed Antique Brass
BAB



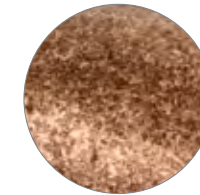
Brushed Antique Copper
BAC



Rustic Black Nickel
RBN



Rustic Brushed Brass
RAB



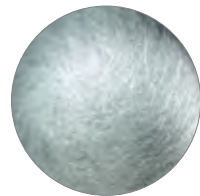
Rustic Copper
RC



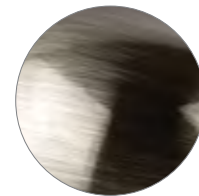
Rustic Iron
RI



Rustic Nickel
RN



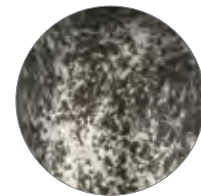
Brushed Antique Pewter
BAP



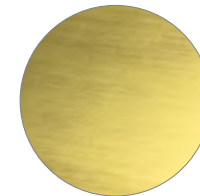
Brushed Black Nickel
BBN



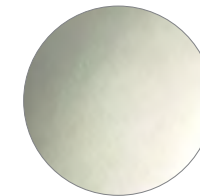
Brushed Bronze
BBZ



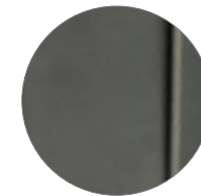
Rustic Tin
RT



Satin Gold
SG



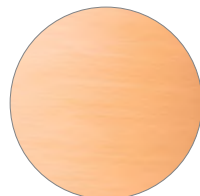
Satin Nickel
15



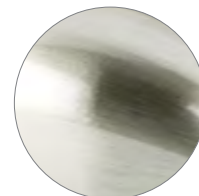
Slate
SLT



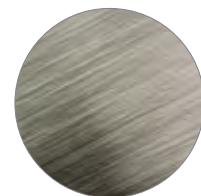
Stainless Steel
SS



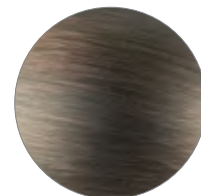
Brushed Copper
BC



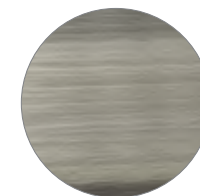
Brushed Nickel
BPN



Brushed Tin
BT



Verona Bronze
VB



Vintage Nickel
VTN



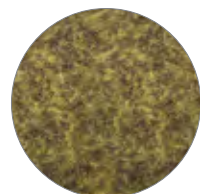
Weathered Copper
WC



Weathered Iron
LWI



Weathered Nickel
WN



Dull Antique Brass
DAB



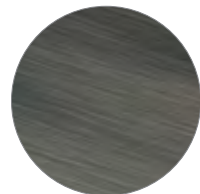
Dull Bronze
DBZ



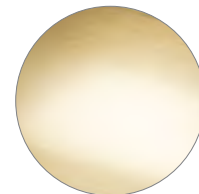
Dull Rust
FE



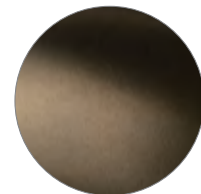
Weathered Verona Bronze
WVB



Graphite
GPH



Modern Brushed Gold
MDB



Oil Rubbed Bronze
ORB

Additional Finishes in Our Mix and Match Series:



Antique Iron
AI



Antique Silver
99



Bronze Rust Glaze
RBG



Crystal
CRYSTAL



Dark Copper
DC



Gold
07



Rust Glaze
RG



Satin Brass
SB



Tin
TIN



White Ceramic
39



Wood
WOOD

Key to Codes

PART NUMBER BREAKDOWN

Parts Are Identified As Follows:

ITEM #: Four-digit item code (followed by a dash)

MATERIAL: One-digit primary material code

FINISH: Two-digit code or a character code (two or three letters) to distinguish the finish (followed by a dash)

PACKAGING: One-letter packaging code

Example

PART NUMBER

2368-1MDB-P
 ITEM # MATERIAL FINISH PACKAGING

Description of Above Example:
 Zinc Diecast, Modern Brushed Gold,
 Polybagged w/ Mounting Hardware

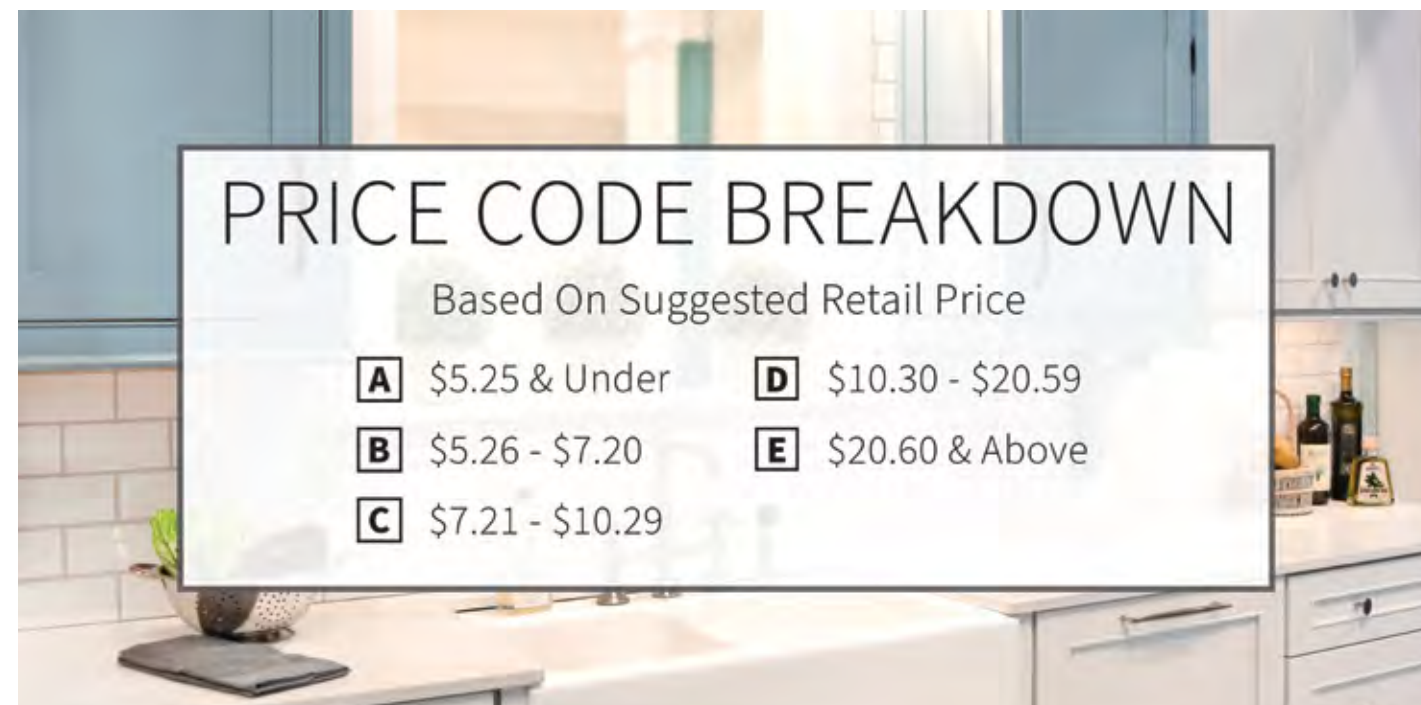
Key to Material Codes:

- 1 Zinc Diecast (Zamac)
- 2 Steel
- 3 Brass
- 4 Aluminum
- 5 Ceramic / Porcelain
- 6 Wood
- 7 Plastic / Acrylic
- 9 Other (Stainless Steel or Crystal)

Key to Finish Codes: see pages 6-7 for codes

Key to Packaging Codes:

- B** Item is supplied in bulk without mounting screws or escutcheon pins. (Mounting hardware ordered separately.)
- C** Item is supplied in a carton with 8-32 x 1in. or M4 x 45mm break off screws.
- P** Item is individually polybagged with 8-32 x 1in. screws or other mounting hardware.



Samplicity

BENEFITS

We want to ensure that our customers are confident in their purchase with us, which is why we make ordering samples simple and convenient. Through Samplicity, our industry leading sample program, we provide a hassle-free customer experience and more samples than anyone else!

Sample requests can be placed through our website, www.BerensonHardware.com by industry professionals who have a registered account. *Designers and dealers can request free samples for customers by email.*

Samples will be sent directly to the address provided. **You must have a mail receptacle to receive the package.**

NUMBER OF SAMPLES
 Order up to 5 samples. (Limit of one piece per style)

✓ PRODUCTS INCLUDED*
 Berenson and Advantage Plus by Berenson knobs and pulls of 160mm CC or less.

📦 SHIPPING
 Free samples also qualify for free shipping! All samples are shipped via USPS mail. *You must have a mail receptacle to receive the package.*



FREE SAMPLE CLIP

As a bonus, you can choose to receive a free sample clip with your order. This unique clip lets you preview how our hardware looks on your cabinet door or drawer without the commitment of drilling holes. Choose between a 1in. clip, best for doors, or a 3in. clip, best for drawers.

3 Easy Steps

1 **Log in to your account** at www.BerensonHardware.com. Then select the part you would like a sample of and click the **Request A Sample** button.

2 A window will pop up requesting **shipping info** and credit card info, if the sample requires a payment.

3 After you fill in the required information, click **Submit Sample Request** and your request will be processed.

NOTE: *Longer lengths and R. Christensen by Berenson hardware can be ordered as a sample at 50% off MSRP with paid flat rate shipping (\$4 per part). Hooks, latches and appliance pulls are not available as samples. *Sample parts are not for display. Please contact us for display items and options.*



Berenson Series

CLASSIC *Comfort*

Transitional Style Parts

PROFILE

casual, subtle curves, minimal detail



FINISHES

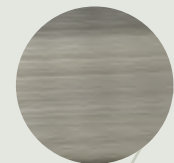
tones that emphasize contrast with cabinets



Brushed Nickel
BPN



Polished Nickel
14



Vintage Nickel
VTN



Black/Matte Black/Satin Black
55

Pages 16 - 49

UPTOWN *Appeal*

Contemporary Style Parts

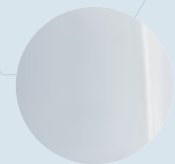
PROFILE

sleek, defined edges, straight lines



FINISHES

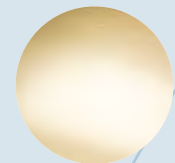
bold, metallic finishes and polished surfaces



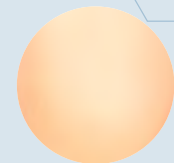
Polished Chrome
26



Black/Matte Black/Satin Black
55



Modern Brushed Gold
MDB



Polished Copper
PC

Pages 52 - 75

TIMELESS *CHARM*

Traditional Style Parts

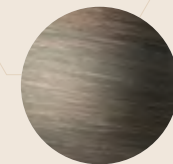
PROFILE

ornate, distinct accents, embellishments



FINISHES

warm, soft tones that create a relaxed look



Verona Bronze
VB



Polished Nickel
14



Oil Rubbed Bronze
ORB



Brushed Nickel
BPN

Pages 78 - 103

Artisan *Inspired*

Craftsman Style Parts

PROFILE

detailed, vivid textures, engaging patterns

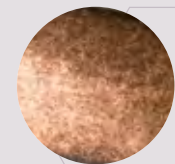


FINISHES

natural metals with a worn appearance



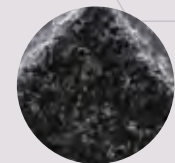
Rustic Nickel
RN



Rustic Copper
RC



Weathered Nickel
WN



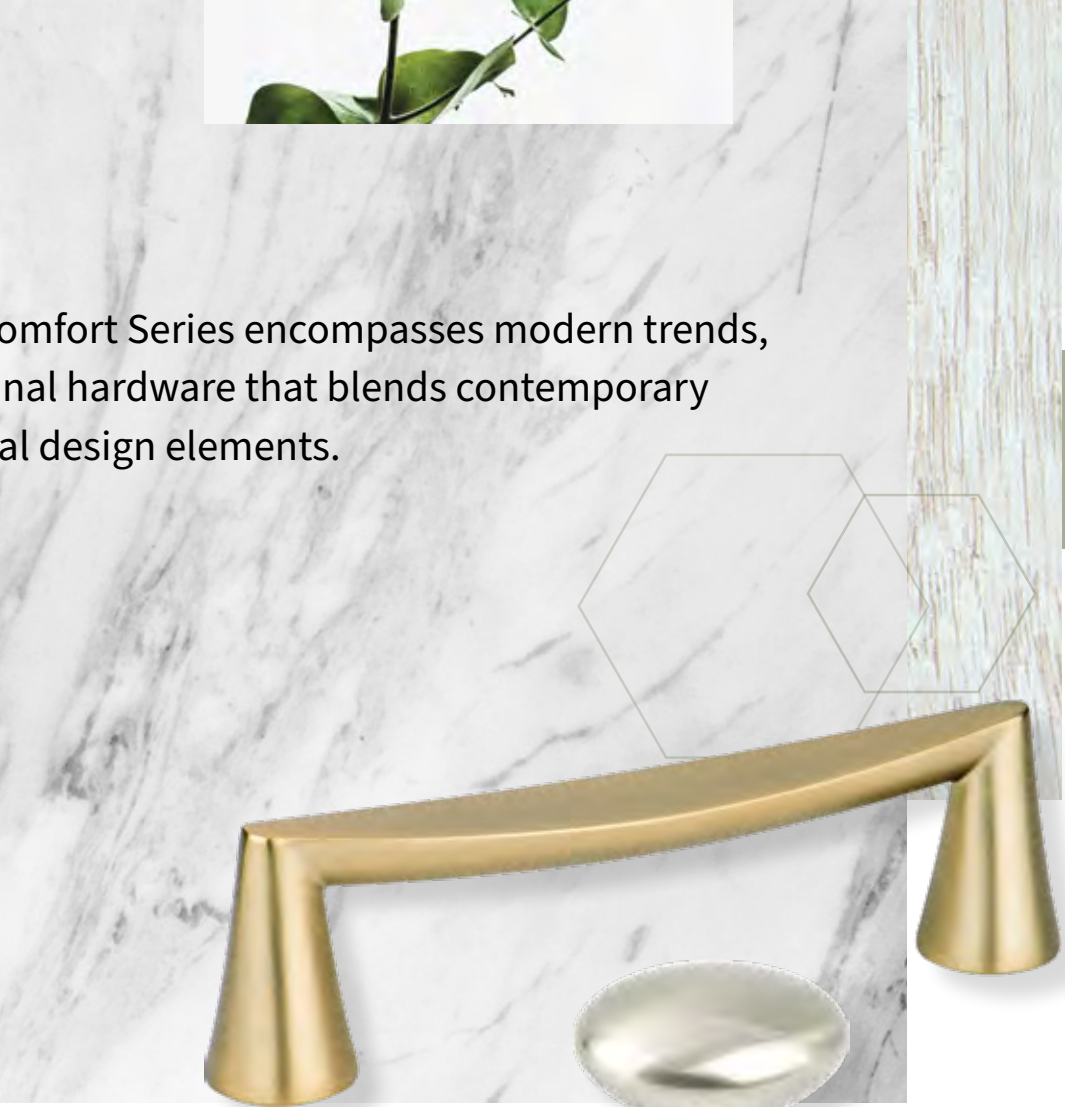
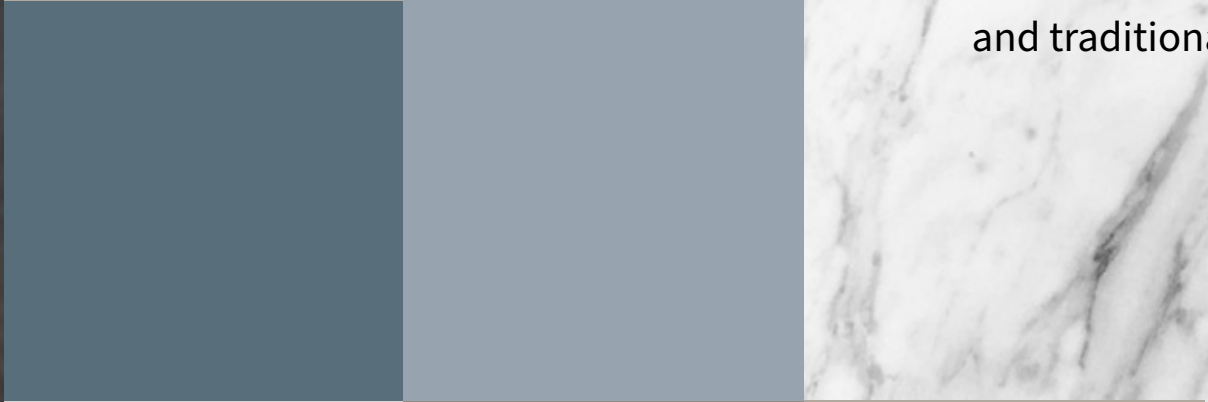
Weathered Iron
LWI

Pages 106 - 113

CLASSIC *Comfort*



Our Classic Comfort Series encompasses modern trends, with transitional hardware that blends contemporary and traditional design elements.



Aspire

CLASSIC Comfort • Transitional
collection featured in brushed tin



AVAILABLE SIZES:
18in., 12in., 160mm, 128mm, and 96mm CC, knob

CC	Product Type	Length	Width	Height/Projection	Diameter	Base	Tap	Price Code
18in.	*Appliance Pull	18 3/8in.	1 1/2in.	1 1/8in.	-	1/2in.	10-24	E
12in.	*Appliance Pull	12 7/8in.	1in.	1 1/8in.	-	7/8in.	10-24	E
160mm	Pull	6 1/2in.	1 1/8in.	1 1/4in.	-	5/8in.	8-32	C
128mm	Pull	5 7/8in.	1 1/8in.	1 1/4in.	-	5/8in.	8-32	C
96mm	Pull	4 1/8in.	1 1/8in.	1 1/4in.	-	5/8in.	8-32	C
-	Knob	1 1/4in.	3/4in.	1 3/8in.	-	1 1/8in.	8-32	A

*Product not shown, please visit www.BerensonHardware.com to view images and details.

Aspire Available Finishes, Sizes & Part Numbers:

BRUSHED COPPER		BRUSHED NICKEL		BRUSHED TIN		MATTE BLACK	
18in. CC	Not Available	18in. CC	2148-1BPN-P	18in. CC	2149-10BT-P	18in. CC	2140-1055-P
12in. CC	2145-10BC-P	12in. CC	9240-1BPN-P	12in. CC	9241-10BT-P	12in. CC	2139-1055-P
160mm CC	2144-10BC-P	160mm CC	9237-1BPN-P	160mm CC	9238-10BT-P	160mm CC	2138-1055-P
128mm CC	2143-10BC-P	128mm CC	9234-1BPN-P	128mm CC	9235-10BT-P	128mm CC	2137-1055-P
96mm CC	2142-10BC-P	96mm CC	9231-1BPN-P	96mm CC	9232-10BT-P	96mm CC	2136-1055-P
Knob	2146-10BC-P	Knob	9243-1BPN-P	Knob	9244-10BT-P	Knob	2141-1055-P

MODERN BRUSHED GOLD		POLISHED CHROME		VERONA BRONZE	
18in. CC	2134-1MDB-P	18in. CC	2147-1026-P	18in. CC	2150-10VB-P
12in. CC	2133-1MDB-P	12in. CC	9239-1026-P	12in. CC	2032-10VB-P
160mm CC	2132-1MDB-P	160mm CC	9236-1026-P	160mm CC	2031-10VB-P
128mm CC	2131-1MDB-P	128mm CC	9233-1026-P	128mm CC	2030-10VB-P
96mm CC	2130-1MDB-P	96mm CC	9230-1026-P	96mm CC	2029-10VB-P
Knob	2135-1MDB-P	Knob	9242-1026-P	Knob	2033-10VB-P

Connections

CLASSIC Comfort • Transitional
collection featured in verona bronze



CC	Product Type	Length	Width	Height/Projection	Diameter	Base	Tap	Price Code
160mm	Pull	6 7/8in.	3/4in.	1 1/4in.	-	3/8in.	8-32	C
96mm	Pull	4 3/4in.	1/2in.	1 1/8in.	-	3/8in.	8-32	B
3in.	Pull	3 1/2in.	1/2in.	1 1/8in.	-	3/8in.	8-32	B
-	Knob	1 1/8in.	1 1/8in.	1 1/8in.	-	3/8in.	8-32	B

Connections Available Finishes, Sizes & Part Numbers:



MATTE BLACK

160mm CC	4005-1055-P
96mm CC	4131-1055-P
3in. CC	4002-1055-P
Knob	4008-1055-P



VERONA BRONZE

160mm CC	4006-10VB-P
96mm CC	4132-10VB-P
3in. CC	4003-10VB-P
Knob	4009-10VB-P



VINTAGE NICKEL

160mm CC	4004-1VTN-P
96mm CC	4130-1VTN-P
3in. CC	4001-1VTN-P
Knob	4007-1VTN-P



Designers' Group Ten

CLASSIC Comfort • Transitional
collection only available in polished nickel



AVAILABLE SIZES IN A VARIETY OF STYLES:
18in., 12in., 160mm, 128mm, 6in., 4in.,
96mm, and 3in. CC, knob



Some parts in this collection can be found in additional finishes from our other collections.
parts 1-5, 9 and Appliance Pulls • Hearthstone
part 8 • Andante
parts 11-14 • Forté
part 6, 15 • Euro Classica
part 7, 10 • Euro Moderno
part 16 • American Classics

	Part No.	CC	Product Type	Length	Width	Height/Projection	Diameter	Base	Tap	Price Code
	4154-1014-P	18in.	*Appliance Pull	19 1/4in.	1 1/2in.	1 5/8in.	-	1 3/8in.	10-24	E
	2036-1014-P	12in.	*Appliance Pull	13 3/8in.	3/4in.	1 13/16in.	-	1 1/2in.	10-24	E
1	2046-1014-P	160mm	Pull	7 5/8in.	5/8in.	1 1/2in.	-	7/8in.	8-32	D
2	2041-1014-P	128mm	Pull	6 1/2in.	1/2in.	1 7/8in.	-	7/8in.	8-32	D
3	4139-1014-P	3in.	Pull	3 1/2in.	3/8in.	1 3/8in.	-	1 3/8in.	8-32	B
4	4141-1014-P	6in.	Pull	7 3/8in.	1 1/2in.	1 11/16in.	-	1 1/2in.	8-32	D
5	4140-1014-P	96mm	Pull	4 13/16in.	3/8in.	1 3/8in.	-	7/8in.	8-32	B
6	4153-1014-P	96mm	Pull	4 3/8in.	1/2in.	1 3/8in.	-	5/8in.	8-32	E
7	4144-1014-P	96mm	Pull	5 1/2in.	5/8in.	1 9/16in.	-	7/8in.	8-32	B
8	4145-1014-P	-	Knob	-	-	1 5/8in.	1 3/8in.	1in.	8-32	B
9	4142-1014-P	-	Knob	1 9/16in.	1 1/2in.	1 1/2in.	-	1 3/8in.	8-32	B
10	4143-1014-P	-	Knob	-	-	1 1/2in.	1 1/2in.	1 1/2in.	8-32	A
11	4149-1014-P	6in.	Pull	6 5/8in.	1 1/2in.	1 7/8in.	-	5/8in.	8-32	E
12	4147-1014-P	4in.	Pull	4 3/8in.	1/2in.	1 1/2in.	-	3/8in.	8-32	C
13	4148-1014-P	3in.	Pull	3 1/2in.	1/2in.	1 5/8in.	-	3/8in.	8-32	A
14	4150-1014-P	-	Knob	-	-	1 5/8in.	1 1/4in.	1 1/2in.	8-32	C
15	4152-1014-P	-	Knob	-	-	1 1/2in.	1 3/8in.	1 1/2in.	8-32	D
16	4146-1014-P	3in.	Cup Pull	4 1/2in.	1 7/8in.	1 1/2in.	-	-	8-32	D

*Product not shown, please visit www.BerensonHardware.com to view images and details.



Dierdra

CLASSIC Comfort • Transitional
collection featured in oil rubbed bronze



Dierdra Available Finishes, Sizes & Part Numbers:



BRUSHED NICKEL

224mm CC	9564-1BPN-P
160mm CC	9562-1BPN-P
96mm CC	4056-1BPN-P
Knob	4061-1BPN-P



OIL RUBBED BRONZE

224mm CC	9566-1ORB-P
160mm CC	9565-1ORB-P
96mm CC	4060-1ORB-P
Knob	4071-1ORB-P



POLISHED NICKEL

224mm CC	9568-1014-P
160mm CC	9567-1014-P
96mm CC	4107-1014-P
Knob	4110-1014-P



VERONA BRONZE

224mm CC	9805-10VB-P
160mm CC	9569-10VB-P
96mm CC	4057-10VB-P
Knob	4062-10VB-P



VINTAGE NICKEL

224mm CC	9808-1VTN-P
160mm CC	9807-1VTN-P
96mm CC	9806-1VTN-P
Knob	9809-1VTN-P



WEATHERED NICKEL

224mm CC	9811-10WN-P
160mm CC	9810-10WN-P
96mm CC	4058-10WN-P
Knob	4065-10WN-P

CC	Product Type	Length	Width	Height/Projection	Diameter	Base	Tap	Price Code
224mm	Pull	9 ½in.	¾in.	1 ¾in.	-	½in.	8-32	D
160mm	Pull	6 1¼in.	¾in.	1 ½in.	-	½in.	8-32	D
96mm	Pull	4 ½in.	¾in.	1 ¾in.	-	¾in.	8-32	D
-	Knob	1 7/16in.	1in.	1 ¾in.	-	¾in.	8-32	B



Domestic Bliss™

CLASSIC Comfort • Transitional
collection featured in modern brushed gold



Domestic Bliss Available Finishes, Sizes & Part Numbers:



BRUSHED NICKEL

320mm CC	2356-1BPN-P
224mm CC	2352-1BPN-P
160mm CC	2348-1BPN-P
128mm CC	2343-1BPN-P
96mm CC	2339-1BPN-P
Knob	2360-1BPN-P



MATTE BLACK

320mm CC	Coming Summer 2021
224mm CC	Coming Summer 2021
160mm CC	2402-1055-P
128mm CC	2401-1055-P
96mm CC	2400-1055-P
Knob	2399-1055-P



MODERN BRUSHED GOLD

320mm CC	2359-1MDB-P
224mm CC	2355-1MDB-P
160mm CC	2351-1MDB-P
128mm CC	2347-1MDB-P
96mm CC	2342-1MDB-P
Knob	2363-1MDB-P



POLISHED NICKEL

320mm CC	2358-1014-P
224mm CC	2354-1014-P
160mm CC	2350-1014-P
128mm CC	2346-1014-P
96mm CC	2341-1014-P
Knob	2362-1014-P



SLATE

320mm CC	Coming Summer 2021
224mm CC	Coming Summer 2021
160mm CC	2406-1SLT-P
128mm CC	2405-1SLT-P
96mm CC	2404-1SLT-P
Knob	2403-1SLT-P



VERONA BRONZE

320mm CC	2357-10VB-P
224mm CC	2353-10VB-P
160mm CC	2349-10VB-P
128mm CC	2344-10VB-P
96mm CC	2340-10VB-P
Knob	2361-10VB-P

AVAILABLE SIZES:

320mm, 224mm, 160mm, 128mm, and 96mm CC, knob

Look for the flag for new lengths or finish(es).

CC	Product Type	Length	Width	Height/Projection	Diameter	Base	Tap	Price Code
320mm	*Pull	13 1/2 in.	1 in.	1 1/2 in.	-	1 1/2 in.	8-32	E
224mm	Pull	9 3/4 in.	1 1/2 in.	1 1/2 in.	-	1 1/2 in.	8-32	D
160mm	Pull	7 1/2 in.	3/4 in.	1 7/8 in.	-	7/8 in.	8-32	D
128mm	Pull	5 3/4 in.	5/8 in.	1 3/8 in.	-	3/4 in.	8-32	C
96mm	Pull	4 1/2 in.	5/8 in.	1 3/8 in.	-	3/4 in.	8-32	C
-	Knob	-	-	1 1/2 in.	1 3/4 in.	1 1/2 in.	8-32	B

*Product not shown, please visit www.BerensonHardware.com to view images and details.

Euro Moderno

CLASSIC *Comfort* • Transitional
collection featured in brushed nickel



CC	Product Type	Length	Width	Height/Projection	Diameter	Base	Tap	Price Code
96mm	Pull	5 1/4in.	5/8in.	1 5/16in.	-	7/8in.	8-32	B
64mm	Cup Pull	3 1/2in.	1 1/8in.	1 5/16in.	-	-	8-32	B
-	Knob	-	-	1 1/8in.	1 1/8in.	5/8in.	8-32	A

Euro Moderno Available Finishes, Sizes & Part Numbers:

BRUSHED ANTIQUE BRASS		BRUSHED ANTIQUE COPPER		BRUSHED BLACK NICKEL		BRUSHED NICKEL	
96mm CC	9721-1BAB-P	96mm CC	9719-1BAC-P	96mm CC	9720-1BBN-P	96mm CC	9718-1BPN-P
64mm CC	9713-1BAB-P	64mm CC	9711-1BAC-P	64mm CC	9712-1BBN-P	64mm CC	9710-1BPN-P
Knob	9724-1BAB-P	Knob	9722-1BAC-P	Knob	9723-1BBN-P	Knob	9913-1BPN-P

Forté

CLASSIC Comfort • Transitional
collection featured in weathered nickel



AVAILABLE SIZES:
18in., 6in., and 4in. CC, small & large knobs

CC	Product Type	Length	Width	Height/Projection	Diameter	Base	Tap	Price Code
18in.	*Appliance Pull	19in.	1 1/2in.	2 1/2in.	-	1in.	10-24	E
6in.	Pull	6 5/8in.	1 1/8in.	1 7/8in.	-	5/8in.	8-32	E
4in.	Pull	4 3/8in.	1/2in.	1 1/4in.	-	3/8in.	8-32	C
-	① Knob	-	-	1 3/4in.	1 1/8in.	3/4in.	8-32	E
-	② Knob	-	-	1 1/8in.	1 1/4in.	1 1/8in.	8-32	C

*Product not shown, please visit www.BerensonHardware.com to view images and details.

Forté Available Finishes, Sizes & Part Numbers:

BRUSHED NICKEL		OIL RUBBED BRONZE		VERONA BRONZE		WEATHERED NICKEL	
18in. CC	8297-1BPN-P	18in. CC	8299-1ORB-P	18in. CC	8298-1VB-P	18in. CC	8300-1WN-P
6in. CC	8267-1BPN-P	6in. CC	8269-1ORB-P	6in. CC	8268-1VB-P	6in. CC	8270-1WN-P
4in. CC	8273-1BPN-P	4in. CC	Not Available	4in. CC	8274-1VB-P	4in. CC	8276-1WN-P
① Knob	8279-1BPN-P	① Knob	8281-1ORB-P	① Knob	8280-1VB-P	① Knob	8282-1WN-P
② Knob	8285-1BPN-P	② Knob	8287-1ORB-P	② Knob	8286-1VB-P	② Knob	8288-1WN-P



Meadow®

CLASSIC Comfort • Transitional
collection featured in verona bronze



160mm CC



128mm CC



96mm CC



Knob
has tooth at bottom to help secure in position

AVAILABLE SIZES:

448mm, 320mm, 256mm, 160mm, 128mm and 96mm CC, knob

CC	Product Type	Length	Width	Height/Projection	Diameter	Base	Tap	Price Code
448mm	*Appliance Pull	19 1/4in.	2 5/8in.	1 1/4in.	-	1 1/2in.	10-24	E
320mm	*Pull	14 3/8in.	1 1/2in.	1 3/8in.	-	1/2in.	8-32	E
256mm	*Pull	11 1/4in.	1 1/2in.	1 3/8in.	-	1/2in.	8-32	D
160mm	Pull	7 7/8in.	1 1/2in.	1 3/8in.	-	1/2in.	8-32	D
128mm	Pull	6 5/8in.	1 1/2in.	1 3/8in.	-	1/2in.	8-32	D
96mm	Pull	5 7/8in.	1 1/2in.	1 3/8in.	-	1/2in.	8-32	C
-	Knob	1 3/4in.	1 1/2in.	1 1/4in.	-	1/2in.	8-32	C

*Product not shown, please visit www.BerensonHardware.com to view images and details.

Meadow Available Finishes, Sizes & Part Numbers:



BRUSHED NICKEL

448mm CC	2302-4BPN-P
320mm CC	2308-4BPN-P
256mm CC	2306-4BPN-P
160mm CC	2304-4BPN-P
128mm CC	2099-4BPN-P
96mm CC	2097-4BPN-P
Knob	2310-1BPN-P



GRAPHITE

448mm CC	2285-4GPH-P
320mm CC	2284-4GPH-P
256mm CC	2283-4GPH-P
160mm CC	2282-4GPH-P
128mm CC	2281-4GPH-P
96mm CC	2280-4GPH-P
Knob	2286-4GPH-P



MATTE BLACK

448mm CC	2292-4055-P
320mm CC	2291-4055-P
256mm CC	2290-4055-P
160mm CC	2289-4055-P
128mm CC	2288-4055-P
96mm CC	2287-4055-P
Knob	2293-4055-P



POLISHED CHROME

448mm CC	2299-4026-P
320mm CC	2298-4026-P
256mm CC	2297-4026-P
160mm CC	2296-4026-P
128mm CC	2295-4026-P
96mm CC	2294-4026-P
Knob	2300-4026-P



SATIN GOLD

448mm CC	2278-40SG-P
320mm CC	2277-40SG-P
256mm CC	2276-40SG-P
160mm CC	2275-40SG-P
128mm CC	2274-40SG-P
96mm CC	2273-40SG-P
Knob	2279-40SG-P



VERONA BRONZE

448mm CC	2301-40VB-P
320mm CC	2309-40VB-P
256mm CC	2307-40VB-P
160mm CC	2305-40VB-P
128mm CC	2303-40VB-P
96mm CC	2098-40VB-P
Knob	2311-10VB-P

Oasis

CLASSIC Comfort • Transitional
collection featured in brushed tin



CC	Product Type	Length	Width	Height/Projection	Diameter	Base	Tap	Price Code
160mm	Pull	7 5/16in.	1 3/16in.	1 1/4in.	-	1 1/2in.	8-32	C
128mm	Pull	6 1/4in.	1 3/16in.	1 1/4in.	-	1 1/2in.	8-32	C
96mm	Pull	4 7/8in.	1 3/16in.	1 1/8in.	-	1 1/2in.	8-32	C
-	Knob	-	-	1 1/4in.	1 1/4in.	5/8in.	8-32	A

Oasis Available Finishes, Sizes & Part Numbers:



BRUSHED NICKEL

160mm CC	9252-1BPN-P
128mm CC	9249-1BPN-P
96mm CC	9246-1BPN-P
Knob	9255-1BPN-P



BRUSHED TIN

160mm CC	9253-10BT-P
128mm CC	9250-10BT-P
96mm CC	9247-10BT-P
Knob	9256-10BT-P



OIL RUBBED BRONZE

160mm CC	9251-1ORB-P
128mm CC	9248-1ORB-P
96mm CC	9245-1ORB-P
Knob	9254-1ORB-P

Opus

CLASSIC Comfort • Transitional
collection featured in satin nickel



CC	Product Type	Length	Width	Height/Projection	Diameter	Base	Tap	Price Code
128mm	Pull	6 3/8in.	1 3/16in.	1 1/4in.	-	1 1/2in.	M4	E
96mm	Pull	5 1/2in.	5/8in.	1 7/8in.	-	5/8in.	M4	D
-	Knob	1 3/8in.	1 3/16in.	7/8in.	-	1/2in.	M4	D

Opus Available Finishes, Sizes & Part Numbers:



RUBBED BRONZE

128mm CC	7153-1010-C
96mm CC	7149-1010-C
Knob	7172-1010-C



RUSTIC TIN

128mm CC	7152-10RT-C
96mm CC	7148-10RT-C
Knob	7171-10RT-C



SATIN NICKEL

128mm CC	7151-1015-C
96mm CC	7147-1015-C
Knob	7170-1015-C



VERONA BRONZE

128mm CC	7154-10VB-P
96mm CC	7150-10VB-P
Knob	7173-10VB-P



Subtle Surge

CLASSIC Comfort • Transitional
collection featured in matte black



AVAILABLE SIZES:

18in., 12in., 224mm, 160mm, 128mm, and 96mm CC, knob

CC	Product Type	Length	Width	Height/Projection	Diameter	Base	Tap	Price Code
18in.	*Appliance Pull	18 7/16in.	2 5/16in.	2 3/16in.	-	1 1/2in.	10-24	E
12in.	*Appliance Pull	12 5/16in.	1 1/16in.	1 1/16in.	-	3/8in.	10-24	E
224mm	Pull	9 3/16in.	1/2in.	1 3/16in.	-	7/16in.	8-32	E
160mm	Pull	6 1 5/16in.	1 5/16in.	1 3/16in.	-	1 3/16in.	8-32	D
128mm	Pull	5 1/16in.	7/16in.	1 3/16in.	-	3/8in.	8-32	C
96mm	Pull	4 3/16in.	7/16in.	1 1/16in.	-	3/8in.	8-32	C
-	Knob	1 1/16in.	3/4in.	1 1/4in.	-	1/2in.	8-32	C

*Product not shown, please visit www.BerensonHardware.com to view images and details.

Subtle Surge Available Finishes, Sizes & Part Numbers:



BRUSHED NICKEL

18in. CC	1115-1BPN-P
12in. CC	1266-1BPN-P
224mm CC	1260-1BPN-P
160mm CC	1254-1BPN-P
128mm CC	1248-1BPN-P
96mm CC	1242-1BPN-P
Knob	1236-1BPN-P



MATTE BLACK

18in. CC	1119-1055-P
12in. CC	1269-1055-P
224mm CC	1263-1055-P
160mm CC	1257-1055-P
128mm CC	1251-1055-P
96mm CC	1245-1055-P
Knob	1239-1055-P



MODERN BRUSHED GOLD

18in. CC	1114-1MDB-P
12in. CC	1270-1MDB-P
224mm CC	1264-1MDB-P
160mm CC	1258-1MDB-P
128mm CC	1252-1MDB-P
96mm CC	1246-1MDB-P
Knob	1240-1MDB-P



POLISHED NICKEL

18in. CC	1116-1014-P
12in. CC	1268-1014-P
224mm CC	1262-1014-P
160mm CC	1256-1014-P
128mm CC	1250-1014-P
96mm CC	1244-1014-P
Knob	1238-1014-P



VERONA BRONZE

18in. CC	1117-10VB-P
12in. CC	1267-10VB-P
224mm CC	1261-10VB-P
160mm CC	1255-10VB-P
128mm CC	1249-10VB-P
96mm CC	1243-10VB-P
Knob	1237-10VB-P



VINTAGE NICKEL

18in. CC	1118-1VTN-P
12in. CC	1271-1VTN-P
224mm CC	1265-1VTN-P
160mm CC	1259-1VTN-P
128mm CC	1253-1VTN-P
96mm CC	1247-1VTN-P
Knob	1241-1VTN-P

Tempo

CLASSIC Comfort • Transitional
collection featured in brushed nickel



AVAILABLE SIZES IN A VARIETY OF FINISHES:

768mm, 640mm, 544mm, 448mm, 384mm, 320mm, 288mm, 256mm, 224mm, 192mm, 160mm, 128mm, 96mm, and 3in. CC, knob

CC	Product Type	Length	Width	Height/Projection	Diameter	Base	Tap	Price Code
768mm	*Pull	32 3/8in.	1/2in.	1 1/4in.	-	3/8in.	8-32	E
640mm	*Pull	27 1/8in.	1/2in.	1 1/4in.	-	3/8in.	8-32	E
544mm	*Pull	23 3/4in.	1/2in.	1 1/4in.	-	3/8in.	8-32	E
448mm	*Pull	20in.	1/2in.	1 1/4in.	-	3/8in.	8-32	D
384mm	*Pull	17 1/2in.	1/2in.	1 1/4in.	-	3/8in.	8-32	D
320mm	*Pull	15in.	1/2in.	1 1/4in.	-	3/8in.	8-32	D
288mm	*Pull	13 1/8in.	1/2in.	1 1/4in.	-	3/8in.	8-32	D
256mm	Pull	12 3/8in.	1/2in.	1 1/4in.	-	3/8in.	8-32	D
224mm	Pull	11 3/8in.	1/2in.	1 1/4in.	-	3/8in.	8-32	D
192mm	Pull	9 1/8in.	1/2in.	1 1/4in.	-	3/8in.	8-32	D
160mm	Pull	8 1/8in.	1/2in.	1 1/4in.	-	3/8in.	8-32	C
128mm	Pull	7 3/8in.	1/2in.	1 1/4in.	-	3/8in.	8-32	C
96mm	Pull	6 1/8in.	1/2in.	1 1/4in.	-	3/8in.	8-32	B
3in.	Pull	5 3/8in.	1/2in.	1 1/4in.	-	3/8in.	8-32	B
-	Knob	2in.	1/2in.	1 1/4in.	-	3/8in.	8-32	A

*Product not shown, please visit www.BerensonHardware.com to view images and details.

Turn to the next page for finish information and part numbers.

Tempo

CLASSIC Comfort • Transitional
continued from previous page

Tempo Available Finishes, Sizes & Part Numbers:



BLACK

768mm CC	Not Available
640mm CC	Not Available
544mm CC	Not Available
448mm CC	Not Available
384mm CC	Not Available
320mm CC	0838-2055-P
288mm CC	Not Available
256mm CC	0836-2055-P
224mm CC	0835-2055-P
192mm CC	0834-2055-P
160mm CC	0833-2055-P
128mm CC	0832-2055-P
96mm CC	0831-2055-P
3in. CC	0830-2055-P
Knob	0839-2055-P



BRUSHED NICKEL

768mm CC	1133-2BPN-P
640mm CC	1132-2BPN-P
544mm CC	1131-2BPN-P
448mm CC	1130-2BPN-P
384mm CC	1129-2BPN-P
320mm CC	0810-2BPN-P
288mm CC	1128-2BPN-P
256mm CC	0808-2BPN-P
224mm CC	1127-2BPN-P
192mm CC	0806-2BPN-P
160mm CC	1126-2BPN-P
128mm CC	0804-2BPN-P
96mm CC	0802-2BPN-P
3in. CC	0800-2BPN-P
Knob	2020-2BPN-P



MODERN BRUSHED GOLD

768mm CC	Not Available
640mm CC	Not Available
544mm CC	Not Available
448mm CC	Not Available
384mm CC	Not Available
320mm CC	0828-2MDB-P
288mm CC	Not Available
256mm CC	0826-2MDB-P
224mm CC	0825-2MDB-P
192mm CC	0824-2MDB-P
160mm CC	0823-2MDB-P
128mm CC	0822-2MDB-P
96mm CC	0821-2MDB-P
3in. CC	0820-2MDB-P
Knob	0829-2MDB-P



POLISHED CHROME

768mm CC	Not Available
640mm CC	Not Available
544mm CC	Not Available
448mm CC	Not Available
384mm CC	Not Available
320mm CC	2006-2026-P
288mm CC	Not Available
256mm CC	2017-2026-P
224mm CC	2016-2026-P
192mm CC	2015-2026-P
160mm CC	2028-2026-P
128mm CC	2014-2026-P
96mm CC	2013-2026-P
3in. CC	2012-2026-P
Knob	2019-2026-P



VERONA BRONZE

768mm CC	Not Available
640mm CC	Not Available
544mm CC	Not Available
448mm CC	Not Available
384mm CC	Not Available
320mm CC	0811-20VB-P
288mm CC	Not Available
256mm CC	0809-20VB-P
224mm CC	0813-20VB-P
192mm CC	0807-20VB-P
160mm CC	0812-20VB-P
128mm CC	0805-20VB-P
96mm CC	0803-20VB-P
3in. CC	0801-20VB-P
Knob	2018-20VB-P



Valencia

CLASSIC Comfort • Transitional
collection featured in polished chrome & matte black



	CC	Product Type	Length	Width	Height/Projection	Diameter	Base	Tap	Price Code
1	96mm	Pull	4 1/16in.	1 3/16in.	1in.	-	1 1/4in.	M4	D
2	96mm	Pull	4 7/16in.	1/2in.	1 3/16in.	-	7/16in.	M4	D
3	-	Knob	-	-	1in.	1 3/16in.	1 1/4in.	M4	D
4	-	Knob	-	-	7/16in.	1 3/16in.	1 3/16in.	M4	D
5	-	Knob	1 3/16in.	3/4in.	1 3/16in.	-	9/16in.	M4	C
6	-	Knob	-	-	1 1/16in.	1 1/4in.	5/16in.	8-32	B

Valencia Available Finishes, Sizes & Part Numbers:

Berenson Extreme Finish hardware exceeds BHMA standards by up to 10x!



BRUSHED BRONZE		BRUSHED NICKEL		MATTE BLACK		POLISHED CHROME	
① 96mm CC	7004-1BBZ-C*	① 96mm CC	7001-1BPN-P	① 96mm CC	Not Available	① 96mm CC	7002-126-C
② 96mm CC	Not Available	② 96mm CC	7016-1BPN-P	② 96mm CC	7018-155-C	② 96mm CC	7017-126-C
③ Knob	7009-1BBZ-C	③ Knob	7006-1BPN-P	③ Knob	Not Available	③ Knob	7007-126-C
④ Knob	7014-1BBZ-C	④ Knob	7011-1BPN-C	④ Knob	Not Available	④ Knob	7012-126-C*
⑤ Knob	Not Available	⑤ Knob	7021-1BPN-P*	⑤ Knob	7023-155-C	⑤ Knob	7022-126-C
⑥ Knob	Not Available	⑥ Knob	Not Available	⑥ Knob	8089-155-P	⑥ Knob	Not Available

*available at price code E

*available at price code D

*available at price code C

Virtuoso

CLASSIC Comfort • Transitional
collection featured in verona bronze



	CC	Product Type	Length	Width	Height/Projection	Diameter	Base	Tap	Price Code
1	128mm	Pull	6 3/16in.	1 3/16in.	1 5/16in.	-	3/8in.	M4	E
2	96mm	Pull	5in.	5/8in.	1 5/16in.	-	3/8in.	M4	D
3	-	Knob	1 3/16in.	1 3/16in.	1in.	-	3/8in.	M4	D
4	-	Knob	1 1/16in.	1 1/16in.	7/16in.	-	3/8in.	M4	D

Virtuoso Available Finishes, Sizes & Part Numbers:

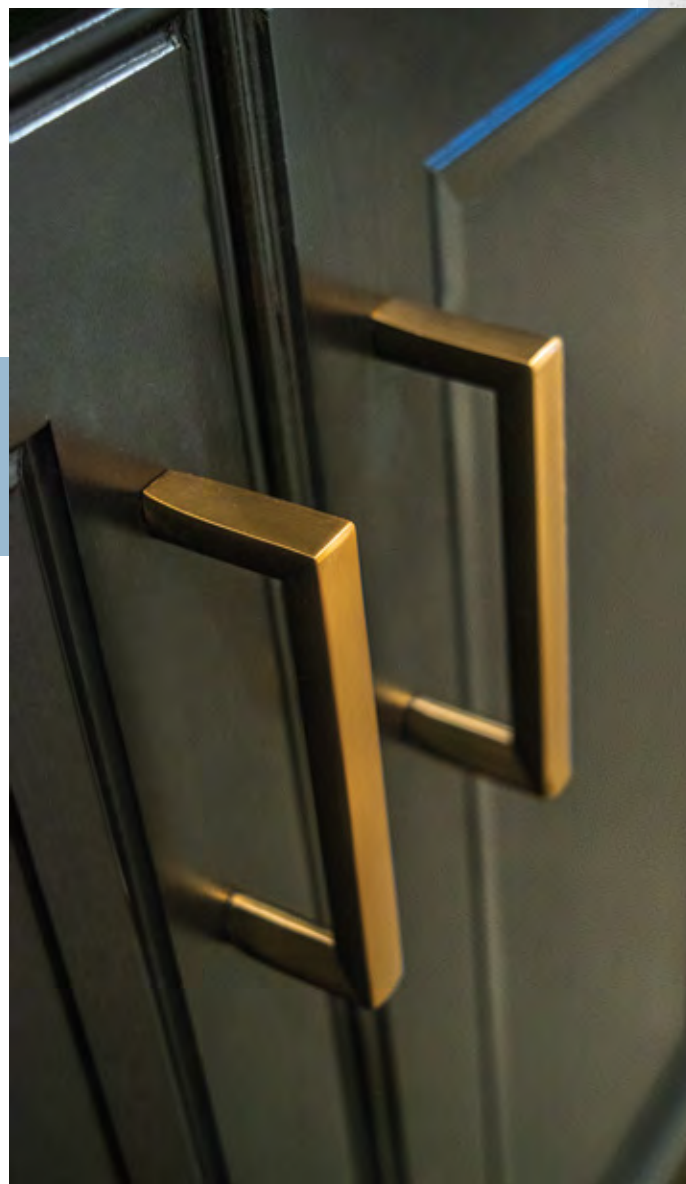


RUBBED BRONZE		RUSTIC TIN		SATIN NICKEL		VERONA BRONZE	
128mm CC	7137-1010-C	128mm CC	7136-10RT-C	128mm CC	7135-1015-C	128mm CC	7138-10VB-P
96mm CC	7133-1010-C	96mm CC	7132-10RT-C	96mm CC	7131-1015-C	96mm CC	7134-10VB-P*
③ Knob	7145-1010-C	③ Knob	7144-10RT-C	③ Knob	7143-1015-C	③ Knob	7146-10VB-P
④ Knob	7141-1010-C*	④ Knob	7140-10RT-C	④ Knob	7139-1015-C	④ Knob	7142-10VB-P

*available at price code C

*available at price code E

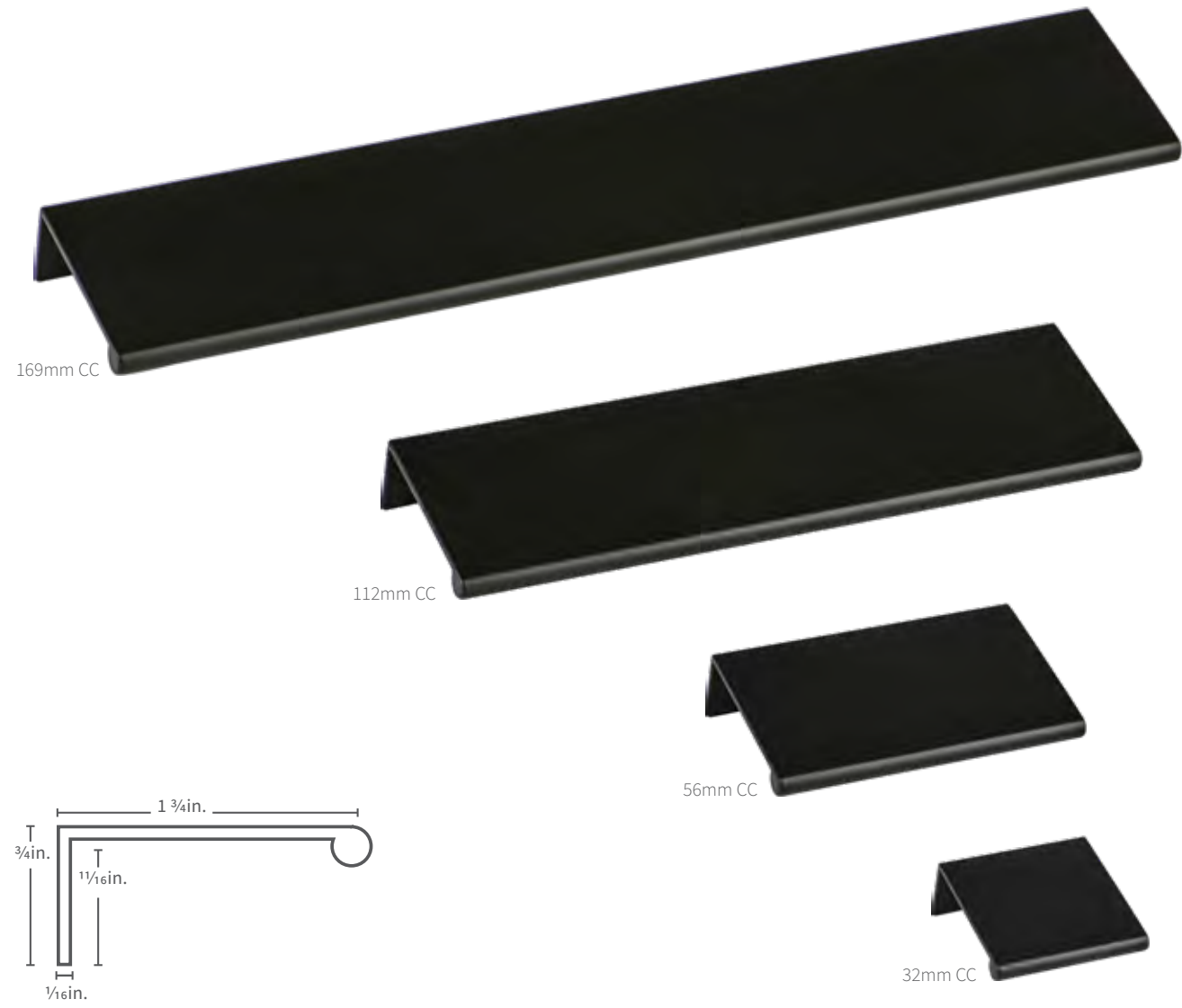
UPTOWN appeal



The Uptown Appeal Series reflects uncluttered aesthetic, with functional and minimalist cabinet hardware designs.

Bravo

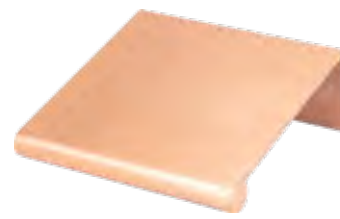
UPTOWN Appeal • Contemporary
collection featured in satin black



Look for the flag for new lengths or finish(es).

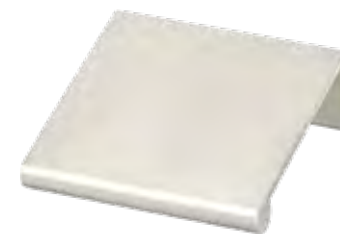
CC	Product Type	Length	Width	Height/Projection	Diameter	Base	Tap	Price Code
169mm	Edge Pull	9 7/16 in.	3/4 in.	1 3/4 in.	-	1 1/16 in.	-	D
112mm	Edge Pull	6 in.	3/4 in.	1 3/4 in.	-	1 1/16 in.	-	D
56mm	Edge Pull	3 in.	3/4 in.	1 3/4 in.	-	1 1/16 in.	-	C
32mm	Edge Pull	1 3/4 in.	3/4 in.	1 3/4 in.	-	1 1/16 in.	-	B

Bravo Available Finishes, Sizes & Part Numbers:



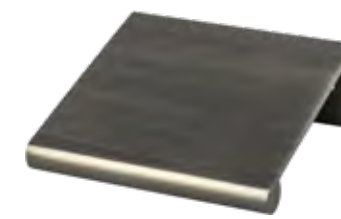
BRUSHED COPPER

169mm CC	1049-40BC-P
112mm CC	1048-40BC-P
56mm CC	1047-40BC-P
32mm CC	1046-40BC-P



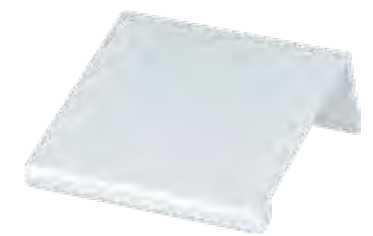
BRUSHED NICKEL

169mm CC	1065-4BPN-P
112mm CC	1061-4BPN-P
56mm CC	1057-4BPN-P
32mm CC	1052-4BPN-P



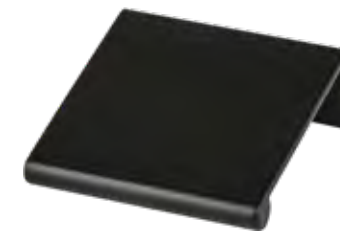
GRAPHITE

169mm CC	1076-4GPH-P
112mm CC	1075-4GPH-P
56mm CC	1074-4GPH-P
32mm CC	1073-4GPH-P



POLISHED CHROME

169mm CC	1066-4026-P
112mm CC	1062-4026-P
56mm CC	1058-4026-P
32mm CC	1053-4026-P



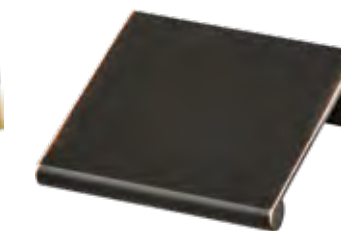
SATIN BLACK

169mm CC	1068-4055-P
112mm CC	1064-4055-P
56mm CC	1060-4055-P
32mm CC	1056-4055-P



SATIN GOLD

169mm CC	1072-40SG-P
112mm CC	1071-40SG-P
56mm CC	1070-40SG-P
32mm CC	1069-40SG-P



VERONA BRONZE

169mm CC	1067-40VB-P
112mm CC	1063-40VB-P
56mm CC	1059-40VB-P
32mm CC	1055-40VB-P

Aluminum Edge Pull
Also Available
(1051-4ALU-B)

Pull measures 96 7/16 in.
long and is made for you
to cut down to your
required size.

Price code E.





AVAILABLE SIZES:

18in., 320mm, 256mm, 160mm, 128mm, and 96mm CC,
small & large knobs

Look for the flag for new lengths or finish(es).

CC	Product Type	Length	Width	Height/ Projection	Diameter	Base	Tap	Price Code
18in.	*Appliance Pull	19 3/16in.	1 3/16in.	2in.	-	1 3/16in.	10-24	E
**320mm	*Pull	13 1/8in.	3/4in.	1 1/8in.	-	9/16in.	8-32	E
256mm	Pull	10 5/16in.	3/4in.	1 1/8in.	-	9/16in.	8-32	D
160mm	Pull	6 13/16in.	3/4in.	1 1/8in.	-	9/16in.	8-32	D
128mm	Pull	5 5/16in.	3/4in.	1 1/8in.	-	9/16in.	8-32	C
96mm	Pull	4 5/16in.	3/4in.	1 1/8in.	-	9/16in.	8-32	C
-	1 Knob	1 9/16in.	1 9/16in.	1 1/8in.	-	1 9/16in.	8-32	C
-	2 Knob	1 3/8in.	1 3/8in.	7/8in.	-	1 9/32in.	8-32	C

*Product not shown, please visit www.BerensonHardware.com to view images and details.

**Please Note: these parts are currently 8-32 tap and will be transitioning to 10-24 tap.
Please check our website for the most up to date information.

Elevate Available Finishes, Sizes & Part Numbers:



BRUSHED NICKEL

18in. CC	2101-4BPN-P
320mm CC	2093-4BPN-P
256mm CC	2091-4BPN-P
160mm CC	2089-4BPN-P
128mm CC	2087-4BPN-P
96mm CC	2085-4BPN-P
1 Knob	2095-4BPN-P
2 Knob	2172-1BPN-P



GRAPHITE

18in. CC	2114-4GPH-P
320mm CC	2113-4GPH-P
256mm CC	2112-4GPH-P
160mm CC	2111-4GPH-P
128mm CC	2110-4GPH-P
96mm CC	2109-4GPH-P
1 Knob	2115-4GPH-P
2 Knob	2174-1GPH-P



MATTE BLACK

18in. CC	2121-4055-P
320mm CC	2120-4055-P
256mm CC	2119-4055-P
160mm CC	2118-4055-P
128mm CC	2117-4055-P
96mm CC	2116-4055-P
1 Knob	2122-4055-P
2 Knob	2175-1055-P



POLISHED CHROME

18in. CC	2128-4026-P
320mm CC	2127-4026-P
256mm CC	2126-4026-P
160mm CC	2125-4026-P
128mm CC	2124-4026-P
96mm CC	2123-4026-P
1 Knob	2129-4026-P
2 Knob	2176-1026-P



SATIN GOLD

18in. CC	2107-40SG-P
320mm CC	2106-40SG-P
256mm CC	2105-40SG-P
160mm CC	2104-40SG-P
128mm CC	2103-40SG-P
96mm CC	2102-40SG-P
1 Knob	2108-40SG-P
2 Knob	2173-10SG-P

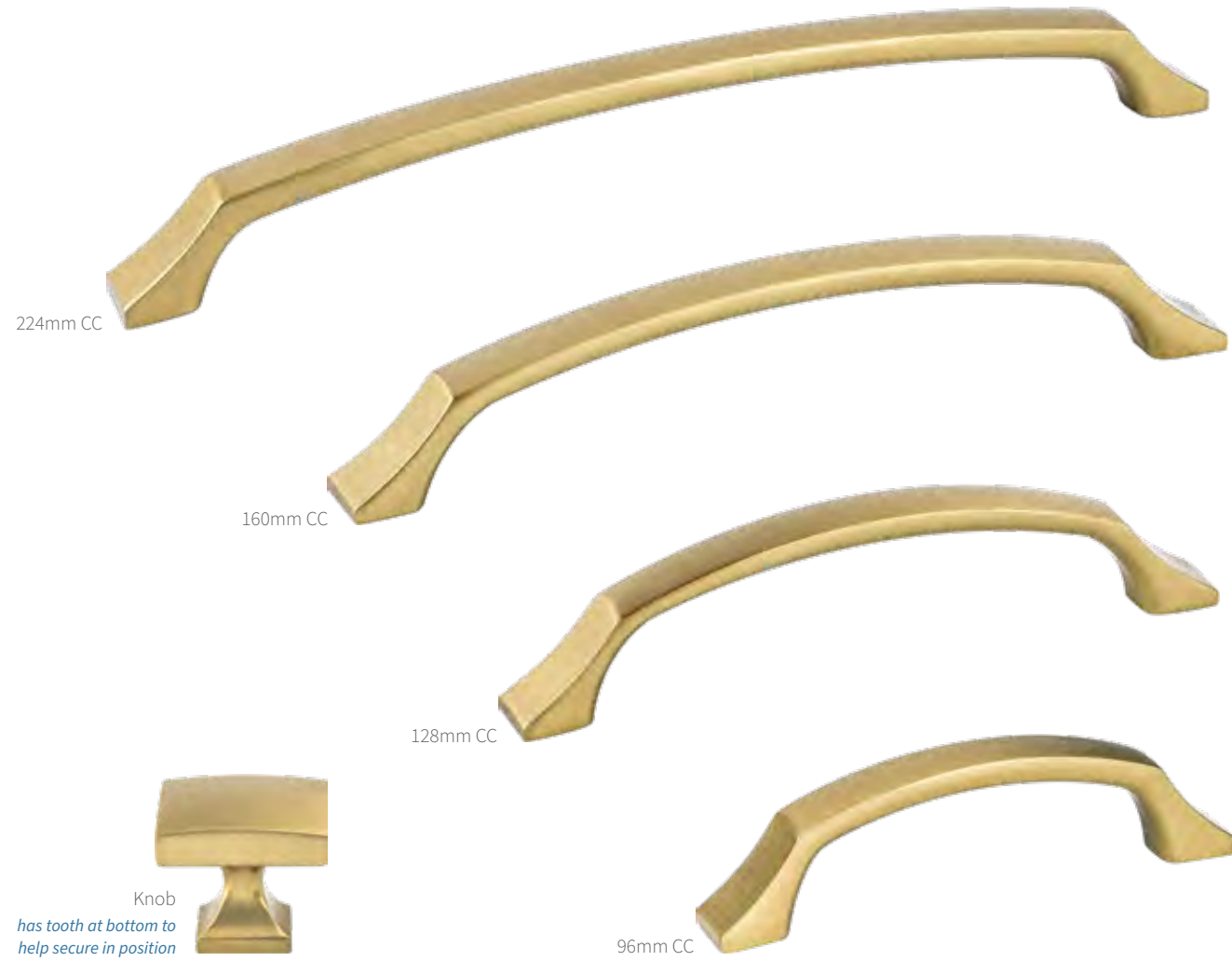


VERONA BRONZE

18in. CC	2100-40VB-P
320mm CC	2094-40VB-P
256mm CC	2092-40VB-P
160mm CC	2090-40VB-P
128mm CC	2088-40VB-P
96mm CC	2086-40VB-P
1 Knob	2096-40VB-P
2 Knob	2177-10VB-P

Epoch Edge

UPTOWN Appeal • Contemporary collection featured in modern brushed gold



AVAILABLE SIZES:

12in., 224mm, 160mm, 128mm, and 96mm CC, knob

CC	Product Type	Length	Width	Height/Projection	Diameter	Base	Tap	Price Code
12in.	*Appliance Pull	12 7/8in.	7/8in.	1 1/4in.	-	1in.	10-24	E
224mm	Pull	9 1/2in.	1 1/8in.	1 3/8in.	-	1 1/8in.	8-32	D
160mm	Pull	7 1/8in.	5/8in.	1 5/8in.	-	5/8in.	8-32	D
128mm	Pull	5 1/4in.	5/8in.	1 5/8in.	-	5/8in.	8-32	C
96mm	Pull	4 7/8in.	5/8in.	1 3/8in.	-	5/8in.	8-32	C
-	Knob	1 3/8in.	1 1/8in.	1 1/4in.	-	5/8in.	8-32	B

*Product not shown, please visit www.BerensonHardware.com to view images and details.

Epoch Edge Available Finishes, Sizes & Part Numbers:



BRUSHED NICKEL

12in. CC	1230-1BPN-P
224mm CC	1224-1BPN-P
160mm CC	1218-1BPN-P
128mm CC	1212-1BPN-P
96mm CC	1206-1BPN-P
Knob	1200-1BPN-P



MATTE BLACK

12in. CC	1233-1055-P
224mm CC	1227-1055-P
160mm CC	1221-1055-P
128mm CC	1215-1055-P
96mm CC	1209-1055-P
Knob	1203-1055-P



MODERN BRUSHED GOLD

12in. CC	1234-1MDB-P
224mm CC	1228-1MDB-P
160mm CC	1222-1MDB-P
128mm CC	1216-1MDB-P
96mm CC	1210-1MDB-P
Knob	1204-1MDB-P



POLISHED CHROME

12in. CC	1232-1026-P
224mm CC	1226-1026-P
160mm CC	1220-1026-P
128mm CC	1214-1026-P
96mm CC	1208-1026-P
Knob	1202-1026-P



VERONA BRONZE

12in. CC	1231-10VB-P
224mm CC	1225-10VB-P
160mm CC	1219-10VB-P
128mm CC	1213-10VB-P
96mm CC	1207-10VB-P
Knob	1201-10VB-P



VINTAGE NICKEL

12in. CC	1235-1VTN-P
224mm CC	1229-1VTN-P
160mm CC	1223-1VTN-P
128mm CC	1217-1VTN-P
96mm CC	1211-1VTN-P
Knob	1205-1VTN-P

Fluidic

UPTOWN Appeal • Contemporary
collection featured in brushed nickel



CC	Product Type	Length	Width	Height/Projection	Diameter	Base	Tap	Price Code
128mm	Pull	6 1/4in.	1 3/16in.	1 1/2in.	-	7/16in.	8-32	D
96mm	Pull	4 1/4in.	1 3/16in.	1 1/2in.	-	7/16in.	8-32	D
-	Knob	1 3/4in.	1 1/2in.	1 1/2in.	-	1 1/8in.	8-32	B

Fluidic Available Finishes, Sizes & Part Numbers:



BLACK

128mm CC	9440-1055-P
96mm CC	9439-1055-P
Knob	9441-1055-P

BRUSHED NICKEL

128mm CC	9478-1BPN-P
96mm CC	9476-1BPN-P
Knob	9480-1BPN-P

POLISHED CHROME

128mm CC	9477-1026-P
96mm CC	9475-1026-P
Knob	9479-1026-P

Laura

UPTOWN Appeal • Contemporary
collection featured in modern brushed gold



CC	Product Type	Length	Width	Height/Projection	Diameter	Base	Tap	Price Code
224mm	Pull	9 3/4in.	1 3/16in.	1 3/8in.	-	5/16in.	8-32	E
160mm	Pull	7 7/8in.	1 3/16in.	1 1/2in.	-	5/16in.	8-32	D
128mm	Pull	6in.	7/8in.	1in.	-	5/16in.	8-32	D
96mm	Pull	4 7/8in.	7/8in.	1in.	-	5/16in.	8-32	C
-	Knob	1 7/8in.	1in.	1in.	-	7/16in.	8-32	B

Laura Available Finishes, Sizes & Part Numbers:



BRUSHED NICKEL

224mm CC	9813-1BPN-P
160mm CC	9812-1BPN-P
128mm CC	4077-1BPN-P
96mm CC	4072-1BPN-P
Knob	4088-1BPN-P

MODERN BRUSHED GOLD

224mm CC	9817-1MDB-P
160mm CC	9816-1MDB-P
128mm CC	9815-1MDB-P
96mm CC	9814-1MDB-P
Knob	9818-1MDB-P

POLISHED CHROME

224mm CC	9820-1026-P
160mm CC	9819-1026-P
128mm CC	4087-1026-P
96mm CC	4084-1026-P
Knob	4090-1026-P

VINTAGE NICKEL

224mm CC	9824-1VTN-P
160mm CC	9823-1VTN-P
128mm CC	9822-1VTN-P
96mm CC	9821-1VTN-P
Knob	9827-1VTN-P



Metro

UPTOWN Appeal • Contemporary
collection featured in matte black



Metro Available Finishes, Sizes & Part Numbers:



BRUSHED NICKEL

18in. CC	9860-1BPN-P
320mm CC	9857-1BPN-P
224mm CC	9828-1BPN-P
160mm CC	4118-1BPN-P
128mm CC	4113-1BPN-P
96mm CC	4108-1BPN-P
Knob	4122-1BPN-P



MATTE BLACK

18in. CC	9861-1055-P
320mm CC	9859-1055-P
224mm CC	9858-1055-P
160mm CC	4121-1055-P
128mm CC	4116-1055-P
96mm CC	4111-1055-P
Knob	4126-1055-P



MODERN BRUSHED GOLD

18in. CC	9912-1MDB-P
320mm CC	9902-1MDB-P
224mm CC	9901-1MDB-P
160mm CC	9899-1MDB-P
128mm CC	9898-1MDB-P
96mm CC	9897-1MDB-P
Knob	9903-1MDB-P



POLISHED CHROME

18in. CC	9916-1026-P
320mm CC	9905-1026-P
224mm CC	9904-1026-P
160mm CC	4119-1026-P
128mm CC	4114-1026-P
96mm CC	4109-1026-P
Knob	4124-1026-P



POLISHED COPPER

18in. CC	Not Available
320mm CC	4184-10PC-P
224mm CC	4183-10PC-P
160mm CC	4182-10PC-P
128mm CC	4181-10PC-P
96mm CC	4180-10PC-P
Knob	4185-10PC-P



SLATE

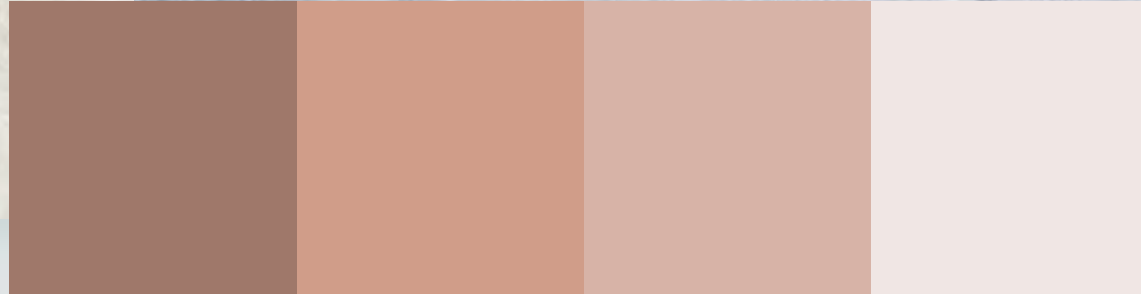
18in. CC	9973-1SLT-P
320mm CC	9970-1SLT-P
224mm CC	9909-1SLT-P
160mm CC	9908-1SLT-P
128mm CC	9907-1SLT-P
96mm CC	9906-1SLT-P
Knob	9971-1SLT-P

AVAILABLE SIZES:

18in., 320mm, 224mm, 160mm, 128mm, and 96mm CC, knob

CC	Product Type	Length	Width	Height/Projection	Diameter	Base	Tap	Price Code
18in.	*Appliance Pull	18 1/4in.	1 1/4in.	2 3/4in.	-	2 3/4in.	10-24	E
320mm	*Pull	13in.	7/8in.	1 3/8in.	-	3/8in.	8-32	E
224mm	Pull	9 1/4in.	7/8in.	1 3/8in.	-	3/8in.	8-32	D
160mm	Pull	6 1 1/8in.	7/8in.	1 3/8in.	-	3/8in.	8-32	C
128mm	Pull	5 7/8in.	7/8in.	1 3/8in.	-	3/8in.	8-32	C
96mm	Pull	4 3/4in.	7/8in.	1 3/8in.	-	3/8in.	8-32	B
-	Knob	1 3/8in.	1 3/8in.	1 1/4in.	-	5/8in.	8-32	A

*Product not shown, please visit www.BerensonHardware.com to view images and details.



Skyline

UPTOWN Appeal • Contemporary collection featured in slate



Skyline Available Finishes, Sizes & Part Numbers:



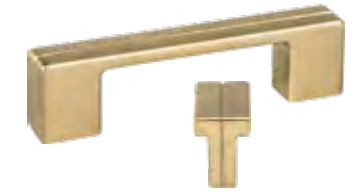
BRUSHED NICKEL

320mm CC	9974-1BPN-P
224mm CC	9206-1BPN-P
160mm CC	9203-1BPN-P
3in. & 96mm CC	9200-1BPN-P
Knob	9209-1BPN-P



MATTE BLACK

320mm CC	9975-1055-P
224mm CC	9208-1055-P
160mm CC	9205-1055-P
3in. & 96mm CC	9202-1055-P
Knob	9211-1055-P



MODERN BRUSHED GOLD

320mm CC	9993-1MDB-P
224mm CC	9978-1MDB-P
160mm CC	9977-1MDB-P
3in. & 96mm CC	9976-1MDB-P
Knob	9995-1MDB-P



POLISHED CHROME

320mm CC	1120-1026-P
224mm CC	9207-1026-P
160mm CC	9204-1026-P
3in. & 96mm CC	9201-1026-P
Knob	9210-1026-P



SLATE

320mm CC	1124-1SLT-P
224mm CC	1123-1SLT-P
160mm CC	1122-1SLT-P
3in. & 96mm CC	1121-1SLT-P
Knob	1125-1SLT-P

AVAILABLE SIZES:

320mm, 224mm, 160mm, and 3in. & 96mm CC, knob

CC	Product Type	Length	Width	Height/Projection	Diameter	Base	Tap	Price Code
320mm	*Pull	13in.	5/8in.	1 1/4in.	-	1 3/8in.	8-32	E
224mm	Pull	9 1/4in.	5/8in.	1 1/4in.	-	1 3/8in.	8-32	D
160mm	Pull	6 11/16in.	5/8in.	1 1/4in.	-	1in.	8-32	D
3in. & 96mm	Pull	4 3/4in.	5/8in.	1 1/4in.	-	1 1/8in.	8-32	C
-	Knob	1 3/8in.	3/4in.	1 1/4in.	-	3/8in.	8-32	B

*Product not shown, please visit www.BerensonHardware.com to view images and details.

Stainless Steel

UPTOWN Appeal • Contemporary
collection only available in stainless steel



AVAILABLE SIZES:
672mm, 448mm, 384mm, 288mm, 224mm, 160mm,
128mm, and 96mm, small & large knobs

GRADE 304

	Part No.	CC	Product Type	Length	Width	Height/ Projection	Diameter	Base	Tap	Price Code
	7067-9SS-C	672mm	*Pull	28 3/8in.	1/2in.	1 1/4in.	-	1/2in.	M4	E
	7073-9SS-C	448mm	*Pull	19 1/2in.	1/2in.	1 1/4in.	-	1/2in.	M4	E
	7072-9SS-C	384mm	*Pull	17 1/2in.	1/2in.	1 1/4in.	-	1/2in.	M4	E
	7071-9SS-C	288mm	*Pull	13 3/4in.	1/2in.	1 1/4in.	-	1/2in.	M4	E
	7077-9SS-C	288mm	*Pull	11 3/4in.	3/8in.	1 3/8in.	-	3/8in.	M4	E
1	7076-9SS-C	128mm	Pull	5 1/8in.	3/8in.	1 3/8in.	-	3/8in.	M4	E
2	7074-9SS-C	96mm	Pull	4 1/8in.	5/8in.	1 1/8in.	-	5/8in.	M4	D
3	7075-9SS-C	96mm	Pull	4 3/8in.	3/8in.	1 3/8in.	-	3/8in.	M4	D
4	7078-9SS-C	-	Knob	-	-	1 1/4in.	1 3/8in.	3/8in.	M4	E
5	7079-9SS-C	-	Knob	-	-	1 1/4in.	1in.	7/8in.	M4	E
6	7070-9SS-C	224mm	Pull	10 1/2in.	1/2in.	1 1/4in.	-	1/2in.	M4	E
7	7069-9SS-C	160mm	Pull	8 1/4in.	1/2in.	1 1/4in.	-	1/2in.	M4	E
8	7068-9SS-C	128mm	Pull	7in.	1/2in.	1 1/4in.	-	1/2in.	M4	E

*Product not shown, please visit www.BerensonHardware.com to view images and details.



Studio

UPTOWN Appeal • Contemporary
collection only available in stainless steel



AVAILABLE SIZES:
576mm, 288mm, 256mm, 224mm, 192mm,
160mm, and 128mm CC

CC	Part No.	Product Type	Length	Width	Height/ Projection	Diameter	Base	Tap	Price Code
576mm	2027-90SS-P	*Pull	23 1/4in.	1 1/2in.	1 1/4in.	-	7/8in.	8-32	D
288mm	2026-90SS-P	*Pull	11 1/2in.	1 1/2in.	1 1/4in.	-	7/8in.	8-32	D
256mm	2025-90SS-P	Pull	10 1/4in.	1 1/2in.	1 1/4in.	-	7/8in.	8-32	D
224mm	2024-90SS-P	Pull	9 3/4in.	1 1/2in.	1 1/4in.	-	7/8in.	8-32	D
192mm	2023-90SS-P	Pull	8 1/2in.	1 1/2in.	1 1/4in.	-	7/8in.	8-32	D
160mm	2022-90SS-P	Pull	6 3/4in.	1 1/2in.	1 1/4in.	-	7/8in.	8-32	D
128mm	2021-90SS-P	Pull	5 1/4in.	1 1/2in.	1 1/4in.	-	7/8in.	8-32	D

*Product not shown, please visit www.BerensonHardware.com to view images and details.

CC = center to center | images of parts are not shown at 100% scale

UPTOWN Appeal • Contemporary
collection featured in modern brushed gold



AVAILABLE SIZES:

320mm, 224mm, 160mm, 128mm and 96mm CC, knob

Look for the flag for new lengths or finish(es).

CC	Product Type	Length	Width	Height/Projection	Diameter	Base	Tap	Price Code
320mm	*Pull	13 1/16in.	5/8in.	1 1/4in.	-	1/2in.	8-32	E
224mm	Pull	9 5/16in.	5/8in.	1 1/4in.	-	1/2in.	8-32	D
160mm	Pull	6 3/8in.	5/8in.	1 1/4in.	-	1/2in.	8-32	D
128mm	Pull	5 1/2in.	5/8in.	1 1/4in.	-	1/2in.	8-32	C
96mm	Pull	4 3/8in.	5/8in.	1 1/4in.	-	1/2in.	8-32	C
-	Knob	1 3/8in.	1 3/8in.	1 1/4in.	-	7/8in.	8-32	B

*Product not shown, please visit www.BerensonHardware.com to view images and details.

Swagger Available Finishes, Sizes & Part Numbers:



BLACK NICKEL

320mm CC	2323-1098-P
224mm CC	2320-1098-P
160mm CC	2317-1098-P
128mm CC	2314-1098-P
96mm CC	2385-1098-P
Knob	2326-1098-P



BRUSHED NICKEL

320mm CC	2321-1BPN-P
224mm CC	2318-1BPN-P
160mm CC	2315-1BPN-P
128mm CC	2312-1BPN-P
96mm CC	2386-1BPN-P
Knob	2324-1BPN-P



MATTE BLACK

320mm CC	Coming Summer 2021
224mm CC	2398-1055-P
160mm CC	2397-1055-P
128mm CC	2396-1055-P
96mm CC	2395-1055-P
Knob	2394-1055-P



MODERN BRUSHED GOLD

320mm CC	2367-1MDB-P
224mm CC	2366-1MDB-P
160mm CC	2365-1MDB-P
128mm CC	2364-1MDB-P
96mm CC	2387-1MDB-P
Knob	2368-1MDB-P



POLISHED CHROME

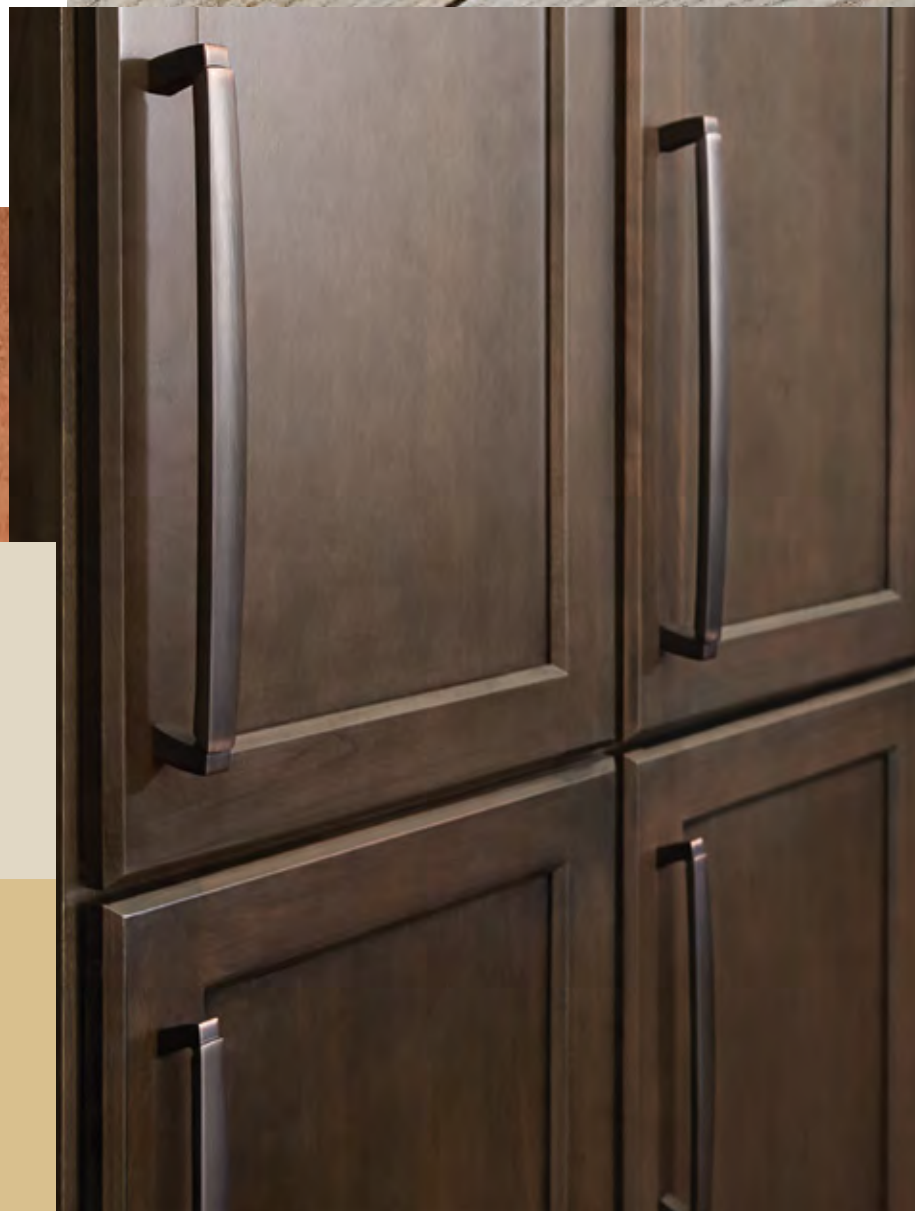
320mm CC	2322-1026-P
224mm CC	2319-1026-P
160mm CC	2316-1026-P
128mm CC	2313-1026-P
96mm CC	2388-1026-P
Knob	2325-1026-P



SLATE

320mm CC	Coming Summer 2021
224mm CC	2393-1SLT-P
160mm CC	2392-1SLT-P
128mm CC	2391-1SLT-P
96mm CC	2390-1SLT-P
Knob	2389-1SLT-P

TIMELESS CHARM



The Timeless Charm Series honors comfortable spaces, where pieces match and have warm inviting colors. The traditional cabinet hardware here will complement these designs and are a perfect touch for raised panel cabinets.



AMERICAN CLASSICS

TIMELESS CHARM • TRADITIONAL
collection featured in rubbed bronze



	CC	Product Type	Length	Width	Height/ Projection	Diameter	Base	Tap	Price Code
1	3in.	Pull	3 1/4in.	3/4in.	1 1/4in.	-	3/8in.	8-32	B
2	3in.	Cup Pull	4 1/4in.	1 7/8in.	1 5/8in.	-	-	8-32	D
3	-	Knob	1 5/8in.	7/8in.	1 1/4in.	-	3/8in.	8-32	C
4	-	Knob	-	-	1 1/4in.	1 1/4in.	3/8in.	8-32	C
5	-	Knob	-	-	1in.	1 1/8in.	3/8in.	8-32	B

American Classics Available Finishes, Sizes & Part Numbers:



BRUSHED NICKEL

3in. CC Pull	9886-1BPN-P*
3in. CC Cup Pull	9896-1BPN-P
③ Knob	9937-1BPN-P
④ Knob	9079-1BPN-P**
⑤ Knob	9924-1BPN-P

*available at price code C
**available at price code B



DULL RUST

3in. CC Pull	9887-1FE-P*
3in. CC Cup Pull	9892-1FE-P
③ Knob	9934-1FE-P*
④ Knob	2055-1FE-P*
⑤ Knob	Not Available

*available at price code D



RUBBED BRONZE

3in. CC Pull	9885-110-P
3in. CC Cup Pull	9890-110-P
③ Knob	9933-110-P
④ Knob	9938-110-P
⑤ Knob	9923-110-P



WEATHERED COPPER

3in. CC Pull	9889-1WC-P
3in. CC Cup Pull	9893-1WC-P
③ Knob	9935-1WC-P
④ Knob	9941-1WC-P
⑤ Knob	9925-1WC-P



WEATHERED NICKEL

3in. CC Pull	9888-1WN-P
3in. CC Cup Pull	9895-1WN-P
③ Knob	9936-1WN-P
④ Knob	9942-1WN-P
⑤ Knob	9927-1WN-P



ANDANTE

TIMELESS CHARM • TRADITIONAL
collection featured in antique pewter



CC	Product Type	Length	Width	Height/Projection	Diameter	Base	Tap	Price Code
128mm	Pull	5 1/16in.	5/16in.	1 1/4in.	-	5/16in.	8-32	B
96mm	Pull	4 1/16in.	1 1/16in.	1 1/8in.	-	1 1/16in.	8-32	C
64mm	Cup Pull	4 1/16in.	1 1/4in.	1in.	-	-	8-32	B
-	Knob	-	-	1in.	1 3/16in.	1in.	8-32	B

Andante Available Finishes, Sizes & Part Numbers:



ANTIQUPEWTER

128mm CC	3011-1AP-P
96mm CC	7888-1AP-P
64mm CC	3012-1AP-P
Knob	7893-1AP-P



BRUSHED NICKEL

128mm CC	7881-1BPN-P
96mm CC	3014-1BPN-P
64mm CC	7884-1BPN-P
Knob	7891-1BPN-P



DULL BRONZE

128mm CC	3008-1DBZ-P
96mm CC	7889-1DBZ-P
64mm CC	3009-1DBZ-P
Knob	7894-1DBZ-P

ECHO

TIMELESS CHARM • TRADITIONAL
collection featured in matte black

Echo Available Finishes, Sizes & Part Numbers:



BRUSHED NICKEL

96mm CC	9225-1BPN-P
3in. CC	9222-1BPN-P
Knob	9228-1BPN-P



MATTE BLACK

96mm CC	9261-1055-P
3in. CC	9260-1055-P
Knob	9262-1055-P



OIL RUBBED BRONZE

96mm CC	9224-1ORB-P
3in. CC	9221-1ORB-P
Knob	9227-1ORB-P



POLISHED NICKEL

96mm CC	9258-1014-P
3in. CC	9257-1014-P
Knob	9259-1014-P



VERONA BRONZE

96mm CC	9226-10VB-P
3in. CC	9223-10VB-P
Knob	9229-10VB-P

CC	Product Type	Length	Width	Height/Projection	Diameter	Base	Tap	Price Code
96mm	Pull	5 3/4in.	3/4in.	1 1/4in.	-	1 1/4in.	8-32	C
3in.	Pull	4 3/4in.	3/4in.	1 1/4in.	-	1in.	8-32	B
-	Knob	-	-	1 3/4in.	1 3/4in.	3/4in.	8-32	B

EURO CLASSICA

TIMELESS CHARM • TRADITIONAL
collection featured in brushed nickel



	CC	Product Type	Length	Width	Height/Projection	Diameter	Base	Tap	Price Code
1	128mm	Pull	6 3/8in.	3/8in.	1 1/2in.	-	3/8in.	M4	D
2	96mm	Pull	4 3/8in.	1/2in.	1 3/8in.	-	3/8in.	M4	E
3	-	Knob	1 3/8in.	7/8in.	1 3/8in.	-	5/8in.	M4	D
4	-	Knob	-	-	1 1/2in.	1 3/8in.	1 1/8in.	M4	D
5	-	Knob	-	-	1 1/2in.	1 3/8in.	1 1/2in.	M4	D
6	-	Knob	-	-	1 1/2in.	1 3/8in.	1 1/2in.	M4	D

Euro Classica Available Finishes, Sizes & Part Numbers:



BRUSHED NICKEL

128mm CC	7084-1BPN-C
96mm CC	7081-1BPN-P
③ Knob	7090-1BPN-C
④ Knob	7087-1BPN-P
⑤ Knob	7093-1BPN-P
⑥ Knob	7096-1BPN-P



BRUSHED TIN

128mm CC	7085-1BT-P
96mm CC	7082-1BT-P*
③ Knob	Not Available
④ Knob	Not Available
⑤ Knob	7094-1BT-P
⑥ Knob	Not Available

*available at price code D

EURO TRADITIONS

TIMELESS CHARM • TRADITIONAL
collection featured in brushed antique copper



CC	Product Type	Length	Width	Height/Projection	Diameter	Base	Tap	Price Code
96mm	Pull	4 5/8in.	3/8in.	1 1/2in.	-	3/8in.	8-32	B
-	Knob	-	-	1 1/2in.	1 3/8in.	3/8in.	8-32	A

Euro Traditions Available Finishes, Sizes & Part Numbers:



BRUSHED ANTIQUE COPPER

96mm CC	2933-1BAC-P
Knob	2923-1BAC-P



BRUSHED ANTIQUE PEWTER

96mm CC	2934-1BAP-P
Knob	2924-1BAP-P



BRUSHED BLACK NICKEL

96mm CC	2931-1BBN-P
Knob	2921-1BBN-P



BRUSHED NICKEL

96mm CC	2930-1BPN-P
Knob	2920-1BPN-P



DULL RUST

96mm CC	2938-1FE-P*
Knob	2928-1FE-P*

*available at price code D



MATTE BLACK

96mm CC	2937-155-P
Knob	2927-155-P

HARMONY

TIMELESS CHARM • TRADITIONAL
collection featured in vintage nickel



Knob
has tooth at bottom to
help secure in position

CC	Product Type	Length	Width	Height/ Projection	Diameter	Base	Tap	Price Code
160mm	Pull	6 7/8in.	1 1/2in.	1 1/8in.	-	7/8in.	8-32	D
128mm	Pull	5 1/4in.	1 1/2in.	1 1/8in.	-	7/8in.	8-32	D
96mm	Pull	4 7/8in.	1 1/2in.	1 1/8in.	-	7/8in.	8-32	D
3in.	Pull	3 1/4in.	1 1/2in.	1 1/8in.	-	7/8in.	8-32	D
-	Knob	1 3/8in.	1 3/8in.	1 1/8in.	-	7/8in.	8-32	B

Parts in the Harmony Collection feature removable inserts that can be interchanged with other parts of the same length to create a unique mixed metal piece. Please note that pieces do not come as mixed metal. Hardware must be purchased separately and mixed as needed for design.

Harmony Available Finishes, Sizes & Part Numbers:

BRUSHED NICKEL		VERONA BRONZE		VINTAGE NICKEL		WEATHERED NICKEL	
160mm CC	9456-1BPN-P	160mm CC	9455-10VB-P	160mm CC	9579-1VTN-P	160mm CC	9454-10WN-P
128mm CC	9450-1BPN-P	128mm CC	9449-10VB-P	128mm CC	9578-1VTN-P	128mm CC	9448-10WN-P
96mm CC	9444-1BPN-P	96mm CC	9443-10VB-P	96mm CC	9577-1VTN-P	96mm CC	9442-10WN-P
3in. CC	9438-1BPN-P	3in. CC	9437-10VB-P	3in. CC	9576-1VTN-P	3in. CC	9436-10WN-P
Knob	9462-1BPN-P	Knob	9461-10VB-P	Knob	9580-1VTN-P	Knob	9460-10WN-P





HEARTHSTONE

TIMELESS CHARM • TRADITIONAL
collection featured in matte black



Hearthstone Available Finishes, Sizes & Part Numbers:



BRUSHED NICKEL

18in. CC	2168-1BPN-P
12in. CC	2035-1BPN-P
6in. CC	4076-1BPN-P
160mm CC	2045-1BPN-P
128mm CC	2040-1BPN-P
96mm CC	4070-1BPN-P
3in. CC	4064-1BPN-P
Knob	4083-1BPN-P



MATTE BLACK

18in. CC	2169-1055-P
12in. CC	2038-1055-P
6in. CC	4080-1055-P
160mm CC	2048-1055-P
128mm CC	2043-1055-P
96mm CC	4074-1055-P
3in. CC	4068-1055-P
Knob	4086-1055-P



MODERN BRUSHED GOLD

18in. CC	2157-1MDB-P
12in. CC	2156-1MDB-P
6in. CC	2155-1MDB-P
160mm CC	2154-1MDB-P
128mm CC	2153-1MDB-P
96mm CC	2152-1MDB-P
3in. CC	2151-1MDB-P
Knob	2158-1MDB-P



VERONA BRONZE

18in. CC	2167-10VB-P
12in. CC	2034-10VB-P
6in. CC	4075-10VB-P
160mm CC	2044-10VB-P
128mm CC	2039-10VB-P
96mm CC	4069-10VB-P
3in. CC	4063-10VB-P
Knob	4081-10VB-P



VINTAGE NICKEL

18in. CC	2165-1VTN-P
12in. CC	2164-1VTN-P
6in. CC	2163-1VTN-P
160mm CC	2162-1VTN-P
128mm CC	2161-1VTN-P
96mm CC	2160-1VTN-P
3in. CC	2159-1VTN-P
Knob	2166-1VTN-P



WEATHERED VERONA BRONZE

18in. CC	Not Available
12in. CC	2037-1WVB-P
6in. CC	4079-1WVB-P
160mm CC	2047-1WVB-P
128mm CC	2042-1WVB-P
96mm CC	4073-1WVB-P
3in. CC	4067-1WVB-P
Knob	4085-1WVB-P

AVAILABLE SIZES:

18in., 12in., 6in., 160mm, 128mm, 96mm, and 3in. CC, knob

CC	Product Type	Length	Width	Height/Projection	Diameter	Base	Tap	Price Code
18in.	*Appliance Pull	19 1/4in.	1 1/2in.	1 5/8in.	-	1 3/8in.	10-24	E
12in.	*Appliance Pull	13 3/8in.	3/4in.	1 13/16in.	-	1 1/2in.	10-24	E
6in.	Pull	7 3/8in.	1 1/8in.	1 11/16in.	-	1 1/8in.	8-32	D
160mm	Pull	7 5/8in.	9/16in.	1 1/2in.	-	7/8in.	8-32	D
128mm	Pull	6 1/8in.	1/2in.	1 7/8in.	-	7/8in.	8-32	D
96mm	Pull	4 13/16in.	3/8in.	1 3/8in.	-	7/8in.	8-32	B
3in.	Pull	3 15/16in.	3/8in.	1 3/8in.	-	1 3/8in.	8-32	B
-	Knob	1 3/8in.	1 1/8in.	1 1/8in.	-	1 3/8in.	8-32	B

See Designers' Group Ten for Polished Nickel finish on page 23

*Product not shown, please visit www.BerensonHardware.com to view images and details.

HILLCREST

TIMELESS CHARM • TRADITIONAL
collection featured in verona bronze



CC	Product Type	Length	Width	Height/Projection	Diameter	Base	Tap	Price Code
256mm	Appliance Pull	12in.	1 3/16in.	1 7/16in.	-	1 3/16in.	10-24	E
160mm	Pull	7 7/16in.	9/16in.	1 1/16in.	-	7/16in.	8-32	D
128mm	Pull	6 5/16in.	9/16in.	1 1/16in.	-	7/16in.	8-32	C
96mm	Pull	5 3/16in.	9/16in.	1 1/16in.	-	7/16in.	8-32	C

Hillcrest Available Finishes, Sizes & Part Numbers:



BRUSHED NICKEL

256mm CC	2073-1BPN-P
160mm CC	2071-1BPN-P
128mm CC	2069-1BPN-P
96mm CC	2049-1BPN-P



VERONA BRONZE

256mm CC	2074-10VB-P
160mm CC	2072-10VB-P
128mm CC	2070-10VB-P
96mm CC	2068-10VB-P

MAESTRO

TIMELESS CHARM • TRADITIONAL
collection featured in satin nickel



CC	Product Type	Length	Width	Height/Projection	Diameter	Base	Tap	Price Code
128mm	Pull	5 15/16in.	1/2in.	1 3/16in.	-	9/16in.	M4	E
96mm	Pull	4 1/2in.	7/16in.	1 1/16in.	-	1/2in.	M4	D
-	Knob	-	-	1 5/16in.	1 3/16in.	9/16in.	M4	D

Maestro Available Finishes, Sizes & Part Numbers:



RUBBED BRONZE

128mm CC	7180-1010-C
96mm CC	7176-1010-C
Knob	7184-1010-C



RUSTIC TIN

128mm CC	7179-10RT-C
96mm CC	7175-10RT-C
Knob	7183-10RT-C



SATIN NICKEL

128mm CC	7178-1015-C
96mm CC	7174-1015-C
Knob	7182-1015-C



VERONA BRONZE

128mm CC	7181-10VB-P
96mm CC	7177-10VB-P
Knob	7185-10VB-P



PRELUDE

TIMELESS CHARM • TRADITIONAL
collection available in all finishes shown

CC	Product Type	Length	Width	Height/Projection	Diameter	Base	Tap	Price Code
-	Hook	4in.	3/8in.	3 1/4in.	-	1 1/4in.	-	D

Prelude Available Finishes, Sizes & Part Numbers:



BRUSHED NICKEL

4in. 8012-BPN-P



MATTE BLACK

4in. 8014-55-P



OIL RUBBED BRONZE

4in. 8015-ORB-P



POLISHED BRASS

4in. 8010-03-P*

*available at price code E



POLISHED CHROME

4in. 8011-26-P



VERONA BRONZE

4in. 8016-VB-P



WEATHERED IRON

4in. 8017-LWI-P



WEATHERED NICKEL

4in. 8013-WN-P

TAILORED TRADITIONAL

TIMELESS CHARM • TRADITIONAL
collection featured in matte black



AVAILABLE SIZES:

12in., 224mm, 160mm, 128mm, and 96mm CC, knob

CC	Product Type	Length	Width	Height/Projection	Diameter	Base	Tap	Price Code
12in.	*Appliance Pull	13in.	1in.	1 1/16in.	-	1in.	10-24	E
224mm	Pull	9 5/8in.	1 3/16in.	1 3/8in.	-	1 3/16in.	8-32	E
160mm	Pull	7in.	1 1/16in.	1 3/8in.	-	1 1/16in.	8-32	D
128mm	Pull	5 3/4in.	2 3/32in.	1 5/16in.	-	2 3/32in.	8-32	C
96mm	Pull	4 1/2in.	2 3/32in.	1 5/16in.	-	2 3/32in.	8-32	C
-	Knob	1 1/4in.	1 1/4in.	1 1/4in.	-	1 1/16in.	8-32	C

*Product not shown, please visit www.BerensonHardware.com to view images and details.

Tailored Traditional Available Finishes, Sizes & Part Numbers:



BRUSHED NICKEL

12in. CC	1302-1BPN-P
224mm CC	1296-1BPN-P
160mm CC	1290-1BPN-P
128mm CC	1284-1BPN-P
96mm CC	1278-1BPN-P
Knob	1272-1BPN-P



MATTE BLACK

12in. CC	1305-1055-P
224mm CC	1299-1055-P
160mm CC	1293-1055-P
128mm CC	1287-1055-P
96mm CC	1281-1055-P
Knob	1275-1055-P



MODERN BRUSHED GOLD

12in. CC	1306-1MDB-P
224mm CC	1300-1MDB-P
160mm CC	1294-1MDB-P
128mm CC	1288-1MDB-P
96mm CC	1282-1MDB-P
Knob	1276-1MDB-P



POLISHED NICKEL

12in. CC	1304-1014-P
224mm CC	1298-1014-P
160mm CC	1292-1014-P
128mm CC	1286-1014-P
96mm CC	1280-1014-P
Knob	1274-1014-P



VERONA BRONZE

12in. CC	1303-10VB-P
224mm CC	1297-10VB-P
160mm CC	1291-10VB-P
128mm CC	1285-10VB-P
96mm CC	1279-10VB-P
Knob	1273-10VB-P



VINTAGE NICKEL

12in. CC	1307-1VTN-P
224mm CC	1301-1VTN-P
160mm CC	1295-1VTN-P
128mm CC	1289-1VTN-P
96mm CC	1283-1VTN-P
Knob	1277-1VTN-P

VESTED INTEREST

TIMELESS CHARM • TRADITIONAL
collection featured in vintage nickel



Vested Interest Available Finishes, Sizes & Part Numbers:



BRUSHED NICKEL

12in. CC	2335-1BPN-P
224mm CC	2333-1BPN-P
160mm CC	2331-1BPN-P
128mm CC	2329-1BPN-P
96mm CC	2327-1BPN-P
Knob	2337-1BPN-P



VERONA BRONZE

12in. CC	2336-10VB-P
224mm CC	2334-10VB-P
160mm CC	2332-10VB-P
128mm CC	2330-10VB-P
96mm CC	2328-10VB-P
Knob	2338-10VB-P



VINTAGE NICKEL

12in. CC	2373-1VTN-P
224mm CC	2372-1VTN-P
160mm CC	2371-1VTN-P
128mm CC	2370-1VTN-P
96mm CC	2369-1VTN-P
Knob	2374-1VTN-P

AVAILABLE SIZES:

12in., 224mm, 160mm, 128mm, and 96mm CC, knob

CC	Product Type	Length	Width	Height/Projection	Diameter	Base	Tap	Price Code
12in.	*Appliance Pull	13 1/4in.	1 5/16in.	1 3/4in.	-	3/8in.	10-24	E
224mm	Pull	9 3/4in.	3/4in.	1 3/8in.	-	9/16in.	8-32	D
160mm	Pull	7 1/4in.	1 1/8in.	1 1/2in.	-	1/2in.	8-32	D
128mm	Pull	6in.	5/8in.	1 3/8in.	-	1/2in.	8-32	C
96mm	Pull	4 3/4in.	5/8in.	1 3/8in.	-	1/2in.	8-32	C
-	Knob	-	-	1 5/16in.	1 1/4in.	1 1/8in.	8-32	B

*Product not shown, please visit www.BerensonHardware.com to view images and details.



VIBRATO

TIMELESS CHARM • TRADITIONAL
collection only available in verona bronze



	Part No.	CC	Product Type	Length	Width	Height/Projection	Diameter	Base	Tap	Price Code
1	7904-1VB-P	128mm	Pull	6 7/8in.	5/8in.	1 5/8in.	-	1/2in.	8-32	D
2	7905-1VB-P	96mm	Pull	5 3/8in.	5/8in.	1 5/8in.	-	1/2in.	8-32	D
3	7906-1VB-P	-	Knob	1 1/4in.	1/2in.	1 3/8in.	-	1/2in.	8-32	B
4	7895-1VB-P	-	Knob	-	-	1in.	1 3/8in.	1in.	8-32	B
5	7898-1VB-P	3in.	Pull	4 5/8in.	7/8in.	1 3/8in.	-	1/2in.	8-32	B
6	7890-1VB-P	96mm	Pull	4 1/8in.	1 1/8in.	1 1/8in.	-	1 5/8in.	8-32	C
7	7900-1VB-P	3in.	Pull	4 1/8in.	3/8in.	1 3/8in.	-	3/4in.	8-32	D
8	8016-VB-P	-	Hook	4in.	3/8in.	3 1/8in.	-	1 1/8in.	-	D
9	7897-1VB-P	-	Knob	1 7/8in.	1 1/8in.	1in.	-	7/8in.	8-32	C
10	7883-1VB-P	128mm	Pull	5 1/8in.	5/8in.	1 1/8in.	-	5/8in.	8-32	B
11	7901-1VB-P	3in.	Pull	3 3/8in.	3/8in.	1 1/8in.	-	3/8in.	8-32	B
12	7876-1VB-P	3in.	Cup Pull	4 5/8in.	1 3/8in.	1in.	-	-	8-32	D
13	7886-1VB-P	64mm	Cup Pull	4 1/8in.	1 1/8in.	1in.	-	-	8-32	B
14	7878-1VB-P	-	Knob	1 3/8in.	7/8in.	1 1/8in.	-	5/8in.	8-32	C
15	7899-1VB-P	-	Knob	-	-	1 1/8in.	1 1/8in.	3/4in.	8-32	A



VILLAGE

TIMELESS CHARM • TRADITIONAL
collection featured in brushed nickel



CC	Product Type	Length	Width	Height/Projection	Diameter	Base	Tap	Price Code
256mm	Appliance Pull	12 3/4in.	1 5/16in.	1 5/16in.	-	1 5/16in.	10-24	E
160mm	Pull	8 1/8in.	5/8in.	1 1/8in.	-	1 3/16in.	8-32	D
128mm	Pull	6 7/8in.	5/8in.	1 1/8in.	-	1 3/16in.	8-32	C
96mm	Pull	5 3/8in.	3/4in.	1 5/16in.	-	1 3/16in.	8-32	B
3in.	Pull	4 5/8in.	3/4in.	1 5/16in.	-	1 1/16in.	8-32	B

Village Available Finishes, Sizes & Part Numbers:



BRUSHED NICKEL

256mm CC	2083-1BPN-P
160mm CC	2081-1BPN-P
128mm CC	2079-1BPN-P
96mm CC	2077-1BPN-P
3in. CC	2075-1BPN-P



VERONA BRONZE

256mm CC	2084-10VB-P
160mm CC	2082-10VB-P
128mm CC	2080-10VB-P
96mm CC	2078-10VB-P
3in. CC	2076-10VB-P

Artisan Inspired



The decorative hardware of the Artisan Inspired Series features unique patterns and designs, giving each item a distinct flair that stands out on its own.



Art Nouveau

Artisan Inspired • Craftsman
collection featured in vintage nickel



CC	Product Type	Length	Width	Height/Projection	Diameter	Base	Tap	Price Code
128mm	Pull	7 1/4in.	1in.	1 3/4in.	-	1 3/4in.	8-32	D
96mm	Pull	5 1/4in.	1 1/4in.	1 3/4in.	-	3/4in.	8-32	C
3in. & 3 1/2 in.	Pull	5 1/4in.	1 1/4in.	1 1/4in.	-	3/4in.	8-32	B
-	Knob	-	-	1 1/4in.	1 3/4in.	3/4in.	8-32	B

Art Nouveau Available Finishes, Sizes & Part Numbers:



VERONA BRONZE

128mm CC	4014-10VB-P
96mm CC	4011-10VB-P
3in. & 3 1/2 in. CC	4134-10VB-P
Knob	4017-10VB-P



VINTAGE NICKEL

128mm CC	4015-1VTN-P
96mm CC	4012-1VTN-P
3in. & 3 1/2 in. CC	4135-1VTN-P
Knob	4018-1VTN-P

Euro Rustica

Artisan Inspired • Craftsman
collection featured in rustic iron



	CC	Product Type	Length	Width	Height/Projection	Diameter	Base	Tap	Price Code
1	96mm	Pull	4 3/4in.	1/2in.	1 3/4in.	-	3/4in.	M4	D
2	96mm	Pull	4 1/4in.	1 3/4in.	1in.	-	1 1/4in.	M4	D
3	64mm	Cup Pull	5 1/4in.	1 3/4in.	1in.	-	-	M4	D
4	-	Knob	-	-	1 1/4in.	1 3/4in.	1 1/4in.	M4	D
5	-	Knob	-	-	1 1/4in.	1 3/4in.	1 3/4in.	M4	D

Euro Rustica Available Finishes, Sizes & Part Numbers:



RUSTIC COPPER

① 96mm CC	2986-1RC-C
② 96mm CC	2980-1RC-C
③ 64mm CC	2974-1RC-C
④ Knob	2977-1RC-C
⑤ Knob	2983-1RC-C



RUSTIC IRON

① 96mm CC	2987-1RI-C
② 96mm CC	2981-1RI-C
③ 64mm CC	2975-1RI-C
④ Knob	2978-1RI-C
⑤ Knob	2984-1RI-C



RUSTIC NICKEL

① 96mm CC	2985-1RN-C
② 96mm CC	2979-1RN-C
③ 64mm CC	2973-1RN-C
④ Knob	2976-1RN-C
⑤ Knob	2982-1RN-C

Oak Park

Artisan Inspired • Craftsman
collection featured in brushed nickel



CC	Product Type	Length	Width	Height/Projection	Diameter	Base	Tap	Price Code
160mm	Pull	6 5/8in.	1 3/8in.	1 1/4in.	-	3/8in.	8-32	D
96mm	Pull	4 1/8in.	1 3/8in.	1 1/4in.	-	3/8in.	8-32	C
-	Knob	1 1/8in.	1 1/8in.	1 1/4in.	-	3/8in.	8-32	B

Oak Park Available Finishes, Sizes & Part Numbers:



BRUSHED NICKEL

160mm CC	9217-1BPN-P
96mm CC	9214-1BPN-P
Knob	9220-1BPN-P



VERONA BRONZE

160mm CC	9215-10VB-P
96mm CC	9212-10VB-P
Knob	9218-10VB-P



VINTAGE NICKEL

160mm CC	9216-1VTN-P
96mm CC	9213-1VTN-P
Knob	9219-1VTN-P

Overture

Artisan Inspired • Craftsman
collection featured in rustic black nickel



CC	Product Type	Length	Width	Height/Projection	Diameter	Base	Tap	Price Code
128mm	Pull	7in.	7/8in.	1 3/8in.	-	1 3/8in.	M4	E
96mm	Pull	5 3/8in.	3/4in.	1 1/8in.	-	1in.	M4	D
-	Knob	-	-	1in.	1 3/8in.	1/2in.	M4	D

Overture Available Finishes, Sizes & Part Numbers:



BRUSHED NICKEL

128mm CC	Not Available
96mm CC	7109-1BPN-C*
Knob	7114-1BPN-C

*available at price code E



RUSTIC BLACK NICKEL

128mm CC	7108-1RBN-C
96mm CC	7113-1RBN-C*
Knob	7118-1RBN-C

*available at price code E



RUSTIC COPPER

128mm CC	Not Available
96mm CC	7112-1RC-C
Knob	7117-1RC-C



RUSTIC NICKEL

128mm CC	7105-1RN-C
96mm CC	7110-1RN-C
Knob	7115-1RN-C

Puritan

Artisan Inspired • Craftsman
collection featured in verona bronze



CC	Product Type	Length	Width	Height/Projection	Diameter	Base	Tap	Price Code
128mm	Pull	6 1/2in.	1 5/8in.	1 1/2in.	-	3/8in.	8-32	D
96mm	Pull	4 1/2in.	1 5/8in.	1 1/2in.	-	3/8in.	8-32	D
3in.	Pull	3 1/2in.	1 5/8in.	1 1/2in.	-	3/8in.	8-32	C
-	Knob	1 5/8in.	1in.	1 3/8in.	-	7/8in.	8-32	B

Puritan Available Finishes, Sizes & Part Numbers:

BRUSHED NICKEL		BRUSHED TIN		POLISHED NICKEL		VERONA BRONZE	
128mm CC	9484-1BPN-P	128mm CC	9486-10BT-P	128mm CC	9573-1014-P	128mm CC	9485-10VB-P
96mm CC	9481-1BPN-P	96mm CC	9483-10BT-P	96mm CC	9572-1014-P	96mm CC	9482-10VB-P
3in. CC	9487-1BPN-P	3in. CC	9489-10BT-P	3in. CC	9574-1014-P	3in. CC	9488-10VB-P
Knob	9490-1BPN-P	Knob	9492-10BT-P	Knob	9575-1014-P	Knob	9491-10VB-P

Rhapsody

Artisan Inspired • Craftsman
collection featured in black



	CC	Product Type	Length	Width	Height/Projection	Diameter	Base	Tap	Price Code
1	-	Knob	2 1/2in.	1/2in.	1 1/2in.	-	3/8in.	8-32	B
2	-	Knob	1 3/4in.	1 3/8in.	1 1/4in.	-	3/8in.	8-32	B
3	-	Knob	-	-	1in.	1 5/8in.	3/8in.	8-32	B
4	-	Knob	-	-	1 5/8in.	1 1/4in.	3/8in.	8-32	A
5	128mm	Pull	5 7/8in.	3/8in.	1 1/4in.	-	3/8in.	8-32	C
6	96mm	Pull	4 3/4in.	3/8in.	1 1/4in.	-	3/8in.	8-32	C

Rhapsody Available Finishes, Sizes & Part Numbers:

BLACK		WEATHERED IRON		WEATHERED NICKEL	
128mm CC	3040-155-P	128mm CC	3041-1LWI-P	128mm CC	3042-1WN-P
96mm CC	3043-155-P	96mm CC	3044-1LWI-P	96mm CC	3045-1WN-P
① Knob	3046-155-P	① Knob	3047-1LWI-P	① Knob	3048-1WN-P
② Knob	3049-155-P	② Knob	3050-1LWI-P	② Knob	3051-1WN-P
③ Knob	3052-155-P	③ Knob	3053-1LWI-P	③ Knob	3054-1WN-P
④ Knob	3055-155-P	④ Knob	Not Available	④ Knob	3057-1WN-P

Sonata

Artisan Inspired • Craftsman
collection featured in rustic copper



CC	Product Type	Length	Width	Height/Projection	Diameter	Base	Tap	Price Code
96mm	Pull	4 1/16in.	1in.	1in.	-	3/8in.	M4	D
-	Knob	-	-	1in.	1 3/16in.	7/8in.	M4	D

Sonata Available Finishes, Sizes & Part Numbers:



BRUSHED NICKEL

96mm CC	7119-1BPN-P
Knob	7125-1BPN-C



RUSTIC BLACK NICKEL

96mm CC	7124-1RBN-C*
Knob	7130-1RBN-C

*available at price code E



RUSTIC BRUSHED BRASS

96mm CC	7120-1RAB-C*
Knob	7126-1RAB-C

*available at price code E



RUSTIC COPPER

96mm CC	7123-1RC-C
Knob	7129-1RC-C



RUSTIC IRON

96mm CC	7122-1RI-C
Knob	7128-1RI-C



RUSTIC NICKEL

96mm CC	7121-1RN-C
Knob	Not Available

Toccata

Artisan Inspired • Craftsman
collection featured in oil rubbed bronze



	CC	Product Type	Length	Width	Height/Projection	Diameter	Base	Tap	Price Code
1	6in.	Pull	7 1/16in.	5/8in.	1 1/16in.	-	5/8in.	8-32	E
2	3in.	Pull	4 3/16in.	3/8in.	1 1/8in.	-	7/8in.	8-32	C
3	-	Knob	-	-	1 9/16in.	1 1/2in.	1 1/8in.	8-32	D
4	-	Knob	-	-	1 1/8in.	1 1/4in.	3/8in.	8-32	C

Toccata Available Finishes, Sizes & Part Numbers:



BRUSHED NICKEL

6in. CC	8237-1BPN-P
3in. CC	8243-1BPN-P
③ Knob	8249-1BPN-P
④ Knob	8255-1BPN-P



OIL RUBBED BRONZE

6in. CC	8239-1ORB-P
3in. CC	8245-1ORB-P
③ Knob	8251-1ORB-P
④ Knob	8257-1ORB-P



VERONA BRONZE

6in. CC	8238-1VB-P
3in. CC	8244-1VB-P
③ Knob	8250-1VB-P
④ Knob	8256-1VB-P



WEATHERED NICKEL

6in. CC	8240-1WN-P
3in. CC	8246-1WN-P
③ Knob	8252-1WN-P
④ Knob	8258-1WN-P

MIX & match



Here you will find hardware with unique designs and finishes that can be coordinated across a variety of collections and styles.

MIX & match

Assorted Styles and Finishes
parts shown in finish they are available in



BRONZE RUST GLAZE

■ 1610-1RBG-P 5in. CC



BRONZE RUST GLAZE

■ 1614-1RBG-P Knob



VERONA BRONZE

■ 1644-1VB-P Knob



ANTIQUE IRON

2000-1AI-P 3in. CC



DULL ANTIQUE BRASS

■ 2942-1DAB-C 128mm CC



BRUSHED NICKEL

■ 2943-1BPN-C 128mm CC



TIN

■ 2949-1TN-C 64mm CC



BRUSHED NICKEL

■ 2953-1BPN-C 64mm CC



ANTIQUE IRON

2001-1AI-P Knob



BLACK

2052-155-P 96mm CC



DARK COPPER

■ 2236-1DC-P 3in. CC



DARK COPPER

■ 2237-1DC-P Knob



TIN

■ 2954-1TN-C Knob



DULL ANTIQUE BRASS

■ 2957-1DAB-C Knob



ALUMINUM

■ 2959-1ALU-C 128mm CC



BRUSHED NICKEL

■ 2960-1BPN-C 128mm CC



POLISHED CHROME

■ 2794-226-P 96mm CC



BRUSHED NICKEL

■ 2795-2BPN-P 96mm CC



WHITE CERAMIC

2880-539-P Knob



TIN

■ 2940-1TN-C 128mm CC



POLISHED CHROME ⚡

■ 2961-126-C 192mm CC



BRUSHED NICKEL

■ 2962-1BPN-C 192mm CC



ALUMINUM

■ 2963-1ALU-C 160mm CC



BRUSHED NICKEL

■ 2964-1BPN-C 160mm CC

MIX & match

Assorted Styles and Finishes
parts shown in finish they are available in



POLISHED CHROME ⚡

■ 2965-126-C 160mm CC



ALUMINUM

■ 2966-1ALU-C 192mm CC



BRUSHED NICKEL

■ 2967-1BPN-C 192mm CC



POLISHED CHROME ⚡

■ 2970-126-C 128mm CC



ALUMINUM

■ 2971-1ALU-C 192mm CC



POLISHED CHROME ⚡

■ 2972-126-C 192mm CC



BLACK

3017-155-P 128mm CC



BRUSHED NICKEL

■ 3030-1BPN-P 96mm CC



UNLAQUERED OAK

■ 3460-630-B Knob



OIL RUBBED BRONZE

■ 4055-1ORB-P Knob
has tooth at bottom to help secure in position



BRUSHED BLACK NICKEL

■ 4997-3BBN-P Knob



ANTIQUÉ ENGLISH

■ 4998-302-P 4in. CC



BRUSHED BLACK NICKEL

■ 5006-3BBN-P Knob



POLISHED NICKEL

■ 5148-14-P Latch



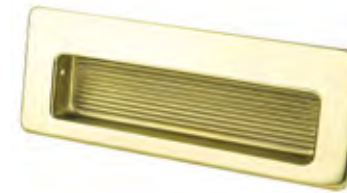
VERONA BRONZE

■ 5149-VB-P Latch



BRUSHED NICKEL

■ 5150-BPN-P Latch



GOLD

6691-107-B Recess Pull



POLISHED CHROME

6692-126-B Recess Pull



SATIN NICKEL

■ 6932-115-P 96mm CC



GOLD

7031-907-C Knob



POLISHED CHROME

7032-926-C Knob



POLISHED CHROME

7038-926-C Knob



GOLD

7041-907-C Knob



POLISHED CHROME

7042-926-C Knob

MIX & match

Assorted Styles and Finishes
parts shown in finish they are available in



BRUSHED NICKEL

■ 7066-1BPN-C 96mm CC



SATIN NICKEL

■ 7100-115-C 128mm CC



SATIN NICKEL

■ 7155-1015-C 416mm CC



RUSTIC TIN

■ 7156-10RT-C 416mm CC



OIL RUBBED BRONZE

7875-1ORB-P 3in. CC



OIL RUBBED BRONZE

■ 7877-1ORB-P Knob



OIL RUBBED BRONZE

7879-1ORB-P Knob



OIL RUBBED BRONZE

■ 7880-1ORB-P 3in. CC



RUBBED BRONZE

■ 7157-1010-C 416mm CC



VERONA BRONZE

■ 7158-10VB-C 416mm CC



POLISHED BRASS

■ 7315-303-P Knob



POLISHED BRASS

■ 7317-303-B Knob



OIL RUBBED BRONZE

7896-1ORB-P Knob



OIL RUBBED BRONZE

7907-1ORB-P 3in. CC



OIL RUBBED BRONZE

7908-1ORB-P Knob



OIL RUBBED BRONZE

■ 7909-1ORB-P Knob



OIL RUBBED BRONZE

■ 7870-2ORB-P 128mm CC



OIL RUBBED BRONZE

■ 7871-2ORB-P Knob

has tooth at bottom to help secure in position



OIL RUBBED BRONZE

■ 7873-2ORB-P Knob



OIL RUBBED BRONZE

■ 7874-1ORB-P 3in. CC



OIL RUBBED BRONZE

■ 7910-1ORB-P 96mm CC



RUSTIC IRON

■ 8241-1RI-P 6in. CC



RUSTIC IRON

■ 8253-1RI-P Knob



RUSTIC IRON

■ 8259-1RI-P Knob

MIX & match

Assorted Styles and Finishes
parts shown in finish they are available in



RUST GLAZE

■ 8266-1RGZ-P 6in. CC



RUST GLAZE

■ 8272-1RGZ-P 4in. CC



BRUSHED NICKEL

■ 8291-1BPN-P 18in. CC



VERONA BRONZE

■ 8292-1VB-P 18in. CC



MATTE BLACK

9947-1055-P 3in. CC



POLISHED BRASS

9950-103-P Knob



POLISHED CHROME

9951-126-P Knob



BLACK NICKEL

■ 9952-198-P Knob



OIL RUBBED BRONZE

■ 8293-1ORB-P 18in. CC



WEATHERED NICKEL

■ 8294-1WN-P 18in. CC



POLISHED CHROME

■ 9500-326-P 4in. CC



POLISHED CHROME

■ 9704-126-P 96mm CC



SATIN BRASS

9955-15B-P Knob



BRUSHED NICKEL

9956-1BPN-P Knob



SATIN CHROME

9958-15C-P Knob



ANTIQUPE PEWTER

9960-2AP-P 4in. CC



BLACK NICKEL

■ 9704-198-P 96mm CC



ANTIQUPE SILVER

9704-199-P 96mm CC



MODERN BRUSHED GOLD

9714-1MDB-P Knob



MODERN BRUSHED GOLD

9946-1MDB-P 3in. CC



ANTIQUPE PEWTER

■ 9961-2AP-P 128mm CC



ANTIQUPE PEWTER

■ 9962-2AP-P 192mm CC



ANTIQUPE PEWTER

■ 9966-2AP-P Knob

has tooth at bottom to help secure in position



ANTIQUPE PEWTER

■ 9967-2AP-P Knob

has tooth at bottom to help secure in position

MIX & match

Assorted Styles and Finishes
parts shown in finish they are available in



BLACK

■ 9980-255-P 4in. CC



BLACK

■ 9984-255-P Knob



BLACK

■ 9986-255-P Knob
has tooth at bottom to help secure in position



BLACK

■ 9989-255-P 96mm CC



BLACK

■ 9991-255-P 192mm CC



Display Boards



ASPIRE - PG 16 0292-7000-05-G



CONNECTIONS - PG 19 0275-7000-05-G



OASIS - PG 38 0293-7000-05-G



OPUS - PG 39 0253-7000-05-G



DESIGNERS' GROUP TEN - PG 22 0280-7000-05-G



DIERDRA - PG 26 0322-7000-05-G



SUBTLE SURGE - PG 42 0478-7000-05-G



TEMPO - PG 44 0377-7000-05-G



DOMESTIC BLISS - PG 30 0380-7000-05-G



EURO MODERNO - PG 33 0364-7000-05-G



VALENCIA - PG 48 0225-7000-05-G



VIRTUOSO - PG 49 0365-7000-05-G



FORTÉ - PG 34 0241-7000-05-G



MEADOW - PG 36 0370-7000-05-G



BRAVO - PG 52 0270-7000-05-G



ELEVATE - PG 56 0369-7000-05-G

Display Boards



EPOCH EDGE - PG 58 0479-7000-05-G



FLUIDIC - PG 60 0314-7000-05-G



AMERICAN CLASSICS - PG 78 0214-7000-05-G



ANDANTE | EURO TRADITIONS - PG 81 & 85 0360-7000-05-G



LAURA - PG 61 0323-7000-05-G



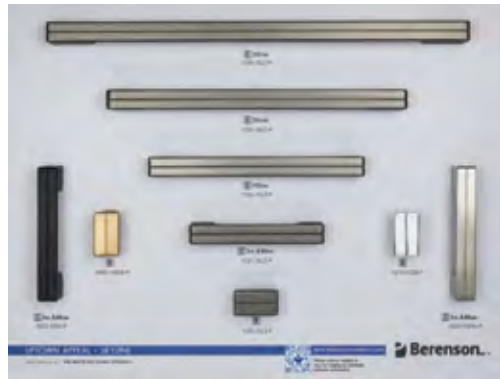
METRO - PG 64 0274-7000-05-G



ECHO - PG 82 0295-7000-05-G



HARMONY - PG 86 0313-7000-05-G



SKYLINE - PG 68 0291-7000-05-G



STAINLESS STEEL - PG 70 0217-70SS-05-G



HEARTHSTONE - PG 90 0277-7000-05-G



HILLCREST - PG 92 0373-7000-05-G



STUDIO - PG 73 0371-7000-05-G



SWAGGER - PG 74 0378-7000-05-G



MAESTRO | EURO CLASSICA - PG 93 & 84 0362-7000-05-G



PRELUDE - PG 95 0211-7000-05-G

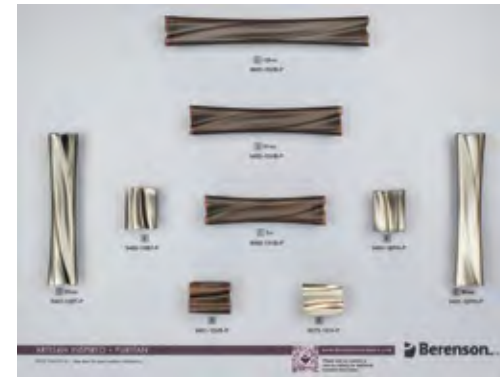
Display Boards



TAILORED TRADITIONAL - PG 96 0477-7000-05-G



VESTED INTEREST - PG 98 0379-7000-05-G



PURITAN - PG 110 0315-7000-05-G



VIBRATO - PG 100 0204-70VB-05-G



VILLAGE - PG 103 0372-7000-05-G



RHAPSODY - PG 111 0361-7000-05-G



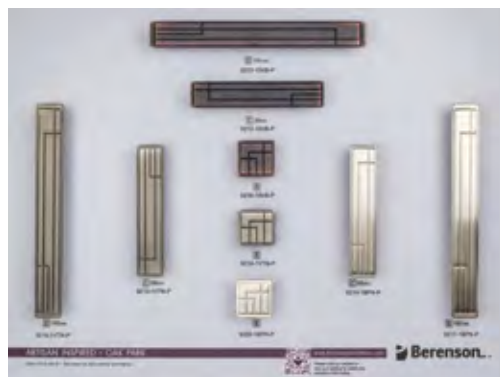
ART NOUVEAU - PG 106 0276-7000-05-G



EURO RUSTICA - PG 107 0210-7000-05-G



TOCCATA - PG 113 0240-7000-05-G



OAK PARK - PG 108 0294-7000-05-G



OVERTURE | SONATA - PG 109 & 112 0359-7000-05-G

PLANOGRAM STICKERS (POG)

Located on the back of each display board. The sticker provides information to help you order the part you need.

CC Measurement

Product Type

Finish

Part Number

Price Code

DOMESTIC BLISS			0380-7000-03-G	
CC	Type	Finish	Part No.	Price Code
320MM.	Pull	Brushed Nickel	2356-1BPN-P	E
224MM.	Pull	Brushed Nickel	2352-1BPN-P	D
160MM.	Pull	Brushed Nickel	2348-1BPN-P	D
128MM.	Pull	Brushed Nickel	2343-1BPN-P	C
96MM.	Pull	Brushed Nickel	2339-1BPN-P	C
	Knob	Brushed Nickel	2360-1BPN-P	B
320MM.	Pull	Modern Brushed Gold	2359-1MDB-P	E
224MM.	Pull	Modern Brushed Gold	2355-1MDB-P	D
160MM.	Pull	Modern Brushed Gold	2351-1MDB-P	D
128MM.	Pull	Modern Brushed Gold	2347-1MDB-P	C
96MM.	Pull	Modern Brushed Gold	2342-1MDB-P	C
	Knob	Modern Brushed Gold	2363-1MDB-P	B
320MM.	Pull	Polished Nickel	2358-1014-P	E
224MM.	Pull	Polished Nickel	2354-1014-P	D
160MM.	Pull	Polished Nickel	2350-1014-P	D
128MM.	Pull	Polished Nickel	2346-1014-P	C
96MM.	Pull	Polished Nickel	2341-1014-P	C
	Knob	Polished Nickel	2362-1014-P	B
320MM.	Pull	Verona Bronze	2357-10VB-P	E
224MM.	Pull	Verona Bronze	2353-10VB-P	D
160MM.	Pull	Verona Bronze	2349-10VB-P	D
128MM.	Pull	Verona Bronze	2344-10VB-P	C
96MM.	Pull	Verona Bronze	2340-10VB-P	C
	Knob	Verona Bronze	2361-10VB-P	B

* Part shown on front of board.

0380-POG-01

Display Boards

Beauty boards draw attention and inspire customers to use hardware by Berenson. They are the perfect way to fill your tower and complement your collections with striking imagery. Each beauty display board measures 11 1/4 in. x 15 1/4 in. x 1/8 in. and has a notch in the bottom to help insert and remove the board from the display.

BRAND FOCUSED

We offer boards featuring Berenson and Advantage Plus by Berenson product line logos and the Price Code Breakdown.

ENVIRONMENTAL IMAGE

Beauty boards show customers how Berenson's decorative hardware looks completely installed and in use.



PRICING CODE BEAUTY BOARD 0496-7000-02



SKYLINE BEAUTY BOARD 0500-7000-02



ELEVATE BEAUTY BOARD 0536-7000-02



T-BAR BEAUTY BOARD 0537-7000-02



ADVANTAGE PLUS BEAUTY BOARD 0538-7000-02



BERENSON BEAUTY BOARD 0539-7000-02

NOTE: Display board artwork is subject to change at any time and may not reflect the image shown above. Beauty Boards contain printed **IMAGES ONLY. NO HARDWARE INCLUDED** ON BEAUTY BOARDS.

Display Towers

For more information or to order contact:
Sales@BerensonHardware.com | 800. 333. 0578

Berenson offers two different size towers for displaying our products, a 12-board option and a 36-board option. Each display tower rotates 360 degrees for easy access and comes with branded headers. Choose a standard selection of display boards or build a custom tower.

12-Board Display Tower

0012-2000-01

WHAT TO KNOW:
Measures 19 3/4 in. width by 85 1/4 in. height

Holds 12 display boards
Display boards measure 11 1/4 in. x 15 1/4 in. x 1/8 in.



36-Board Display Tower

0011-2000-01

WHAT TO KNOW:
Measures 34 7/8 in. width by 85 1/4 in. height

Holds 36 display boards
Display boards measure 11 1/4 in. x 15 1/4 in. x 1/8 in.



Attaches right onto the tower!

DISPLAY TOWER SHELF

0170-0KIT-01

This kit includes the Display Tower Shelf, assembly instructions, the Display Guide and the Price Code Guide.



Visit our [YouTube channel](#) for more information!



Berenson Header
0515-7000-02



Advantage Plus Header
0513-7000-02



R. Christensen Header
0514-7000-02

Brand Headers

Brand headers are available in three options: Berenson, Advantage Plus by Berenson and R. Christensen by Berenson. Each header is double sided and can also be placed back to back for dual branding. The 12-board display tower has one header slot and the 36-board display tower has three header slots.

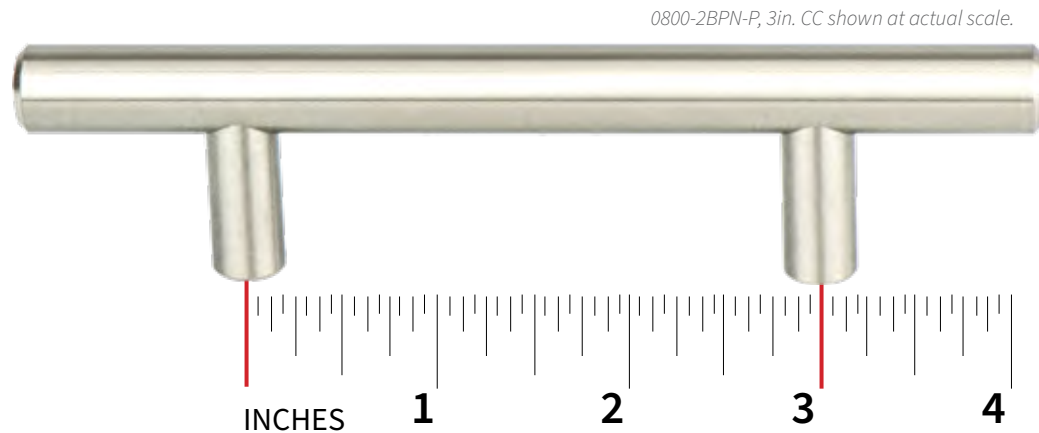
Brand headers measure 7 7/8 in. x 15 1/4 in. x 1/8 in.

CC & Installation

How To Measure the Center to Center

To determine the center to center (CC) of a pull, use a ruler to measure the distance between the centers of the screw holes.

Berenson pulls come in both inch and millimeter CC's. The chart below can help you determine the conversion of your measurement.



Inches	Millimeters
1 ¼ in.	32mm
2 ⅙ in.	56mm
2 ½ in.	64mm
3 in.	76.2mm
3 ½ in.	88.9mm
3 ⅝ in.	96mm
4 in.	101.6mm
4 ½ in.	112mm
5 ⅙ in.	128mm
6 in.	152.4mm
6 ⅙ in.	160mm
6 ⅝ in.	169mm
7 ⅙ in.	192mm
8 ⅜ in.	224mm
10 ⅙ in.	256mm
11 ⅝ in.	288mm
12 in.	304.8mm
12 ⅝ in.	320mm
15 ⅙ in.	384mm
16 ⅝ in.	416mm
17 ⅝ in.	448mm
18 in.	457.2mm
21 ⅝ in.	544mm
25 ⅝ in.	640mm
26 ⅝ in.	672mm
30 ⅝ in.	768mm

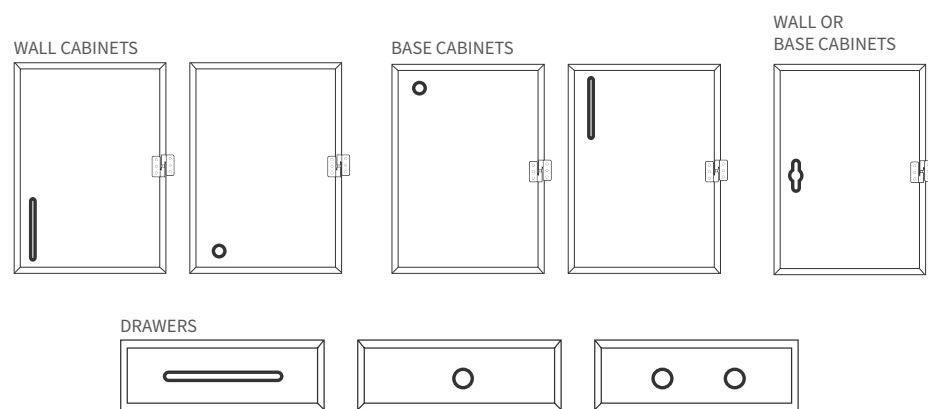
Installing Decorative Hardware for First Time

TOOLS REQUIRED:

- Ruler or Cabinet Hardware Template
- Power Drill
- ⅜ in. Drill Bit
- Screwdriver

PLACEMENT TIPS

Where you place your hardware on a cabinet is entirely up to you. You can see some traditional placement of hardware below.



Special consideration should be made when installing hardware on a drawer. Depending on the weight or length of the drawer, you may want to use a longer pull or two knobs spaced evenly apart.

INSTALLATION

When you have decided where you want your hardware placed, use a ruler or cabinet hardware template to mark the drilling locations. You'll want the placement to be the same across all cabinets for a consistent look. Once all the locations are marked you are ready to use your ⅜ in. drill bit and drill the holes. Now, all that's left to do is install your gorgeous hardware and enjoy!

FAQ

Where can I see and buy Berenson Hardware on display?

You can purchase Berenson hardware from a variety of sources, including architectural hardware showrooms, kitchen and bath oriented dealers and internet re-sellers.

To find the retailer nearest to you, visit our website [Find a Store](#) page. If you carry Berenson product and would like your business to be listed on our [Find a Store](#) page, please contact your sales representative or email us.

Do you offer an online catalog?

Yes, you can view and download a digital copy of all of our current catalogs on our website, www.BerensonHardware.com. Locate them from our [Main Menu](#) under the [Support](#) section.

Is there a minimum order quantity?

There is no minimum order quantity or broken box charge. Berenson will ship any product in any quantity.

How soon are items shipped after being ordered?

Orders placed before 3:00 PM EST will ship the same day.

Large orders that must ship by truck will go out the day after the order is placed.



Do you offer drop shipments?

Yes, we will ship right to your customer if needed.

Do your products come with screws and what length are they?

Yes, most hardware includes 8-32 x 1in. machine screws or M4 x 45mm break off screws. Appliance pulls come with 10-24 x 1in. machine screws.

What is the best way to care for hardware?

When necessary, our decorative hardware is best cleaned with warm water, mild soap, and a soft cloth. Avoid the use of abrasive cleaning products or window cleaner. Over time, the use of such products will result in the removal of the protective coating.

Additional Questions?

Check our [FAQ](#) section on our website or email us at info@berensonhardware.com



Part Index



Part No.	CC/Type	Page No.
0800-2BPN-P	3in.	46
0801-20VB-P	3in.	47
0802-2BPN-P	96mm	46
0803-20VB-P	96mm	47
0804-2BPN-P	128mm	46
0805-20VB-P	128mm	47
0806-2BPN-P	192mm	46
0807-20VB-P	192mm	47
0808-2BPN-P	256mm	46
0809-20VB-P	256mm	47
0810-2BPN-P	320mm	46
0811-20VB-P	320mm	47
0812-20VB-P	160mm	47
0813-20VB-P	224mm	47
0820-2MDB-P	3in	46
0821-2MDB-P	96mm	46
0822-2MDB-P	128mm	46
0823-2MDB-P	160mm	46
0824-2MDB-P	192mm	46
0825-2MDB-P	224mm	46
0826-2MDB-P	256mm	46
0828-2MDB-P	320mm	46
0829-2MDB-P	Knob	46
0830-2055-P	3in	46
0831-2055-P	96mm	46
0832-2055-P	128mm	46
0833-2055-P	160mm	46
0834-2055-P	192mm	46
0835-2055-P	224mm	46
0836-2055-P	256mm	46
0838-2055-P	320mm	46
0839-2055-P	Knob	46
1046-40BC-P	32mm	53
1047-40BC-P	56mm	53
1048-40BC-P	112mm	53
1049-40BC-P	169mm	53
1051-4ALU-B	Edge Pull	53
1052-4BPN-P	32mm	53
1053-4026-P	32mm	53
1055-40VB-P	32mm	53
1056-4055-P	32mm	53
1057-4BPN-P	56mm	53
1058-4026-P	56mm	53
1059-40VB-P	56mm	53
1060-4055-P	56mm	53
1061-4BPN-P	112mm	53

Part No.	CC/Type	Page No.
1062-4026-P	112mm	53
1063-40VB-P	112mm	53
1064-4055-P	112mm	53
1065-4BPN-P	169mm	53
1066-4026-P	169mm	53
1067-40VB-P	169mm	53
1068-4055-P	169mm	53
1069-40SG-P	32mm	53
1070-40SG-P	56mm	53
1071-40SG-P	112mm	53
1072-40SG-P	169mm	53
1073-4GPH-P	32mm	53
1074-4GPH-P	56mm	53
1075-4GPH-P	112mm	53
1076-4GPH-P	169mm	53
1114-1MDB-P	18in.	43
1115-1BPN-P	18in.	43
1116-1014-P	18in.	43
1117-10VB-P	18in.	43
1118-1VTN-P	18in.	43
1119-1055-P	18in.	43
1120-1026-P	320mm	69
1121-1SLT-P	3in. and 96mm	69
1122-1SLT-P	160mm	69
1123-1SLT-P	224mm	69
1124-1SLT-P	320mm	69
1125-1SLT-P	Knob	69
1126-2BPN-P	160mm	46
1127-2BPN-P	224mm	46
1128-2BPN-P	288mm	46
1129-2BPN-P	384mm	46
1130-2BPN-P	448mm	46
1131-2BPN-P	544mm	46
1132-2BPN-P	640mm	46
1133-2BPN-P	768mm	46
1200-1BPN-P	Knob	59
1201-10VB-P	Knob	59
1202-1026-P	Knob	59
1203-1055-P	Knob	59
1204-1MDB-P	Knob	59
1205-1VTN-P	Knob	59
1206-1BPN-P	96mm	59
1207-10VB-P	96mm	59
1208-1026-P	96mm	59
1209-1055-P	96mm	59
1210-1MDB-P	96mm	59

Part No.	CC/Type	Page No.
1211-1VTN-P	96mm	59
1212-1BPN-P	128mm	59
1213-10VB-P	128mm	59
1214-1026-P	128mm	59
1215-1055-P	128mm	59
1216-1MDB-P	128mm	59
1217-1VTN-P	128mm	59
1218-1BPN-P	160mm	59
1219-10VB-P	160mm	59
1220-1026-P	160mm	59
1221-1055-P	160mm	59
1222-1MDB-P	160mm	59
1223-1VTN-P	160mm	59
1224-1BPN-P	224mm	59
1225-10VB-P	224mm	59
1226-1026-P	224mm	59
1227-1055-P	224mm	59
1228-1MDB-P	224mm	59
1229-1VTN-P	224mm	59
1230-1BPN-P	12in.	59
1231-10VB-P	12in.	59
1232-1026-P	12in.	59
1233-1055-P	12in.	59
1234-1MDB-P	12in.	59
1235-1VTN-P	12in.	59
1236-1BPN-P	Knob	43
1237-10VB-P	Knob	43
1238-1014-P	Knob	43
1239-1055-P	Knob	43
1240-1MDB-P	Knob	43
1241-1VTN-P	Knob	43
1242-1BPN-P	96mm	43
1243-10VB-P	96mm	43
1244-1014-P	96mm	43
1245-1055-P	96mm	43
1246-1MDB-P	96mm	43
1247-1VTN-P	96mm	43
1248-1BPN-P	128mm	43
1249-10VB-P	128mm	43
1250-1014-P	128mm	43
1251-1055-P	128mm	43
1252-1MDB-P	128mm	43
1253-1VTN-P	128mm	43
1254-1BPN-P	160mm	43
1255-10VB-P	160mm	43
1256-1014-P	160mm	43
1257-1055-P	160mm	43
1258-1MDB-P	160mm	43
1259-1VTN-P	160mm	43
1260-1BPN-P	224mm	43

Part No.	CC/Type	Page No.
1261-10VB-P	224mm	43
1262-1014-P	224mm	43
1263-1055-P	224mm	43
1264-1MDB-P	224mm	43
1265-1VTN-P	224mm	43
1266-1BPN-P	12in.	43
1267-10VB-P	12in.	43
1268-1014-P	12in.	43
1269-1055-P	12in.	43
1270-1MDB-P	12in.	43
1271-1VTN-P	12in.	43
1272-1BPN-P	Knob	97
1273-10VB-P	Knob	97
1274-1014-P	Knob	97
1275-1055-P	Knob	97
1276-1MDB-P	Knob	97
1277-1VTN-P	Knob	97
1278-1BPN-P	96mm	97
1279-10VB-P	96mm	97
1280-1014-P	96mm	97
1281-1055-P	96mm	97
1282-1MDB-P	96mm	97
1283-1VTN-P	96mm	97
1284-1BPN-P	128mm	97
1285-10VB-P	128mm	97
1286-1014-P	128mm	97
1287-1055-P	128mm	97
1288-1MDB-P	128mm	97
1289-1VTN-P	128mm	97
1290-1BPN-P	160mm	97
1291-10VB-P	160mm	97
1292-1014-P	160mm	97
1293-1055-P	160mm	97
1294-1MDB-P	160mm	97
1295-1VTN-P	160mm	97
1296-1BPN-P	224mm	97
1297-10VB-P	224mm	97
1298-1014-P	224mm	97
1299-1055-P	224mm	97
1300-1MDB-P	224mm	97
1301-1VTN-P	224mm	97
1302-1BPN-P	12in.	97
1303-10VB-P	12in.	97
1304-1014-P	12in.	97
1305-1055-P	12in.	97
1306-1MDB-P	12in.	97
1307-1VTN-P	12in.	97
1610-1RBG-P	5in.	116
1614-1RBG-P	Knob	116
1644-1VB-P	Knob	116

Part No.	CC/Type	Page No.
2000-1AI-P	3in.	116
2001-1AI-P	Knob	116
2006-2026-P	320mm	47
2012-2026-P	3in.	47
2013-2026-P	96mm	47
2014-2026-P	128mm	47
2015-2026-P	192mm	47
2016-2026-P	224mm	47
2017-2026-P	256mm	47
2018-20VB-P	Knob	47
2019-2026-P	Knob	47
2020-2BPN-P	Knob	46
2021-90SS-P	128mm	73
2022-90SS-P	160mm	73
2023-90SS-P	192mm	73
2024-90SS-P	224mm	73
2025-90SS-P	256mm	73
2026-90SS-P	288mm	73
2027-90SS-P	576mm	73
2028-2026-P	160mm	47
2029-10VB-P	96mm	17
2030-10VB-P	128mm	17
2031-10VB-P	160mm	17
2032-10VB-P	12in.	17
2033-10VB-P	Knob	17
2034-10VB-P	12in.	91
2035-1BPN-P	12in.	91
2036-1014-P	12in.	23
2037-1WVB-P	12in.	91
2038-1055-P	12in.	91
2039-10VB-P	128mm	91
2040-1BPN-P	128mm	91
2041-1014-P	128mm	23
2042-1WVB-P	128mm	91
2043-1055-P	128mm	91
2044-10VB-P	160mm	91
2045-1BPN-P	160mm	91
2046-1014-P	160mm	23
2047-1WVB-P	160mm	91
2048-1055-P	160mm	91
2049-1BPN-P	96mm	92
2052-155-P	96mm	116
2055-1FE-P	Knob	79
2068-10VB-P	96mm	92
2069-1BPN-P	128mm	92
2070-10VB-P	128mm	92
2071-1BPN-P	160mm	92
2072-10VB-P	160mm	92
2073-1BPN-P	256mm	92
2074-10VB-P	256mm	92

Part No.	CC/Type	Page No.
2075-1BPN-P	3in.	103
2076-10VB-P	3in.	103
2077-1BPN-P	96mm	103
2078-10VB-P	96mm	103
2079-1BPN-P	128mm	103
2080-10VB-P	128mm	103
2081-1BPN-P	160mm	103
2082-10VB-P	160mm	103
2083-1BPN-P	256mm	103
2084-10VB-P	256mm	103
2085-4BPN-P	96mm	57
2086-40VB-P	96mm	57
2087-4BPN-P	128mm	57
2088-40VB-P	128mm	57
2089-4BPN-P	160mm	57
2090-40VB-P	160mm	57
2091-4BPN-P	256mm	57
2092-40VB-P	256mm	57
2093-4BPN-P	320mm	57
2094-40VB-P	320mm	57
2095-4BPN-P	Knob	57
2096-40VB-P	Knob	57
2097-4BPN-P	96mm	37
2098-40VB-P	96mm	37
2099-4BPN-P	128mm	37
2100-40VB-P	18in.	57
2101-4BPN-P	18in.	57
2102-40SG-P	96mm	57
2103-40SG-P	128mm	57
2104-40SG-P	160mm	57
2105-40SG-P	256mm	57
2106-40SG-P	320mm	57
2107-40SG-P	18in.	57
2108-40SG-P	Knob	57
2109-4GPH-P	96mm	57
2110-4GPH-P	128mm	57
2111-4GPH-P	160mm	57
2112-4GPH-P	256mm	57
2113-4GPH-P	320mm	57
2114-4GPH-P	18in.	57
2115-4GPH-P	Knob	57
2116-4055-P	96mm	57
2117-4055-P	128mm	57
2118-4055-P	160mm	57
2119-4055-P	256mm	57
2120-4055-P	320mm	57
2121-4055-P	18in.	57
2122-4055-P	Knob	57
2123-4026-P	96mm	57
2124-4026-P	128mm	57

Part No.	CC/Type	Page No.
2125-4026-P	160mm	57
2126-4026-P	256mm	57
2127-4026-P	320mm	57
2128-4026-P	18in.	57
2129-4026-P	Knob	57
2130-1MDB-P	96mm	17
2131-1MDB-P	128mm	17
2132-1MDB-P	160mm	17
2133-1MDB-P	12in.	17
2134-1MDB-P	18in.	17
2135-1MDB-P	Knob	17
2136-1055-P	96mm	17
2137-1055-P	128mm	17
2138-1055-P	160mm	17
2139-1055-P	12in.	17
2140-1055-P	18in.	17
2141-1055-P	Knob	17
2142-10BC-P	96mm	17
2143-10BC-P	128mm	17
2144-10BC-P	160mm	17
2145-10BC-P	12in.	17
2146-10BC-P	Knob	17
2147-1026-P	18in.	17
2148-1BPN-P	18in.	17
2149-10BT-P	18in.	17
2150-10VB-P	18in.	17
2151-1MDB-P	3in.	91
2152-1MDB-P	96mm	91
2153-1MDB-P	128mm	91
2154-1MDB-P	160mm	91
2155-1MDB-P	6in.	91
2156-1MDB-P	12in.	91
2157-1MDB-P	18in.	91
2158-1MDB-P	Knob	91
2159-1VTN-P	3in.	91
2160-1VTN-P	96mm	91
2161-1VTN-P	128mm	91
2162-1VTN-P	160mm	91
2163-1VTN-P	6in.	91
2164-1VTN-P	12in.	91
2165-1VTN-P	18in.	91
2166-1VTN-P	Knob	91
2167-10VB-P	18in.	91
2168-1BPN-P	18in.	91
2169-1055-P	18in.	91
2172-1BPN-P	Knob	57
2173-10SG-P	Knob	57
2174-1GPH-P	Knob	57
2175-1055-P	Knob	57
2176-1026-P	Knob	57

Part No.	CC/Type	Page No.
2177-10VB-P	Knob	57
2236-1DC-P	3in.	116
2237-1DC-P	Knob	116
2273-40SG-P	96mm	37
2274-40SG-P	128mm	37
2275-40SG-P	160mm	37
2276-40SG-P	256mm	37
2277-40SG-P	320mm	37
2278-40SG-P	448mm	37
2279-40SG-P	Knob	37
2280-4GPH-P	96mm	37
2281-4GPH-P	128mm	37
2282-4GPH-P	160mm	37
2283-4GPH-P	256mm	37
2284-4GPH-P	320mm	37
2285-4GPH-P	448mm	37
2286-4GPH-P	Knob	37
2287-4055-P	96mm	37
2288-4055-P	128mm	37
2289-4055-P	160mm	37
2290-4055-P	256mm	37
2291-4055-P	320mm	37
2292-4055-P	448mm	37
2293-4055-P	Knob	37
2294-4026-P	96mm	37
2295-4026-P	128mm	37
2296-4026-P	160mm	37
2297-4026-P	256mm	37
2298-4026-P	320mm	37
2299-4026-P	448mm	37
2300-4026-P	Knob	37
2301-40VB-P	448mm	37
2302-4BPN-P	448mm	37
2303-40VB-P	128mm	37
2304-4BPN-P	160mm	37
2305-40VB-P	160mm	37
2306-4BPN-P	256mm	37
2307-40VB-P	256mm	37
2308-4BPN-P	320mm	37
2309-40VB-P	320mm	37
2310-1BPN-P	Knob	37
2311-10VB-P	Knob	37
2312-1BPN-P	128mm	75
2313-1026-P	128mm	75
2314-1098-P	128mm	75
2315-1BPN-P	160mm	75
2316-1026-P	160mm	75
2317-1098-P	160mm	75
2318-1BPN-P	224mm	75
2319-1026-P	224mm	75

Part No.	CC/Type	Page No.
2320-1098-P	224mm	75
2321-1BPN-P	320mm	75
2322-1026-P	320mm	75
2323-1098-P	320mm	75
2324-1BPN-P	Knob	75
2325-1026-P	Knob	75
2326-1098-P	Knob	75
2327-1BPN-P	96mm	99
2328-10VB-P	96mm	99
2329-1BPN-P	128mm	99
2330-10VB-P	128mm	99
2331-1BPN-P	160mm	99
2332-10VB-P	160mm	99
2333-1BPN-P	224mm	99
2334-10VB-P	224mm	99
2335-1BPN-P	12in.	99
2336-10VB-P	12in.	99
2337-1BPN-P	Knob	99
2338-10VB-P	Knob	99
2339-1BPN-P	96mm	31
2340-10VB-P	96mm	31
2341-1014-P	96mm	31
2342-1MDB-P	96mm	31
2343-1BPN-P	128mm	31
2344-10VB-P	128mm	31
2346-1014-P	128mm	31
2347-1MDB-P	128mm	31
2348-1BPN-P	160mm	31
2349-10VB-P	160mm	31
2350-1014-P	160mm	31
2351-1MDB-P	160mm	31
2352-1BPN-P	224mm	31
2353-10VB-P	224mm	31
2354-1014-P	224mm	31
2355-1MDB-P	224mm	31
2356-1BPN-P	320mm	31
2357-10VB-P	320mm	31
2358-1014-P	320mm	31
2359-1MDB-P	320mm	31
2360-1BPN-P	Knob	31
2361-10VB-P	Knob	31
2362-1014-P	Knob	31
2363-1MDB-P	Knob	31
2364-1MDB-P	128mm	75
2365-1MDB-P	160mm	75
2366-1MDB-P	224mm	75
2367-1MDB-P	320mm	75
2368-1MDB-P	Knob	75
2369-1VTN-P	96mm	99
2370-1VTN-P	128mm	99

Part No.	CC/Type	Page No.
2371-1VTN-P	160mm	99
2372-1VTN-P	224mm	99
2373-1VTN-P	12in.	99
2374-1VTN-P	Knob	99
2385-1098-P	96mm	75
2386-1BPN-P	96mm	75
2387-1MDB-P	96mm	75
2388-1026-P	96mm	75
2389-1SLT-P	Knob	75
2390-1SLT-P	96mm	75
2391-1SLT-P	128mm	75
2392-1SLT-P	160mm	75
2393-1SLT-P	224mm	75
2394-1055-P	Knob	75
2395-1055-P	96mm	75
2396-1055-P	128mm	75
2397-1055-P	160mm	75
2398-1055-P	224mm	75
2399-1055-P	Knob	31
2400-1055-P	96mm	31
2401-1055-P	128mm	31
2402-1055-P	160mm	31
2403-1SLT-P	Knob	31
2404-1SLT-P	96mm	31
2405-1SLT-P	128mm	31
2406-1SLT-P	160mm	31
2794-226-P	96mm	116
2795-2BPN-P	96mm	116
2880-539-P	Knob	116
2920-1BPN-P	Knob	85
2921-1BBN-P	Knob	85
2923-1BAC-P	Knob	85
2924-1BAP-P	Knob	85
2927-155-P	Knob	85
2928-1FE-P	Knob	85
2930-1BPN-P	96mm	85
2931-1BBN-P	96mm	85
2933-1BAC-P	96mm	85
2934-1BAP-P	96mm	85
2937-155-P	96mm	85
2938-1FE-P	96mm	85
2940-1TN-C	128mm	116
2942-1DAB-C	128mm	117
2943-1BPN-C	128mm	117
2949-1TN-C	64mm	117
2953-1BPN-C	64mm	117
2954-1TN-C	Knob	117
2957-1DAB-C	Knob	117
2959-1ALU-C	128mm	117
2960-1BPN-C	128mm	117

Part No.	CC/Type	Page No.
2961-126-C	192mm	117
2962-1BPN-C	192mm	117
2963-1ALU-C	160mm	117
2964-1BPN-C	160mm	117
2965-126-C	160mm	118
2966-1ALU-C	192mm	118
2967-1BPN-C	192mm	118
2970-126-C	128mm	118
2971-1ALU-C	192mm	118
2972-126-C	192mm	118
2973-1RN-C	64mm	107
2974-1RC-C	64mm	107
2975-1RI-C	64mm	107
2976-1RN-C	Knob	107
2977-1RC-C	Knob	107
2978-1RI-C	Knob	107
2979-1RN-C	96mm	107
2980-1RC-C	96mm	107
2981-1RI-C	96mm	107
2982-1RN-C	Knob	107
2983-1RC-C	Knob	107
2984-1RI-C	Knob	107
2985-1RN-C	96mm	107
2986-1RC-C	96mm	107
2987-1RI-C	96mm	107
3008-1DBZ-P	128mm	81
3009-1DBZ-P	64mm	81
3011-1AP-P	128mm	81
3012-1AP-P	64mm	81
3014-1BPN-P	96mm	81
3017-155-P	128mm	118
3030-1BPN-P	96mm	118
3040-155-P	128mm	111
3041-1LWI-P	128mm	111
3042-1WN-P	128mm	111
3043-155-P	96mm	111
3044-1LWI-P	96mm	111
3045-1WN-P	96mm	111
3046-155-P	Knob	111
3047-1LWI-P	Knob	111
3048-1WN-P	Knob	111
3049-155-P	Knob	111
3050-1LWI-P	Knob	111
3051-1WN-P	Knob	111
3052-155-P	Knob	111
3053-1LWI-P	Knob	111
3054-1WN-P	Knob	111
3055-155-P	Knob	111
3057-1WN-P	Knob	111
3460-630-B	Knob	118

Part No.	CC/Type	Page No.
4001-1VTN-P	3in.	19
4002-1055-P	3in.	19
4003-10VB-P	3in.	19
4004-1VTN-P	160mm	19
4005-1055-P	160mm	19
4006-10VB-P	160mm	19
4007-1VTN-P	Knob	19
4008-1055-P	Knob	19
4009-10VB-P	Knob	19
4011-10VB-P	96mm	106
4012-1VTN-P	96mm	106
4014-10VB-P	128mm	106
4015-1VTN-P	128mm	106
4017-10VB-P	Knob	106
4018-1VTN-P	Knob	106
4055-1ORB-P	Knob	118
4056-1BPN-P	96mm	27
4057-10VB-P	96mm	27
4058-10WN-P	96mm	27
4060-1ORB-P	96mm	27
4061-1BPN-P	Knob	27
4062-10VB-P	Knob	27
4063-10VB-P	3in.	91
4064-1BPN-P	3in.	91
4065-10WN-P	Knob	27
4067-1WVB-P	3in.	91
4068-1055-P	3in.	91
4069-10VB-P	96mm	91
4070-1BPN-P	96mm	91
4071-1ORB-P	Knob	27
4072-1BPN-P	96mm	61
4073-1WVB-P	96mm	91
4074-1055-P	96mm	91
4075-10VB-P	6in.	91
4076-1BPN-P	6in.	91
4077-1BPN-P	128mm	61
4079-1WVB-P	6in.	91
4080-1055-P	6in.	91
4081-10VB-P	Knob	91
4083-1BPN-P	Knob	91
4084-1026-P	96mm	61
4085-1WVB-P	Knob	91
4086-1055-P	Knob	91
4087-1026-P	128mm	61
4088-1BPN-P	Knob	61
4090-1026-P	Knob	61
4107-1014-P	96mm	27
4108-1BPN-P	96mm	65
4109-1026-P	96mm	65
4110-1014-P	Knob	27

Part No.	CC/Type	Page No.
4111-1055-P	96mm	65
4113-1BPN-P	128mm	65
4114-1026-P	128mm	65
4116-1055-P	128mm	65
4118-1BPN-P	160mm	65
4119-1026-P	160mm	65
4121-1055-P	160mm	65
4122-1BPN-P	Knob	65
4124-1026-P	Knob	65
4126-1055-P	Knob	65
4130-1VTN-P	96mm	19
4131-1055-P	96mm	19
4132-10VB-P	96mm	19
4134-10VB-P	3in. and 3 1/2in.	106
4135-1VTN-P	3in. and 3 1/2in.	106
4139-1014-P	3in.	23
4140-1014-P	96mm	23
4141-1014-P	6in.	23
4142-1014-P	Knob	23
4143-1014-P	Knob	23
4144-1014-P	96mm	23
4145-1014-P	Knob	23
4146-1014-P	3in.	23
4147-1014-P	4in.	23
4148-1014-P	3in.	23
4149-1014-P	6in.	23
4150-1014-P	Knob	23
4152-1014-P	Knob	23
4153-1014-P	96mm	23
4154-1014-P	18in.	23
4180-10PC-P	96mm	65
4181-10PC-P	128mm	65
4182-10PC-P	160mm	65
4183-10PC-P	224mm	65
4184-10PC-P	320mm	65
4185-10PC-P	Knob	65
4997-3BBN-P	Knob	118
4998-302-P	4in.	118
5006-3BBN-P	Knob	119
5148-14-P	7/8in.	119
5149-VB-P	7/8in.	119
5150-BPN-P	7/8in.	119
6691-107-B	Recess Pull	119
6692-126-B	Recess Pull	119
6932-115-P	96mm	119
7001-1BPN-P	96mm	48
7002-126-C	96mm	48
7004-1BBZ-C	96mm	48
7006-1BPN-P	Knob	48
7007-126-C	Knob	48

Part No.	CC/Type	Page No.
7009-1BBZ-C	Knob	48
7011-1BPN-C	Knob	48
7012-126-C	Knob	48
7014-1BBZ-C	Knob	48
7016-1BPN-P	96mm	48
7017-126-C	96mm	48
7018-155-C	96mm	48
7021-1BPN-P	Knob	48
7022-126-C	Knob	48
7023-155-C	Knob	48
7031-907-C	Knob	119
7032-926-C	Knob	119
7038-926-C	Knob	119
7041-907-C	Knob	119
7042-926-C	Knob	119
7066-1BPN-C	96mm	120
7067-9SS-C	672mm	70
7068-9SS-C	128mm	70
7069-9SS-C	160mm	70
7070-9SS-C	224mm	70
7071-9SS-C	288mm	70
7072-9SS-C	384mm	70
7073-9SS-C	448mm	70
7074-9SS-C	96mm	70
7075-9SS-C	96mm	70
7076-9SS-C	128mm	70
7077-9SS-C	288mm	70
7078-9SS-C	Knob	70
7079-9SS-C	Knob	70
7081-1BPN-P	96mm	84
7082-1BT-P	96mm	84
7084-1BPN-C	128mm	84
7085-1BT-P	128mm	84
7087-1BPN-P	Knob	84
7090-1BPN-C	Knob	84
7093-1BPN-P	Knob	84
7094-1BT-P	Knob	84
7096-1BPN-P	Knob	84
7100-115-C	128mm	120
7105-1RN-C	128mm	109
7108-1RBN-C	128mm	109
7109-1BPN-C	96mm	109
7110-1RN-C	96mm	109
7112-1RC-C	96mm	109
7113-1RBN-C	96mm	109
7114-1BPN-C	Knob	109
7115-1RN-C	Knob	109
7117-1RC-C	Knob	109
7118-1RBN-C	Knob	109
7119-1BPN-P	96mm	112

Part No.	CC/Type	Page No.
7120-1RAB-C	96mm	112
7121-1RN-C	96mm	112
7122-1RI-C	96mm	112
7123-1RC-C	96mm	112
7124-1RBN-C	96mm	112
7125-1BPN-C	Knob	112
7126-1RAB-C	Knob	112
7128-1RI-C	Knob	112
7129-1RC-C	Knob	112
7130-1RBN-C	Knob	112
7131-1015-C	96mm	49
7132-10RT-C	96mm	49
7133-1010-C	96mm	49
7134-10VB-P	96mm	49
7135-1015-C	128mm	49
7136-10RT-C	128mm	49
7137-1010-C	128mm	49
7138-10VB-P	128mm	49
7139-1015-C	Knob	49
7140-10RT-C	Knob	49
7141-1010-C	Knob	49
7142-10VB-P	Knob	49
7143-1015-C	Knob	49
7144-10RT-C	Knob	49
7145-1010-C	Knob	49
7146-10VB-P	Knob	49
7147-1015-C	96mm	39
7148-10RT-C	96mm	39
7149-1010-C	96mm	39
7150-10VB-P	96mm	39
7151-1015-C	128mm	39
7152-10RT-C	128mm	39
7153-1010-C	128mm	39
7154-10VB-P	128mm	39
7155-1015-C	416mm	120
7156-10RT-C	416mm	120
7157-1010-C	416mm	120
7158-10VB-C	416mm	120
7170-1015-C	Knob	39
7171-10RT-C	Knob	39
7172-1010-C	Knob	39
7173-10VB-P	Knob	39
7174-1015-C	96mm	93
7175-10RT-C	96mm	93
7176-1010-C	96mm	93
7177-10VB-P	96mm	93
7178-1015-C	128mm	93
7179-10RT-C	128mm	93
7180-1010-C	128mm	93
7181-10VB-P	128mm	93

Part No.	CC/Type	Page No.
7182-1015-C	Knob	93
7183-10RT-C	Knob	93
7184-1010-C	Knob	93
7185-10VB-P	Knob	93
7315-303-P	Knob	120
7317-303-B	Knob	120
7870-2ORB-P	128mm	120
7871-2ORB-P	Knob	120
7873-2ORB-P	Knob	120
7874-1ORB-P	3in.	120
7875-1ORB-P	3in.	121
7876-1VB-P	3in.	101
7877-1ORB-P	Knob	121
7878-1VB-P	Knob	101
7879-1ORB-P	Knob	121
7880-1ORB-P	3in.	121
7881-1BPN-P	128mm	81
7883-1VB-P	128mm	101
7884-1BPN-P	64mm	81
7886-1VB-P	64mm	101
7888-1AP-P	96mm	81
7889-1DBZ-P	96mm	81
7890-1VB-P	96mm	101
7891-1BPN-P	Knob	81
7893-1AP-P	Knob	81
7894-1DBZ-P	Knob	81
7895-1VB-P	Knob	101
7896-1ORB-P	Knob	121
7897-1VB-P	Knob	101
7898-1VB-P	3in.	101
7899-1VB-P	Knob	101
7900-1VB-P	3in.	101
7901-1VB-P	3in.	101
7904-1VB-P	128mm	101
7905-1VB-P	96mm	101
7906-1VB-P	Knob	101
7907-1ORB-P	3in.	121
7908-1ORB-P	Knob	121
7909-1ORB-P	Knob	121
7910-1ORB-P	96mm	121
8010-03-P	Hook	95
8011-26-P	Hook	95
8012-BPN-P	Hook	95
8013-WN-P	Hook	95
8014-55-P	Hook	95
8015-ORB-P	Hook	95
8016-VB-P	Hook	95
8017-LWI-P	Hook	95
8089-155-P	Knob	48
8237-1BPN-P	6in.	113

Part No.	CC/Type	Page No.
8238-1VB-P	6in.	113
8239-1ORB-P	6in.	113
8240-1WN-P	6in.	113
8241-1RI-P	6in.	121
8243-1BPN-P	3in.	113
8244-1VB-P	3in.	113
8245-1ORB-P	3in.	113
8246-1WN-P	3in.	113
8249-1BPN-P	Knob	113
8250-1VB-P	Knob	113
8251-1ORB-P	Knob	113
8252-1WN-P	Knob	113
8253-1RI-P	Knob	121
8255-1BPN-P	Knob	113
8256-1VB-P	Knob	113
8257-1ORB-P	Knob	113
8258-1WN-P	Knob	113
8259-1RI-P	Knob	121
8266-1RGZ-P	6in.	122
8267-1BPN-P	6in.	35
8268-1VB-P	6in.	35
8269-1ORB-P	6in.	35
8270-1WN-P	6in.	35
8272-1RGZ-P	4in.	122
8273-1BPN-P	4in.	35
8274-1VB-P	4in.	35
8276-1WN-P	4in.	35
8279-1BPN-P	Knob	35
8280-1VB-P	Knob	35
8281-1ORB-P	Knob	35
8282-1WN-P	Knob	35
8285-1BPN-P	Knob	35
8286-1VB-P	Knob	35
8287-1ORB-P	Knob	35
8288-1WN-P	Knob	35
8291-1BPN-P	18in.	122
8292-1VB-P	18in.	122
8293-1ORB-P	18in.	122
8294-1WN-P	18in.	122
8297-1BPN-P	18in.	35
8298-1VB-P	18in.	35
8299-1ORB-P	18in.	35
8300-1WN-P	18in.	35
9079-1BPN-P	Knob	79
9200-1BPN-P	3in. and 96mm	69
9201-1026-P	3in. and 96mm	69
9202-1055-P	3in. and 96mm	69
9203-1BPN-P	160mm	69
9204-1026-P	160mm	69
9205-1055-P	160mm	69

Part No.	CC/Type	Page No.
9206-1BPN-P	224mm	69
9207-1026-P	224mm	69
9208-1055-P	224mm	69
9209-1BPN-P	Knob	69
9210-1026-P	Knob	69
9211-1055-P	Knob	69
9212-10VB-P	96mm	108
9213-1VTN-P	96mm	108
9214-1BPN-P	96mm	108
9215-10VB-P	160mm	108
9216-1VTN-P	160mm	108
9217-1BPN-P	160mm	108
9218-10VB-P	Knob	108
9219-1VTN-P	Knob	108
9220-1BPN-P	Knob	108
9221-1ORB-P	3in.	83
9222-1BPN-P	3in.	83
9223-10VB-P	3in.	83
9224-1ORB-P	96mm	83
9225-1BPN-P	96mm	83
9226-10VB-P	96mm	83
9227-1ORB-P	Knob	83
9228-1BPN-P	Knob	83
9229-10VB-P	Knob	83
9230-1026-P	96mm	17
9231-1BPN-P	96mm	17
9232-10BT-P	96mm	17
9233-1026-P	128mm	17
9234-1BPN-P	128mm	17
9235-10BT-P	128mm	17
9236-1026-P	160mm	17
9237-1BPN-P	160mm	17
9238-10BT-P	160mm	17
9239-1026-P	12in.	17
9240-1BPN-P	12in.	17
9241-10BT-P	12in.	17
9242-1026-P	Knob	17
9243-1BPN-P	Knob	17
9244-10BT-P	Knob	17
9245-1ORB-P	96mm	38
9246-1BPN-P	96mm	38
9247-10BT-P	96mm	38
9248-1ORB-P	128mm	38
9249-1BPN-P	128mm	38
9250-10BT-P	128mm	38
9251-1ORB-P	160mm	38
9252-1BPN-P	160mm	38
9253-10BT-P	160mm	38
9254-1ORB-P	Knob	38
9255-1BPN-P	Knob	38

Part No.	CC/Type	Page No.
9256-10BT-P	Knob	38
9257-1014-P	3in.	83
9258-1014-P	96mm	83
9259-1014-P	Knob	83
9260-1055-P	3in.	83
9261-1055-P	96mm	83
9262-1055-P	Knob	83
9436-10WN-P	3in.	87
9437-10VB-P	3in.	87
9438-1BPN-P	3in.	87
9439-1055-P	96mm	60
9440-1055-P	128mm	60
9441-1055-P	Knob	60
9442-10WN-P	96mm	87
9443-10VB-P	96mm	87
9444-1BPN-P	96mm	87
9448-10WN-P	128mm	87
9449-10VB-P	128mm	87
9450-1BPN-P	128mm	87
9454-10WN-P	160mm	87
9455-10VB-P	160mm	87
9456-1BPN-P	160mm	87
9460-10WN-P	Knob	87
9461-10VB-P	Knob	87
9462-1BPN-P	Knob	87
9475-1026-P	96mm	60
9476-1BPN-P	96mm	60
9477-1026-P	128mm	60
9478-1BPN-P	128mm	60
9479-1026-P	Knob	60
9480-1BPN-P	Knob	60
9481-1BPN-P	96mm	110
9482-10VB-P	96mm	110
9483-10BT-P	96mm	110
9484-1BPN-P	128mm	110
9485-10VB-P	128mm	110
9486-10BT-P	128mm	110
9487-1BPN-P	3in.	110
9488-10VB-P	3in.	110
9489-10BT-P	3in.	110
9490-1BPN-P	Knob	110
9491-10VB-P	Knob	110
9492-10BT-P	Knob	110
9500-326-P	4in.	122
9562-1BPN-P	160mm	27
9564-1BPN-P	224mm	27
9565-1ORB-P	160mm	27
9566-1ORB-P	224mm	27
9567-1014-P	160mm	27
9568-1014-P	224mm	27

Part No.	CC/Type	Page No.
9569-10VB-P	160mm	27
9572-1014-P	96mm	110
9573-1014-P	128mm	110
9574-1014-P	3in.	110
9575-1014-P	Knob	110
9576-1VTN-P	3in.	87
9577-1VTN-P	96mm	87
9578-1VTN-P	128mm	87
9579-1VTN-P	160mm	87
9580-1VTN-P	Knob	87
9704-126-P	96mm	122
9704-198-P	96mm	122
9704-199-P	96mm	122
9710-1BPN-P	64mm	33
9711-1BAC-P	64mm	33
9712-1BBN-P	64mm	33
9713-1BAB-P	64mm	33
9714-1MDB-P	Knob	122
9718-1BPN-P	96mm	33
9719-1BAC-P	96mm	33
9720-1BBN-P	96mm	33
9721-1BAB-P	96mm	33
9722-1BAC-P	Knob	33
9723-1BBN-P	Knob	33
9724-1BAB-P	Knob	33
9805-10VB-P	224mm	27
9806-1VTN-P	96mm	27
9807-1VTN-P	160mm	27
9808-1VTN-P	224mm	27
9809-1VTN-P	Knob	27
9810-10WN-P	160mm	27
9811-10WN-P	224mm	27
9812-1BPN-P	160mm	61
9813-1BPN-P	224mm	61
9814-1MDB-P	96mm	61
9815-1MDB-P	128mm	61
9816-1MDB-P	160mm	61
9817-1MDB-P	224mm	61
9818-1MDB-P	Knob	61
9819-1026-P	160mm	61
9820-1026-P	224mm	61

Notes

Part No.	CC/Type	Page No.
9821-1VTN-P	96mm	61
9822-1VTN-P	128mm	61
9823-1VTN-P	160mm	61
9824-1VTN-P	224mm	61
9827-1VTN-P	Knob	61
9828-1BPN-P	224mm	65
9857-1BPN-P	320mm	65
9858-1055-P	224mm	65
9859-1055-P	320mm	65
9860-1BPN-P	18in.	65
9861-1055-P	18in.	65
9885-110-P	3in.	79
9886-1BPN-P	3in.	79
9887-1FE-P	3in.	79
9888-1WN-P	3in.	79
9889-1WC-P	3in.	79
9890-110-P	3in.	79
9892-1FE-P	3in.	79
9893-1WC-P	3in.	79
9895-1WN-P	3in.	79
9896-1BPN-P	3in.	79
9897-1MDB-P	96mm	65
9898-1MDB-P	128mm	65
9899-1MDB-P	160mm	65
9901-1MDB-P	224mm	65
9902-1MDB-P	320mm	65
9903-1MDB-P	Knob	65
9904-1026-P	224mm	65
9905-1026-P	320mm	65
9906-1SLT-P	96mm	65
9907-1SLT-P	128mm	65
9908-1SLT-P	160mm	65
9909-1SLT-P	224mm	65
9912-1MDB-P	18in.	65
9913-1BPN-P	Knob	33
9916-1026-P	18in.	65
9923-110-P	Knob	79
9924-1BPN-P	Knob	79
9925-1WC-P	Knob	79
9927-1WN-P	Knob	79

Part No.	CC/Type	Page No.
9933-110-P	Knob	79
9934-1FE-P	Knob	79
9935-1WC-P	Knob	79
9936-1WN-P	Knob	79
9937-1BPN-P	Knob	79
9938-110-P	Knob	79
9941-1WC-P	Knob	79
9942-1WN-P	Knob	79
9946-1MDB-P	3in.	122
9947-1055-P	3in.	123
9950-103-P	Knob	123
9951-126-P	Knob	123
9952-198-P	Knob	123
9955-1SB-P	Knob	123
9956-1BPN-P	Knob	123
9958-1SC-P	Knob	123
9960-2AP-P	4in.	123
9961-2AP-P	128mm	123
9962-2AP-P	192mm	123
9966-2AP-P	Knob	123
9967-2AP-P	Knob	123
9970-1SLT-P	320mm	65
9971-1SLT-P	Knob	65
9973-1SLT-P	18in.	65
9974-1BPN-P	320mm	69
9975-1055-P	320mm	69
9976-1MDB-P	3in. and 96mm	69
9977-1MDB-P	160mm	69
9978-1MDB-P	224mm	69
9980-255-P	4in.	124
9984-255-P	Knob	124
9986-255-P	Knob	124
9989-255-P	96mm	124
9991-255-P	192mm	124
9993-1MDB-P	320mm	69
9995-1MDB-P	Knob	69



2495 Main Street, Suite 111 Buffalo, NY 14214-2152

Phone: 800.333.0578 | Fax: 716.833.2402

Email: Info@BerensonHardware.com

www.BerensonHardware.com



Look for Berenson Corp on Facebook, Houzz, Instagram, LinkedIn, Pinterest, Twitter, and YouTube

© 2021 Berenson Corp

21.01
0515-MARK-01