

## Stainless Steel Bar Pull Series

**SS** Material: Stainless Steel



EPBP030SS  
3" c/c  
Standard Bar Pull  
Stainless Steel



EPBP010SS  
2-3/8" Length  
T-Knob  
Stainless Steel



EPBP096SS  
96mm c/c  
Standard Bar Pull  
Stainless Steel



EPBP128SS  
128mm c/c  
Large Bar Pull  
Stainless Steel



EPBP192SS  
192mm c/c  
Large Bar Pull  
Stainless Steel



EPBP256SS  
256mm c/c  
Large Bar Pull  
Stainless Steel



EPBP320SS  
320mm c/c  
Large Bar Pull  
Stainless Steel



EPBP416SS  
416mm c/c  
Large Bar Pull  
Stainless Steel



EPBP480SS  
480mm c/c  
Large Bar Pull  
Stainless Steel



EPBP544SS  
544mm c/c  
Large Bar Pull  
Stainless Steel



EPBP640SS  
640mm c/c  
Large Bar Pull  
Stainless Steel

## Steel Bar Pull Series

**STL** Material: Steel



EPBP030SN  
3" c/c  
Bar Pull  
Satin Nickel



EPBP096SN  
96mm c/c,  
Bar Pull  
Satin Nickel



EPBP128SN  
128mm c/c,  
Large Bar Pull  
Satin Nickel



EPBP192SN  
192mm c/c,  
Large Bar Pull  
Satin Nickel

## 304 Stainless Steel Wire Pull, ADA Compliant Series

**SS** Material: Stainless Steel



EPMC427-A  
4" c/c,  
Projection 1-7/8"  
Wire Pull  
Satin Clear  
Anodized Aluminum



EPMC400-SS  
5" c/c,  
Projection 2-13/16"  
Wire Pull  
Stainless Steel



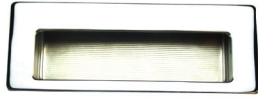
EPMC428-A  
5" c/c,  
Projection 3"  
Wire Pull  
Satin Clear  
Anodized Aluminum

Note: Available any quantity.

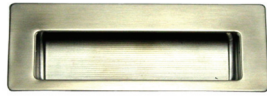
# 304 Stainless Steel Recessed Pull Series



**SS** Material: Stainless Steel



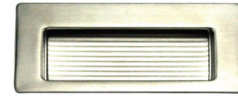
EPDP4115-PC  
36mmH x 85mmW, Mounting Hole:  
30mmH x 67mmW x 9mmD  
Recessed Pull  
Polished Chrome



EPDP4115-SS  
36mmH x 85mmW, Mounting Hole:  
30mmH x 67mmW x 9mmD  
Recessed Pull  
Stainless Steel



EPDP485-PC  
42mmH x 115mmW, Mounting Hole:  
34mmH x 93mmW x 14mmD  
Recessed Pull  
Polished Chrome



EPDP485-SS  
42mmH x 115mmW, Mounting Hole:  
34mmH x 93mmW x 14mmD  
Recessed Pull  
Stainless Steel

# Flush Drawer Pull Series



**KNAPE & VOGT**

**B** Material: Brass



KV819XPB  
1-3/4" x 3-1/4" x 9/16"  
Deep with Bevel Edges  
Drawer Pull, Polished Brass



KV819XANO  
1-3/4" x 3-1/4" x 9/16"  
Deep with Bevel Edges  
Drawer Pull, Anachrome



KV819XBR  
1-3/4" x 3-1/4" x 9/16"  
Deep with Bevel Edges  
Drawer Pull, Dull Brass

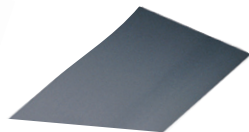
# Aluminum Architectural Pull Series



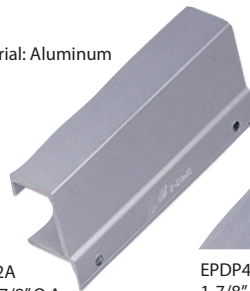
**A** Material: Aluminum



EPDP40A  
1-7/8" c/c, 3-7/8" O.A.  
Satin Clear Anodized  
Aluminum



EPDP40LA  
No Holes, 6" O.A.  
Satin Clear Anodized  
Aluminum



EPDP412A  
3" c/c, 3-7/8" O.A.  
Satin Clear Anodized  
Aluminum



EPDP414A  
1-7/8" c/c, 3-7/8" O.A.  
Satin Clear Anodized  
Aluminum



EPDP41B  
1" c/c, 1-1/2" O.A.  
Satin Brass Anodized  
Aluminum



EPDP41W  
1" c/c, 1-1/2" O.A.  
Gloss White  
Powdercoat Aluminum



EPDP42A  
No Holes, 1-1/2" O.A.  
Satin Clear Anodized  
Aluminum



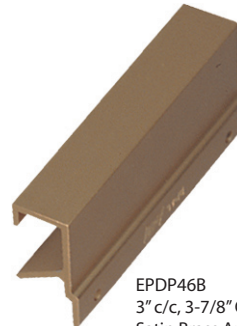
EPDP42B  
No Holes, 1-1/2" O.A.  
Satin Brass Anodized  
Aluminum



EPDP42BL  
No Holes, 1-1/2" O.A.  
Satin Black Anodized  
Aluminum



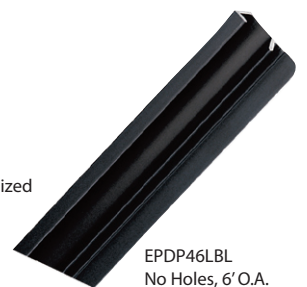
EPDP42PA  
No Holes, 1-1/2" O.A.  
Polished Anodized  
Aluminum



EPDP46B  
3" c/c, 3-7/8" O.A.  
Satin Brass Anodized  
Aluminum



EPDP46BL  
3" c/c, 3-7/8" O.A.  
Satin Black Anodized  
Aluminum



EPDP46LBL  
No Holes, 6" O.A.  
Satin Black Anodized  
Aluminum

Note: Available any quantity.